

## U.S. IMPORTERS' QUESTIONNAIRE CRYSTALLINE SILICON PHOTOVOLTAIC CELLS (WHETHER OR NOT PARTIALLY OR FULLY ASSEMBLED INTO OTHER PRODUCTS)

This questionnaire must be received by the Commission by **September 16, 2021**  
*See last page for filing instructions.*

The information called for in this questionnaire is for use by the United States International Trade Commission in connection with investigation No. TA-201-75 (Extension), Crystalline Silicon Photovoltaic ("CSPV") Cells (Whether or Not Partially or Fully Assembled Into Other Products) ("CSPV Products"), under section 204 of the Trade Act of 1974 (19 U.S.C. § 2254). The information requested in the questionnaire is needed to supplement data available to the Commission from other sources and is requested under the authority of section 204 of the Tariff Act of 1974. This report is **mandatory** and failure to reply as directed can result in a subpoena or other order to compel the submission of records or information in your possession (19 U.S.C. § 1333(a)).

Name of firm \_\_\_\_\_

Address \_\_\_\_\_

City \_\_\_\_\_ State \_\_\_\_\_ Zip Code \_\_\_\_\_

Website \_\_\_\_\_

Has your firm imported CSPV products as defined on the next four pages *from any country* at any time since January 1, 2018?

☐ **YES** (Complete all parts of the questionnaire, and return the entire questionnaire to the Commission)

☐ **NO** (Sign the certification below and promptly **return** only this page of the questionnaire to the Commission)

Return questionnaire via the Commission **Drop Box** by clicking on the following link:  
<https://dropbox.usitc.gov/oinv/>. (PIN: **CSPV**)

### CERTIFICATION

*I certify that the information herein supplied in response to this questionnaire is complete and correct to the best of my knowledge and belief and understand that the information submitted is subject to audit and verification by the Commission. By means of this certification I also grant consent for the Commission, and its employees and contract personnel, to use the information provided in this questionnaire and throughout this proceeding in any other import-injury proceedings, reviews, or general fact finding investigations conducted by the Commission on the same or similar merchandise.*

*I, the undersigned, acknowledge that information submitted in response to this request for information and throughout this proceeding or other proceedings may be disclosed to and used: (i) by the Commission, its employees and Offices, and contract personnel (a) for developing or maintaining the records of this or a related proceeding, or (b) in internal investigations, audits, reviews, and evaluations relating to the programs, personnel, and operations of the Commission including under 5 U.S.C. Appendix 3; or (ii) by U.S. government employees and contract personnel, solely for cybersecurity purposes. I understand that all contract personnel will sign appropriate nondisclosure agreements. I understand that the confidential business information that is furnished may be transmitted to the Office of the United States Trade Representative (USTR) and may be included in a confidential version of the report that the Commission transmits to the President and USTR for use in decision-making related to this proceeding.*

\_\_\_\_\_  
Name of Authorized Official

\_\_\_\_\_  
Title of Authorized Official  
Phone: \_\_\_\_\_

\_\_\_\_\_  
Date

\_\_\_\_\_  
Signature

\_\_\_\_\_  
Email address

**PART I.—GENERAL INFORMATION**

**Background.** On January 23, 2018, the President, pursuant to section 203 of the Trade Act of 1974, issued Proclamation 9693, imposing a safeguard measure on imports of CSPV products, in the form of (a) a tariff-rate quota on imports of CSPV (or “solar”) cells not partially or fully assembled into other products and (b) an increase in duties on imports of CSPV modules. The proclamation was published in the Federal Register on January 25, 2018 (83 Fed. Reg. 3541). The measure took effect on February 7, 2018, for a period of four years, or through February 6, 2022. Following receipt of petitions filed on behalf of Auxin Solar Inc. and Suniva, Inc., on August 2, 2021, and by Hanwha Q CELLS USA, Inc., LG Electronics USA, Inc., and Mission Solar Energy, on August 4, 2021, the Commission, effective August 6, 2021, instituted this investigation under section 204(c) of the Trade Act to determine whether action under section 203 of the Trade Act of 1974 with respect to imports of CSPV products continues to be necessary to prevent or remedy serious injury and whether there is evidence that the domestic CSPV products industry is making a positive adjustment to import competition. Questionnaires and other information pertinent to this proceeding are available at [https://usitc.gov/investigations/safeguard/2021/crystalline\\_silicon\\_photovoltaic\\_cells\\_whether\\_or/extension.htm](https://usitc.gov/investigations/safeguard/2021/crystalline_silicon_photovoltaic_cells_whether_or/extension.htm).

***Crystalline Silicon Photovoltaic (“CSPV”) Cells (Whether or Not Partially or Fully Assembled Into Other Products) (“CSPV products”).***--The articles covered by the investigation are crystalline silicon photovoltaic cells, whether or not partially or fully assembled into other products, including, but not limited to, modules, laminates, panels and building-integrated materials.

The investigation covers crystalline silicon photovoltaic cells of a thickness equal to or greater than 20 micrometers, having a p/n junction (or variant thereof) formed by any means, whether or not the cell has undergone other processing, including, but not limited to, cleaning, etching, coating, and/or addition of materials (including, but not limited to, metallization and conductor patterns) to collect and forward the electricity that is generated by the cell.

Included in the scope of the investigation are photovoltaic cells that contain crystalline silicon in addition to other photovoltaic materials. This includes, but is not limited to, passivated emitter rear contact (“PERC”) cells, heterojunction with intrinsic thin-layer (“HIT”) cells, and other so-called “hybrid” cells.

Articles under consideration may be described at the time of importation as components for final finished products that are assembled after importation, including, but not limited to, modules, laminates, panels, and building-integrated materials.

Excluded from the investigation are CSPV cells, whether or not partially or fully assembled into other products, if the CSPV cells were manufactured in the United States.

Also excluded from the investigation are thin film photovoltaic products produced from amorphous silicon (“a-Si”), cadmium telluride (“CdTe”), or copper indium gallium selenide (“CIGS”).

Also excluded from the scope of the investigation are CSPV cells, not exceeding 10,000mm<sup>2</sup> in surface area, that are permanently integrated into a consumer good whose function is other than power generation and that consumes the electricity generated by the integrated CSPV cell. Where more than one CSPV cell is permanently integrated into a consumer good, the surface area for purposes of this exclusion shall be the total combined surface area of all CSPV cells that are integrated into the consumer good.

For Customs purposes, the CSPV cells covered by the investigation are provided for under Harmonized Tariff Schedule of the United States (“HTSUS”) subheading 8541.40.60. Inverters or batteries with CSPV cells attached can be imported under HTSUS subheadings 8501.61.00 and 8507.20.80, respectively. In addition, CSPV cells covered by the investigation may also be classifiable as DC generators of subheadings 8501.31.80 and 8501.32.60, when such generators are imported with CSPV cells attached. While HTSUS provisions are provided for convenience, the written description of the scope is dispositive.<sup>1</sup>

**Product Exclusions.--**

Presidential Proclamation 9693 excluded the following “low wattage” products from application of the safeguard measure, which took effect on February 7, 2018 (83 Fed. Reg. 3541, January 25, 2018):

- 10 to 60 watt, inclusive, rectangular solar panels, where the panels have the following characteristics: (A) Length of 250 mm or more but not over 482 mm or width of 400 mm or more but not over 635 mm, and (B) surface area of 1000 cm<sup>2</sup> or more but not over 3,061 cm<sup>2</sup>, provided that no such panel with those characteristics shall contain an internal battery or external computer peripheral ports at the time of entry.
- 1 watt solar panels incorporated into nightlights that use rechargeable batteries and have the following dimensions: 58 mm or more but not over 64 mm by 126 mm or more but not over 140 mm.
- 2 watt solar panels incorporated into daylight dimmers that may use rechargeable batteries, such panels with the following dimensions: 75 mm or more but not over 82 mm by 139 mm or more but not over 143 mm.
- Off-grid and portable CSPV panels, whether in a foldable case or in rigid form containing a glass cover, where the panels have the following characteristics: (a) A total power output of 100 watts or less per panel; (b) a maximum surface area of 8,000 cm<sup>2</sup> per panel; (c) does not include a built-in inverter; and where the panels have glass covers, such panels must be in individual retail packaging (in this context, retail packaging typically includes graphics, the product name, its description and/or features, and foam for transport).
- 3.19 watt or less solar panels, each with length of 75 mm or more but not over 266 mm and width of 46 mm or more but not over 127 mm, with surface area of 338 cm<sup>2</sup> or less, with one black wire and one red wire (each of type 22 AWG or 24 AWG) not more than 206 mm in length when measured from panel edge, provided that no such panel shall contain an internal battery or external computer peripheral ports.
- 27.1 watt or less solar panels, each with surface area less than 3,000 cm<sup>2</sup> and coated across the entire surface with a polyurethane doming resin, the foregoing joined to a battery charging and maintaining unit, such unit which is an acrylonitrile butadiene styrene (ABS) box that incorporates a light emitting diode (LED) by coated wires that include a connector to permit the incorporation of an extension cable.

---

<sup>1</sup> CSPV products covered by the scope are currently subject to tariff-rate quotas under a safeguard measure imposed effective February 7, 2018, under subheadings 9903.45.21 and 9903.45.22 (CSPV cells) and 9903.45.25 (CSPV modules) and related legal notes.

The following additional CSPV products entered, or withdrawn from a warehouse for consumption, on or after 12:01 a.m., EST, on September 19, 2018 are also excluded from the safeguard measure (83 Fed. Reg. 47393, September 19, 2018):

- off-grid, 45 watt or less solar panels, each with length not exceeding 950 mm and width of 100 mm or more but not over 255 mm, with a surface area of 2,500 cm<sup>2</sup> or less, with a pressure-laminated tempered glass cover at the time of entry but not a frame, electrical cables or connectors, or an internal battery.
- 4 watt or less solar panels, each with a length or diameter of 70 mm or more but not over 235 mm, with a surface area not exceeding 539 cm<sup>2</sup>, and not exceeding 16 volts, provided that no such panel with these characteristics shall contain an internal battery or external computer peripheral ports at the time of entry.
- solar panels with a maximum rated power of equal to or less than 60 watts, having the following characteristics, provided that no such panel with those characteristics shall contain an internal battery or external computer peripheral ports at the time of entry: (A) Length of not more than 482 mm and width of not more than 635 mm or (B) a total surface area not exceeding 3,061 cm<sup>2</sup>.
- flexible and semi-flexible off-grid solar panels designed for use with motor vehicles and boats, where the panels range in rated wattage from 10 to 120 watts, inclusive.
- frameless solar panels in a color other than black or blue with a total power output of 90 watts or less where the panels have a uniform surface without visible solar cells or busbars.
- solar cells with a maximum rated power between 3.4 and 6.7 watts, inclusive, having the following characteristics: (A) A cell surface area between 154 cm<sup>2</sup> and 260 cm<sup>2</sup>, inclusive, (B) no visible busbars or gridlines on the front of the cell, and (C) more than 100 interdigitated fingers of tin-coated solid copper adhered to the back of the cell, with the copper portion of the metal fingers having a thickness of greater than 0.01 mm.
- solar panels with a maximum rated power between 320 and 500 watts, inclusive, having the following characteristics: (A) Length between 1,556 mm and 2,070 mm inclusive, and width between 1,014 mm and 1,075 mm, inclusive, (B) where the solar cells comprising the panel have no visible busbars or gridlines on the front of the cells, and (C) the solar cells comprising the panel have more than 100 interdigitated fingers of tin-coated solid copper adhered to the back of the cells, with the copper portion of the metal fingers having thickness greater than 0.01 mm.
- modules incorporating only CSPV cells that are products of the United States and not incorporating any CSPV cells that are the product of any other country.

The following additional CSPV products entered, or withdrawn from a warehouse for consumption, on or after 12:01 a.m., EST, on June 13, 2019 are also excluded from the safeguard measure (84 Fed. Reg. 27684, June 13, 2019):

- flexible fiberglass solar panels without glass components other than fiberglass, such panels having power outputs ranging from 250 to 900 watts.
- solar panels consisting of solar cells arranged in rows that are laminated in the panel and that are separated by more than 10 mm, with an optical film spanning the gaps between all rows that is designed to direct sunlight onto the solar cells, and not including panels that lack said optical film or only have a white or other backing layer that absorbs or scatters sunlight.

The following additional CSPV products were also excluded from the safeguard measure if entered, or withdrawn from a warehouse for consumption, on or after 12:01 a.m., EST, on June 13, 2019. Such CSPV products are not excluded from the safeguard measure if entered, or withdrawn from a warehouse for consumption, on or after 12:01 a.m., EST, on October 25, 2020. (84 Fed. Reg. 27684, June 13, 2019, and 85 Fed. Reg. 65639, October 16, 2020):

- bifacial solar panels that absorb light and generate electricity on each side of the panel and that consist of only bifacial solar cells that absorb light and generate electricity on each side of the cells.

**In this questionnaire submission please report merchandise that was covered by the Presidential proclamations on the safeguard measure, as well data for bifacial modules over the entire data collection period regardless of whether they were at certain times excluded from duties.**

**CSPV cell.**--A crystalline silicon photovoltaic ("CSPV") cell converts sunlight to electricity and is the basic element of a module. The investigation covers CSPV cells of a thickness equal to or greater than 20 micrometers, having a p/n junction (or variant thereof) formed by any means, whether or not the cell has undergone other processing, including, but not limited to, cleaning, etching, coating, and/or addition of materials (including, but not limited to, metallization and conductor patterns) to collect and forward the electricity that is generated by the cell. Included are photovoltaic cells that contain crystalline silicon in addition to other photovoltaic materials. This includes, but is not limited to, passivated emitter rear contact ("PERC") cells, heterojunction with intrinsic thin-layer ("HIT") cells, and other so-called "hybrid" cells.

**CSPV module.**--A joined group of CSPV cells, regardless of the number of cells or the shape of the joined group, that are capable of generating electricity. The term "**module**" is frequently used interchangeably with the term "**panel**." A "**laminated**" is a module that does not have a frame.

**CSPV products = CSPV cells + CSPV modules**

**Bifacial (modules and cells).**--Bifacial modules absorb light and generate electricity on each side of the module and consist of only bifacial cells that absorb light and generate electricity on each side of the cells.

**Importer.**--Any person or firm engaged, either directly or through a parent company or subsidiary, in importing CSPV cells and modules (as defined above) into the United States from a foreign manufacturer or through its selling agent.

**Reporting of information.**--If information is not readily available from your records in exactly the form requested, furnish carefully prepared estimates. If your firm is completing more than one questionnaire in connection with this proceeding (i.e., a producer, importer, and/or purchaser questionnaire), you need to respond only once to duplicated questions in the questionnaires.

**Confidentiality.**-- The commercial and financial data furnished in response to this questionnaire that reveal the individual operations of your firm will be treated as confidential by the Commission to the extent that such data are not otherwise available to the public and will not be disclosed except as may be required by law (see 19 CFR §§ 206.17(a)(1) and 206.52(c)). Such confidential information will not be published in a manner that will reveal the individual operations of your firm; however, general characterizations of numerical business proprietary information (such as discussion of trends) will be treated as confidential business information only at the request of the submitter for good cause shown.

**Verification.**--The information submitted in this questionnaire is subject to audit and verification by the Commission. To facilitate possible verification of data, please keep all of your files, worksheets, and

supporting documents used in the preparation of the questionnaire response. Please also retain a copy of the final document that you submit.

**Release of information.**--The information provided by your firm in response to this questionnaire, as well as any other confidential business information submitted by your firm to the Commission in connection with this proceeding, may become subject to, and released under, the administrative protective order provisions of the Trade Act of 1974 (19 U.S.C. § 2252(i)) and sections 206.17 and 206.52 of the Commission's Rules of Practice and Procedure (19 CFR §§ 206.17(a)(1) and 206.52(c)). This means that certain lawyers and other authorized individuals may temporarily be given access to the information for use in connection with this proceeding or other import-injury proceedings conducted by the Commission on the same or similar merchandise; those individuals would be subject to severe penalties if the information were divulged to unauthorized individuals.

**Valid number error messages.**--If you are completing this form in a country that uses periods (".") to delineate multiples of 1000 (e.g., one million would appear as \$1.000.000 rather than \$1,000,000), you may be unable to enter in numbers greater than 999 in numeric form fields. The solution to this data entry issue is to temporarily change your operating system's number formatting to be consistent with the U.S. number formatting system while you complete this form. Detailed instructions on how to resolve this issue are provided at the end of this questionnaire and are available upon request from **Jordan Harriman (202-205-2610, [jordan.harriman@usitc.gov](mailto:jordan.harriman@usitc.gov))**.

**D-GRIDS tool.**--The Commission has a tool that firms can use to move data from their own MS Excel compilation files into self-contained data tables within this MS Word questionnaire, thereby reducing the amount of cell-by-cell data entry that would be required to complete this form. This tool is a macro-enabled MS Excel file available for download from the Commission's generic questionnaires webpage ([https://www.usitc.gov/trade\\_remedy/question.htm](https://www.usitc.gov/trade_remedy/question.htm)) called the "D-GRIDS tool." Use of this tool to help your firm complete this questionnaire is optional. Firms opting to use the D-GRIDS tool to populate their data into this questionnaire will need the D-GRIDS specification sheet PDF file specific to this proceeding (available on the case page which is linked under the "Background" above) which includes the necessary references relating to this questionnaire, as well as the macro-enable MS Excel D-GRIDS tool itself from the generic questionnaires page. More detailed instructions on how to use the D-GRIDS tool are available within the D-GRIDS tool itself.

***Note.--If your answers to questions in Part I differ for CSPV cells or CSPV modules (or some other such breakout, e.g. bifacial CSPV products vs. all other CSPV products), then please explain. Additional explanations may be included in II-21.***

- I-1. **OMB statistics.**--Please report below the actual number of hours required and the cost to your firm of completing this questionnaire.

Hours	Dollars

Public reporting burden for this questionnaire is estimated to average 40 hours per response, including the time for reviewing instructions, gathering data, and completing and reviewing the questionnaire.

We welcome comments regarding the accuracy of this burden estimate, suggestions for reducing the burden, and any suggestions for improving this questionnaire. Please attach such comments to your response or send them to the Office of Investigations, USITC, 500 E St. SW, Washington, DC 20436.

- I-2a. **Establishments covered.**--Provide the name and address of establishment(s) covered by this questionnaire.

***“Establishment”*** – Each facility of a firm involved in the importation of CSPV products, including auxiliary facilities operated in conjunction with (whether or not physically separate from) such facilities.

--

- I-2b. **Stock symbol information.**-- If your firm or parent firm is publicly traded, please specify the stock exchange and trading symbol: \_\_\_\_.

- I-2c. **External counsel.**-- If your firm or parent firm is represented by external counsel in relation to this proceeding, please specify the name of the law firm and the lead attorney(s).

Law firm:	
Lead attorney(s):	

I-3. **Ownership.**--Is your firm owned, in whole or in part, by any other firm?

☐ No      ☐ Yes--List the following information, relating to the ultimate parent/owner.

<b>Firm name</b>	<b>Country</b>	<b>Extent of ownership (percent)</b>

I-4. **Related importers/exporters.**--Does your firm have any related firms, either domestic or foreign, that are engaged in importing CSPV products into the United States or that are engaged in exporting these items to the United States?

☐ No      ☐ Yes--List the following information.

<b>Firm name</b>	<b>Country</b>	<b>Affiliation</b>

I-5. **Related producers.**-- Does your firm have any related firms, either domestic or foreign, that are engaged in producing CSPV cells or assembling (fully or partially) CSPV cells into other products?

☐ No      ☐ Yes--List the following information.

<b>Firm name</b>	<b>Country</b>	<b>Affiliation</b>	<b>Production/processing activity performed</b>



- I-6. **Importing operations.**--Please indicate the nature of your firm's importing operations on CSPV products. More than one answer may be applicable.

Importer of record	Takes title to the imported product(s)	Consignee of the imported products(s)	Customs broker or freight forwarder
<input type="checkbox"/>	<input type="checkbox"/>	<input type="checkbox"/>	<input type="checkbox"/>

- I-7. **Consignees.**--If your firm is an importer of record of CSPV products but is not the consignee, please list the consignees below (firm name, address, telephone number, and individual to contact).

Firm name	Country	Contact person and phone number

- I-8. **FTZ, TIB, or bonded warehouses.**--Please indicate whether your firm enters CSPV products into, or withdraws such merchandise from, foreign trade zones or bonded warehouses. Also indicate whether your firm imports CSPV products under the TIB (temporary importation under bond) program.

**“Foreign trade zone”** is a designated location in the United States where firms utilize special procedures that allow delayed or reduced customs duty payments on foreign merchandise, as well as other savings. A foreign trade zone must be designed as such pursuant to the rules and procedures set forth in the Foreign-Trade Zones Act.

**“Bonded warehouse”** is a secured facility supervised by U.S. customs, where dutiable landed imports are stored pending their re-export, or release after payment of import duties, taxes, and other charges. A bonded warehouse must be designed as such pursuant to the rules and procedures set forth in 19 U.S.C. § 1555.

**“Temporary Importation under Bond (“TIB”) program”** is a procedure whereby imported merchandise may be entered under certain conditions for a limited time into the United States free of duty. Under the program, an importer posts a bond for twice the amount of duty, taxes, etc. that would otherwise be owed on the importation and agrees to export or destroy the merchandise within a specified time or pay liquidated damages. This program is restricted to certain categories of merchandise listed in subheadings 9813.00.05 through 9813.00.75 of the Harmonized Tariff Schedule (HTS).

Item	No	Yes
Foreign trade zones	<input type="checkbox"/>	<input type="checkbox"/>
Bonded warehouses	<input type="checkbox"/>	<input type="checkbox"/>
Temporary importation under bond	<input type="checkbox"/>	<input type="checkbox"/>

- I-9. **Other trade actions.**--To your knowledge, have the products subject to this proceeding been the subject of any other import relief proceedings in the United States or in any other countries since January 1, 2018?

No	Yes	If yes-- Please specify.
<input type="checkbox"/>	<input type="checkbox"/>	

**PART II.--TRADE AND RELATED INFORMATION**

Further information on this part of the questionnaire can be obtained from **Jordan Harriman (202-205-2610, [jordan.harriman@usitc.gov](mailto:jordan.harriman@usitc.gov))**. Supply all data requested on a calendar-year basis.

**Note.--If your answers to questions in Part II differ for CSPV cells or CSPV modules (or some other such breakout, e.g. bifacial CSPV products vs. all other CSPV products), then please explain. Additional explanations may be included in II-21.**

- II-1. **Contact information.**--Please identify the responsible individual and the manner by which Commission staff may contact that individual regarding the confidential information submitted in Part II.

Name	
Title	
Email	
Telephone	

- II-2a. **Changes in operations.**--Please indicate whether your firm has experienced any of the following changes in relation to the importation of CSPV products since January 1, 2018.

<i>(check as many as appropriate)</i>		<i>(If checked, please describe the nature, date(s), and significance of any such reported changes as well as the business reasons for them; leave completely blank if not applicable)</i>
<input type="checkbox"/>	Office/warehouse openings	
<input type="checkbox"/>	Office/warehouse closings	
<input type="checkbox"/>	Relocations	
<input type="checkbox"/>	Expansions	
<input type="checkbox"/>	Acquisitions/mergers/buyouts	
<input type="checkbox"/>	Consolidations	
<input type="checkbox"/>	Prolonged shutdowns or importation curtailments	
<input type="checkbox"/>	Revised labor agreements	
<input type="checkbox"/>	Technology	
<input type="checkbox"/>	Other	

- II-2b. **COVID-19 pandemic.**—Since January 1, 2020, has the COVID-19 pandemic or have any government actions taken to contain the spread of the COVID-19 virus resulted in changes in your firm's supply chain arrangements, importation, employment, and shipments relating to CSPV products?

<b>No</b>	<b>Yes</b>	<b>If yes, describe these changes including a separate discussion of the (a) supply chain impact, (b) importation and shipment impact, and (c) employment impact of the COVID-19 pandemic.</b>
<input type="checkbox"/>	<input type="checkbox"/>	

- II-2c. **Anticipated changes in operations.**--Would your firm anticipate any changes in its imports, U.S. shipments of imports, or inventories of CSPV products after the safeguard measure terminates?

<b>No</b>	<b>Yes</b>	<b>If yes, supply details as to the time, nature, and significance of such changes and provide underlying assumptions, along with relevant portions of business plans or other supporting documentation, for any trends or projections you may provide. Please note if your response differs by country.</b>
<input type="checkbox"/>	<input type="checkbox"/>	

II-3a. **Arranged imports (CSPV cells).**--Has your firm imported or arranged for the importation of CSPV cells for delivery **after June 30, 2021**?

**"Arranged imports"** are imports for which your firm has placed an order with a foreign supplier for subject merchandise, but delivery of those imports is not scheduled to occur until after the date listed above.

☐ No ☐ Yes—Fill out the table below.

Quantity (in kilowatts)				
Period/Source	Jul-Sept 2021	Oct-Dec 2021	Jan-Mar 2022	Apr-Jun 2022
Cambodia				
Canada				
China				
Germany				
India				
Indonesia				
Japan				
Korea				
Malaysia				
Mexico				
Philippines				
Singapore				
Taiwan				
Thailand				
Turkey				
Vietnam				
All other countries <sup>1</sup>				
Total, all countries	0	0	0	0
<sup>1</sup> Please identify these countries: _____.				

- II-3b. **Arranged imports (CSPV modules).**--Has your firm imported or arranged for the importation of CSPV modules for delivery **after June 30, 2021**? For products such as laminates, panels, and modules that are partially or fully assembled from CSPV cells, the location where the CSPV cells were manufactured determines the country of origin.

**“Arranged imports”** are imports for which your firm has placed an order with a foreign supplier for subject merchandise, but delivery of those imports is not scheduled to occur until after the date listed above.

☐ No ☐ Yes—Fill out the table below.

Quantity (in kilowatts)				
Period/Source	Jul-Sept 2021	Oct-Dec 2021	Jan-Mar 2022	Apr-Jun 2022
Cambodia				
Canada				
China				
Germany				
India				
Indonesia				
Japan				
Korea				
Malaysia				
Mexico				
Philippines				
Singapore				
Taiwan				
Thailand				
Turkey				
Vietnam				
All other countries <sup>1</sup>				
Total, all countries	0	0	0	0
<sup>1</sup> Please identify these countries: _____.				

- II-4. **Reasons for importing if producer.**--If your firm also produces CSPV cells or assembles (fully or partially) CSPV cells into other products (e.g., laminates, panels, modules) in the United States, please indicate the reasons for importing this product. If your firm's reasons differ by source, please elaborate.

**Definitions**

***“Imports”*** – Those products identified for Customs purposes as imports for consumption for which your firm was the importer of record (i.e., was responsible for paying any import duty) or consignee (i.e., to which the merchandise was first delivered). **For products such as laminates, panels, and modules that are partially or fully assembled from CSPV cells, the location where the CSPV cells were manufactured determines the country of origin. (Note the exception in question II-16, which specifically requests imports based on the location of the assembly of the module, laminate, panel, etc.).**

***“Import quantities”*** – Quantities reported should be net of returns.

***“Import values”*** – Values reported should be landed, duty-paid values at the U.S. port of entry, including ocean freight and insurance costs, brokerage charges, and import duties (i.e., all charges except inland freight in the United States).

***“U.S. commercial shipments”*** – Shipments made within the United States as a result of an arm’s length commercial transaction in the ordinary course of business. Report net values (i.e., gross sales values less all discounts, allowances, rebates, prepaid freight, and the value of returned goods) in U.S. dollars, f.o.b. your point of shipment.

***“Internal consumption”*** – Product consumed internally by your firm, including CSPV cells used to assemble other CSPV products, such as modules, panels, and laminates. Such transactions are valued at fair market value.

***“Transfers to related firms”*** – Shipments made to related domestic firms. Such transactions are valued at fair market value.

***“Related firm”*** – A firm that your firm solely or jointly owns, manages, or otherwise controls.

***“Export shipments”*** – Shipments to destinations outside the United States, including shipments to related firms.

***“Inventories”*** – Finished goods inventory, not raw materials or work in progress.

*Note: As requested in Part I of this questionnaire, please keep all supporting documents/records used in the preparation of the trade data, as Commission staff may contact your firm regarding questions on the trade data. The Commission may also request that your company submit copies of the supporting documents/records (such as production and sales schedules, inventory records, etc.) used to compile these data.*

II-5a. **Imports of CSPV cells from Canada.**--Report your firm's U.S. imports of CSPV cells from **Canada** during the specified periods, by specified form and type.

## Canada (Cells)

Quantity (in kilowatts), value (in \$1,000)					
Item	Calendar year			January-June	
	2018	2019	2020	2020	2021
<b>Beginning-of-period inventories</b> (quantity) (A)					
<b>Imports:<sup>1</sup></b>					
<b>Bifacial CSPV cells:</b>					
Quantity (B)					
Value (C)					
<b>All other CSPV cells:</b>					
Quantity (D)					
Value (E)					
<b>U.S. shipments:</b>					
<b>Commercial shipments:</b>					
Quantity (F)					
Value (G)					
<b>Internal consumption:<sup>2</sup></b>					
Quantity (H)					
Value <sup>2</sup> (I)					
<b>Transfers to related firms:<sup>2</sup></b>					
Quantity (J)					
Value <sup>2</sup> (K)					
<b>Export shipments:<sup>3</sup></b>					
Quantity (L)					
Value (M)					
<b>End-of-period inventories</b> (quantity) (N)					

<sup>1</sup> Please identify the foreign producers, if known: \_\_\_\_\_.

<sup>2</sup> Internal consumption and transfers to related firms must be valued at fair market value. If your firm uses a different basis for valuing these transactions in your records, please specify that basis (e.g., cost, cost plus, etc.): \_\_\_\_\_. However, the data provided above in this table should be based on fair market value.

<sup>3</sup> Identify your firm's principal export markets: \_\_\_\_\_.



II-5a. Imports of CSPV cells from Canada.—Continued

RECONCILIATION OF SHIPMENTS, IMPORTS, AND INVENTORIES.--Generally, the data reported for the end-of-period inventories (i.e., line N) should be equal to the beginning-of-period inventories (i.e., line A), plus imports (i.e., lines B and D), less total shipments (i.e., lines F, H, J, and L). Please ensure that any differences are not due to data entry errors in completing this form, but rather actually reflect your firm's records; and also provide any likely explanations for any differences (e.g., theft, loss, damage, record systems issues, etc.) if they exist.

☐ Interact with this checkbox (check or uncheck then select a new cell) to update calculations below.

Reconciliation	Calendar year			January-June	
	2018	2019	2020	2020	2021
A + B + D – F – H – J – L – N = should equal zero ("0") or provide an explanation. <sup>1</sup>	0	0	0	0	0
<sup>1</sup> Explanation if the calculated fields above are returning values other than zero (i.e., "0") but are nonetheless accurate: _____.					

- II-5b. **Imports of CSPV modules from Canada.**--Report your firm's U.S. imports of CSPV modules from **Canada** during the specified periods, by specified form and type. **For products such as laminates, panels, and modules that are partially or fully assembled from CSPV cells, the location where the CSPV cells were manufactured determines the country of origin.**

## Canada (Modules)

Quantity ( <i>in kilowatts</i> ), value ( <i>in \$1,000</i> )					
Item	Calendar year			January-June	
	2018	2019	2020	2020	2021
<b>Beginning-of-period inventories</b> (quantity) (A)					
<b>Imports of CSPV modules:<sup>1</sup></b>					
<b>Using bifacial cells:</b>					
Quantity (B)					
Value (C)					
<b>Using all other cells:</b>					
Quantity (D)					
Value (E)					
<b>U.S. shipments:</b>					
<b>Commercial shipments:</b>					
Quantity (F)					
Value (G)					
<b>Internal consumption:<sup>2</sup></b>					
Quantity (H)					
Value <sup>2</sup> (I)					
<b>Transfers to related firms:<sup>2</sup></b>					
Quantity (J)					
Value <sup>2</sup> (K)					
<b>Export shipments:<sup>3</sup></b>					
Quantity (L)					
Value (M)					
<b>End-of-period inventories</b> (quantity) (N)					

<sup>1</sup> Please identify the foreign producers, if known: \_\_\_\_.

<sup>2</sup> Internal consumption and transfers to related firms must be valued at fair market value. If your firm uses a different basis for valuing these transactions in your records, please specify that basis (e.g., cost, cost plus, etc.): \_\_\_\_\_. However, the data provided above in this table should be based on fair market value.

<sup>3</sup> Identify your firm's principal export markets: \_\_\_\_\_.

II-5b. **Imports of CSPV modules from Canada.–Continued**

**RECONCILIATION OF SHIPMENTS, IMPORTS, AND INVENTORIES.**--Generally, the data reported for the end-of-period inventories (i.e., line N) should be equal to the beginning-of-period inventories (i.e., line A), plus imports (i.e., lines B and D), less total shipments (i.e., lines F, H, J, and L). Please ensure that any differences are not due to data entry errors in completing this form, but rather actually reflect your firm's records; and also provide any likely explanations for any differences (e.g., theft, loss, damage, record systems issues, etc.) if they exist.

☐ Interact with this checkbox (check or uncheck then select a new cell) to update calculations below.

Reconciliation	Calendar year			January-June	
	2018	2019	2020	2020	2021
A + B + D – F – H – J – L – N = should equal zero ("0") or provide an explanation. <sup>1</sup>	0	0	0	0	0
<sup>1</sup> Explanation if the calculated fields above are returning values other than zero (i.e., "0") but are nonetheless accurate: _____.					

II-6a. **Imports of CSPV cells from China.**--Report your firm's U.S. imports of CSPV cells from **China** during the specified periods, by specified form and type.

## China (Cells)

Quantity (in kilowatts), value (in \$1,000)					
Item	Calendar year			January-June	
	2018	2019	2020	2020	2021
<b>Beginning-of-period inventories</b> (quantity) (A)					
<b>Imports:<sup>1</sup></b>					
<b>Bifacial CSPV cells:</b>					
Quantity (B)					
Value (C)					
<b>All other CSPV cells:</b>					
Quantity (D)					
Value (E)					
<b>U.S. shipments:</b>					
<b>Commercial shipments:</b>					
Quantity (F)					
Value (G)					
<b>Internal consumption:<sup>2</sup></b>					
Quantity (H)					
Value <sup>2</sup> (I)					
<b>Transfers to related firms:<sup>2</sup></b>					
Quantity (J)					
Value <sup>2</sup> (K)					
<b>Export shipments:<sup>3</sup></b>					
Quantity (L)					
Value (M)					
<b>End-of-period inventories</b> (quantity) (N)					

<sup>1</sup> Please identify the foreign producers, if known: \_\_\_\_\_.

<sup>2</sup> Internal consumption and transfers to related firms must be valued at fair market value. If your firm uses a different basis for valuing these transactions in your records, please specify that basis (e.g., cost, cost plus, etc.): \_\_\_\_\_. However, the data provided above in this table should be based on fair market value.

<sup>3</sup> Identify your firm's principal export markets: \_\_\_\_\_.

II-6a. Imports of CSPV cells from China.—Continued

RECONCILIATION OF SHIPMENTS, IMPORTS, AND INVENTORIES.--Generally, the data reported for the end-of-period inventories (i.e., line N) should be equal to the beginning-of-period inventories (i.e., line A), plus imports (i.e., lines B and D), less total shipments (i.e., lines F, H, J, and L). Please ensure that any differences are not due to data entry errors in completing this form, but rather actually reflect your firm's records; and also provide any likely explanations for any differences (e.g., theft, loss, damage, record systems issues, etc.) if they exist.

☐ Interact with this checkbox (check or uncheck then select a new cell) to update calculations below.

Reconciliation	Calendar year			January-June	
	2018	2019	2020	2020	2021
A + B + D – F – H – J – L – N = should equal zero ("0") or provide an explanation. <sup>1</sup>	0	0	0	0	0
<sup>1</sup> Explanation if the calculated fields above are returning values other than zero (i.e., "0") but are nonetheless accurate: _____.					

- II-6b. **Imports of CSPV modules from China.**--Report your firm's U.S. imports of CSPV modules from **China** during the specified periods, by specified form and type. **For products such as laminates, panels, and modules that are partially or fully assembled from CSPV cells, the location where the CSPV cells were manufactured determines the country of origin.**

## China (Modules)

Quantity ( <i>in kilowatts</i> ), value ( <i>in \$1,000</i> )					
Item	Calendar year			January-June	
	2018	2019	2020	2020	2021
<b>Beginning-of-period inventories</b> ( <i>quantity</i> ) (A)					
<b>Imports of CSPV modules:<sup>1</sup></b>					
<b>Using bifacial cells:</b>					
<i>Quantity</i> (B)					
<i>Value</i> (C)					
<b>Using all other cells:</b>					
<i>Quantity</i> (D)					
<i>Value</i> (E)					
<b>U.S. shipments:</b>					
<b>Commercial shipments:</b>					
<i>Quantity</i> (F)					
<i>Value</i> (G)					
<b>Internal consumption:<sup>2</sup></b>					
<i>Quantity</i> (H)					
<i>Value</i> <sup>2</sup> (I)					
<b>Transfers to related firms:<sup>2</sup></b>					
<i>Quantity</i> (J)					
<i>Value</i> <sup>2</sup> (K)					
<b>Export shipments:<sup>3</sup></b>					
<i>Quantity</i> (L)					
<i>Value</i> (M)					
<b>End-of-period inventories</b> ( <i>quantity</i> ) (N)					
<p><sup>1</sup> Please identify the foreign producers, if known: ____.</p> <p><sup>2</sup> Internal consumption and transfers to related firms must be valued at fair market value. If your firm uses a different basis for valuing these transactions in your records, please specify that basis (e.g., cost, cost plus, etc.): _____. However, the data provided above in this table should be based on fair market value.</p> <p><sup>3</sup> Identify your firm's principal export markets: _____.</p>					

II-6b. Imports of CSPV modules from China.—Continued

RECONCILIATION OF SHIPMENTS, IMPORTS, AND INVENTORIES.--Generally, the data reported for the end-of-period inventories (i.e., line N) should be equal to the beginning-of-period inventories (i.e., line A), plus imports (i.e., lines B and D), less total shipments (i.e., lines F, H, J, and L). Please ensure that any differences are not due to data entry errors in completing this form, but rather actually reflect your firm's records; and also provide any likely explanations for any differences (e.g., theft, loss, damage, record systems issues, etc.) if they exist.

☐ Interact with this checkbox (check or uncheck then select a new cell) to update calculations below.

Reconciliation	Calendar year			January-June	
	2018	2019	2020	2020	2021
A + B + D – F – H – J – L – N = should equal zero ("0") or provide an explanation. <sup>1</sup>	0	0	0	0	0
<sup>1</sup> Explanation if the calculated fields above are returning values other than zero (i.e., "0") but are nonetheless accurate: _____.					

II-7a. **Imports of CSPV cells from Korea.**--Report your firm's U.S. imports of CSPV cells from **Korea** during the specified periods, by specified form and type.

## Korea (Cells)

Quantity (in kilowatts), value (in \$1,000)					
Item	Calendar year			January-June	
	2018	2019	2020	2020	2021
<b>Beginning-of-period inventories</b> (quantity) (A)					
<b>Imports:<sup>1</sup></b>					
<b>Bifacial CSPV cells:</b>					
Quantity (B)					
Value (C)					
<b>All other CSPV cells:</b>					
Quantity (D)					
Value (E)					
<b>U.S. shipments:</b>					
<b>Commercial shipments:</b>					
Quantity (F)					
Value (G)					
<b>Internal consumption:<sup>2</sup></b>					
Quantity (H)					
Value <sup>2</sup> (I)					
<b>Transfers to related firms:<sup>2</sup></b>					
Quantity (J)					
Value <sup>2</sup> (K)					
<b>Export shipments:<sup>3</sup></b>					
Quantity (L)					
Value (M)					
<b>End-of-period inventories</b> (quantity) (N)					

<sup>1</sup> Please identify the foreign producers, if known: \_\_\_\_\_.

<sup>2</sup> Internal consumption and transfers to related firms must be valued at fair market value. If your firm uses a different basis for valuing these transactions in your records, please specify that basis (e.g., cost, cost plus, etc.): \_\_\_\_\_. However, the data provided above in this table should be based on fair market value.

<sup>3</sup> Identify your firm's principal export markets: \_\_\_\_\_.



II-7a. Imports of CSPV cells from Korea.—Continued

RECONCILIATION OF SHIPMENTS, IMPORTS, AND INVENTORIES.--Generally, the data reported for the end-of-period inventories (i.e., line N) should be equal to the beginning-of-period inventories (i.e., line A), plus imports (i.e., lines B and D), less total shipments (i.e., lines F, H, J, and L). Please ensure that any differences are not due to data entry errors in completing this form, but rather actually reflect your firm's records; and also provide any likely explanations for any differences (e.g., theft, loss, damage, record systems issues, etc.) if they exist.

☐ Interact with this checkbox (check or uncheck then select a new cell) to update calculations below.

Reconciliation	Calendar year			January-June	
	2018	2019	2020	2020	2021
A + B + D – F – H – J – L – N = should equal zero ("0") or provide an explanation. <sup>1</sup>	0	0	0	0	0
<sup>1</sup> Explanation if the calculated fields above are returning values other than zero (i.e., "0") but are nonetheless accurate: _____.					

- II-7b. **Imports of CSPV modules from Korea.**--Report your firm's U.S. imports of CSPV modules from Korea during the specified periods, by specified form and type. **For products such as laminates, panels, and modules that are partially or fully assembled from CSPV cells, the location where the CSPV cells were manufactured determines the country of origin.**

## Korea (Modules)

Quantity ( <i>in kilowatts</i> ), value ( <i>in \$1,000</i> )					
Item	Calendar year			January-June	
	2018	2019	2020	2020	2021
<b>Beginning-of-period inventories</b> (quantity) (A)					
<b>Imports of CSPV modules:<sup>1</sup></b>					
<b>Using bifacial cells:</b>					
Quantity (B)					
Value (C)					
<b>Using all other cells:</b>					
Quantity (D)					
Value (E)					
<b>U.S. shipments:</b>					
<b>Commercial shipments:</b>					
Quantity (F)					
Value (G)					
<b>Internal consumption:<sup>2</sup></b>					
Quantity (H)					
Value <sup>2</sup> (I)					
<b>Transfers to related firms:<sup>2</sup></b>					
Quantity (J)					
Value <sup>2</sup> (K)					
<b>Export shipments:<sup>3</sup></b>					
Quantity (L)					
Value (M)					
<b>End-of-period inventories</b> (quantity) (N)					

<sup>1</sup> Please identify the foreign producers, if known: \_\_\_\_.

<sup>2</sup> Internal consumption and transfers to related firms must be valued at fair market value. If your firm uses a different basis for valuing these transactions in your records, please specify that basis (e.g., cost, cost plus, etc.): \_\_\_\_\_. However, the data provided above in this table should be based on fair market value.

<sup>3</sup> Identify your firm's principal export markets: \_\_\_\_\_.

II-7b. **Imports of CSPV modules from Korea.–Continued**

**RECONCILIATION OF SHIPMENTS, IMPORTS, AND INVENTORIES.**--Generally, the data reported for the end-of-period inventories (i.e., line N) should be equal to the beginning-of-period inventories (i.e., line A), plus imports (i.e., lines B and D), less total shipments (i.e., lines F, H, J, and L). Please ensure that any differences are not due to data entry errors in completing this form, but rather actually reflect your firm's records; and also provide any likely explanations for any differences (e.g., theft, loss, damage, record systems issues, etc.) if they exist.

☐ Interact with this checkbox (check or uncheck then select a new cell) to update calculations below.

Reconciliation	Calendar year			January-June	
	2018	2019	2020	2020	2021
A + B + D – F – H – J – L – N = should equal zero ("0") or provide an explanation. <sup>1</sup>	0	0	0	0	0
<sup>1</sup> Explanation if the calculated fields above are returning values other than zero (i.e., "0") but are nonetheless accurate: _____.					

II-8a. **Imports of CSPV cells from Malaysia.**--Report your firm's U.S. imports of CSPV cells from **Malaysia** during the specified periods, by specified form and type.

## Malaysia (Cells)

Quantity (in kilowatts), value (in \$1,000)					
Item	Calendar year			January-June	
	2018	2019	2020	2020	2021
<b>Beginning-of-period inventories</b> (quantity) (A)					
<b>Imports:<sup>1</sup></b>					
<b>Bifacial CSPV cells:</b>					
Quantity (B)					
Value (C)					
<b>All other CSPV cells:</b>					
Quantity (D)					
Value (E)					
<b>U.S. shipments:</b>					
<b>Commercial shipments:</b>					
Quantity (F)					
Value (G)					
<b>Internal consumption:<sup>2</sup></b>					
Quantity (H)					
Value <sup>2</sup> (I)					
<b>Transfers to related firms:<sup>2</sup></b>					
Quantity (J)					
Value <sup>2</sup> (K)					
<b>Export shipments:<sup>3</sup></b>					
Quantity (L)					
Value (M)					
<b>End-of-period inventories</b> (quantity) (N)					
<sup>1</sup> Please identify the foreign producers, if known: _____. <sup>2</sup> Internal consumption and transfers to related firms must be valued at fair market value. If your firm uses a different basis for valuing these transactions in your records, please specify that basis (e.g., cost, cost plus, etc.): _____. However, the data provided above in this table should be based on fair market value. <sup>3</sup> Identify your firm's principal export markets: _____.					

II-8a. **Imports of CSPV cells from Malaysia.–Continued**

**RECONCILIATION OF SHIPMENTS, IMPORTS, AND INVENTORIES.**--Generally, the data reported for the end-of-period inventories (i.e., line N) should be equal to the beginning-of-period inventories (i.e., line A), plus imports (i.e., lines B and D), less total shipments (i.e., lines F, H, J, and L). Please ensure that any differences are not due to data entry errors in completing this form, but rather actually reflect your firm's records; and also provide any likely explanations for any differences (e.g., theft, loss, damage, record systems issues, etc.) if they exist.

☐ Interact with this checkbox (check or uncheck then select a new cell) to update calculations below.

Reconciliation	Calendar year			January-June	
	2018	2019	2020	2020	2021
A + B + D – F – H – J – L – N = should equal zero ("0") or provide an explanation. <sup>1</sup>	0	0	0	0	0
<sup>1</sup> Explanation if the calculated fields above are returning values other than zero (i.e., "0") but are nonetheless accurate: _____.					

- II-8b. **Imports of CSPV modules from Malaysia.**--Report your firm's U.S. imports of CSPV modules from **Malaysia** during the specified periods, by specified form and type. **For products such as laminates, panels, and modules that are partially or fully assembled from CSPV cells, the location where the CSPV cells were manufactured determines the country of origin.**

## Malaysia (Modules)

Item	Quantity (in kilowatts), value (in \$1,000)				
	Calendar year			January-June	
	2018	2019	2020	2020	2021
<b>Beginning-of-period inventories</b> (quantity) (A)					
<b>Imports of CSPV modules:<sup>1</sup></b>					
<b>Using bifacial cells:</b>					
Quantity (B)					
Value (C)					
<b>Using all other cells:</b>					
Quantity (D)					
Value (E)					
<b>U.S. shipments:</b>					
<b>Commercial shipments:</b>					
Quantity (F)					
Value (G)					
<b>Internal consumption:<sup>2</sup></b>					
Quantity (H)					
Value <sup>2</sup> (I)					
<b>Transfers to related firms:<sup>2</sup></b>					
Quantity (J)					
Value <sup>2</sup> (K)					
<b>Export shipments:<sup>3</sup></b>					
Quantity (L)					
Value (M)					
<b>End-of-period inventories</b> (quantity) (N)					
<sup>1</sup> Please identify the foreign producers, if known: _____. <sup>2</sup> Internal consumption and transfers to related firms must be valued at fair market value. If your firm uses a different basis for valuing these transactions in your records, please specify that basis (e.g., cost, cost plus, etc.): _____. However, the data provided above in this table should be based on fair market value. <sup>3</sup> Identify your firm's principal export markets: _____.					

II-8b. **Imports of CSPV modules from Malaysia.–Continued**

**RECONCILIATION OF SHIPMENTS, IMPORTS, AND INVENTORIES.**--Generally, the data reported for the end-of-period inventories (i.e., line N) should be equal to the beginning-of-period inventories (i.e., line A), plus imports (i.e., lines B and D), less total shipments (i.e., lines F, H, J, and L). Please ensure that any differences are not due to data entry errors in completing this form, but rather actually reflect your firm's records; and also provide any likely explanations for any differences (e.g., theft, loss, damage, record systems issues, etc.) if they exist.

☐ Interact with this checkbox (check or uncheck then select a new cell) to update calculations below.

Reconciliation	Calendar year			January-June	
	2018	2019	2020	2020	2021
A + B + D – F – H – J – L – N = should equal zero ("0") or provide an explanation. <sup>1</sup>	0	0	0	0	0
<sup>1</sup> Explanation if the calculated fields above are returning values other than zero (i.e., "0") but are nonetheless accurate: _____.					

II-9a. **Imports of CSPV cells from Mexico.**--Report your firm's U.S. imports of CSPV cells from **Mexico** during the specified periods, by specified form and type.

## Mexico (Cells)

Quantity (in kilowatts), value (in \$1,000)					
Item	Calendar year			January-June	
	2018	2019	2020	2020	2021
<b>Beginning-of-period inventories</b> (quantity) (A)					
<b>Imports:</b> <sup>1</sup>					
<b>Bifacial CSPV cells:</b>					
Quantity (B)					
Value (C)					
<b>All other CSPV cells:</b>					
Quantity (D)					
Value (E)					
<b>U.S. shipments:</b>					
<b>Commercial shipments:</b>					
Quantity (F)					
Value (G)					
<b>Internal consumption:</b> <sup>2</sup>					
Quantity (H)					
Value <sup>2</sup> (I)					
<b>Transfers to related firms:</b> <sup>2</sup>					
Quantity (J)					
Value <sup>2</sup> (K)					
<b>Export shipments:</b> <sup>3</sup>					
Quantity (L)					
Value (M)					
<b>End-of-period inventories</b> (quantity) (N)					

<sup>1</sup> Please identify the foreign producers, if known: \_\_\_\_\_.

<sup>2</sup> Internal consumption and transfers to related firms must be valued at fair market value. If your firm uses a different basis for valuing these transactions in your records, please specify that basis (e.g., cost, cost plus, etc.): \_\_\_\_\_. However, the data provided above in this table should be based on fair market value.

<sup>3</sup> Identify your firm's principal export markets: \_\_\_\_\_.



II-9a. **Imports of CSPV cells from Mexico.**—Continued

**RECONCILIATION OF SHIPMENTS, IMPORTS, AND INVENTORIES.**--Generally, the data reported for the end-of-period inventories (i.e., line N) should be equal to the beginning-of-period inventories (i.e., line A), plus imports (i.e., lines B and D), less total shipments (i.e., lines F, H, J, and L). Please ensure that any differences are not due to data entry errors in completing this form, but rather actually reflect your firm's records; and also provide any likely explanations for any differences (e.g., theft, loss, damage, record systems issues, etc.) if they exist.

☐ Interact with this checkbox (check or uncheck then select a new cell) to update calculations below.

Reconciliation	Calendar year			January-June	
	2018	2019	2020	2020	2021
A + B + D – F – H – J – L – N = should equal zero ("0") or provide an explanation. <sup>1</sup>	0	0	0	0	0
<sup>1</sup> Explanation if the calculated fields above are returning values other than zero (i.e., "0") but are nonetheless accurate: _____.					

- II-9b. **Imports of CSPV modules from Mexico.**--Report your firm's U.S. imports of CSPV modules from **Mexico** during the specified periods, by specified form and type. **For products such as laminates, panels, and modules that are partially or fully assembled from CSPV cells, the location where the CSPV cells were manufactured determines the country of origin.**

## Mexico (Modules)

Item	Quantity ( <i>in kilowatts</i> ), value ( <i>in \$1,000</i> )				
	Calendar year			January-June	
	2018	2019	2020	2020	2021
<b>Beginning-of-period inventories</b> (quantity) (A)					
<b>Imports of CSPV modules:<sup>1</sup></b>					
<b>Using bifacial cells:</b>					
Quantity (B)					
Value (C)					
<b>Using all other cells:</b>					
Quantity (D)					
Value (E)					
<b>U.S. shipments:</b>					
<b>Commercial shipments:</b>					
Quantity (F)					
Value (G)					
<b>Internal consumption:<sup>2</sup></b>					
Quantity (H)					
Value <sup>2</sup> (I)					
<b>Transfers to related firms:<sup>2</sup></b>					
Quantity (J)					
Value <sup>2</sup> (K)					
<b>Export shipments:<sup>3</sup></b>					
Quantity (L)					
Value (M)					
<b>End-of-period inventories</b> (quantity) (N)					
<sup>1</sup> Please identify the foreign producers, if known: _____. <sup>2</sup> Internal consumption and transfers to related firms must be valued at fair market value. If your firm uses a different basis for valuing these transactions in your records, please specify that basis (e.g., cost, cost plus, etc.): _____. However, the data provided above in this table should be based on fair market value. <sup>3</sup> Identify your firm's principal export markets: _____.					

II-9b. **Imports of CSPV modules from Mexico.–Continued**

**RECONCILIATION OF SHIPMENTS, IMPORTS, AND INVENTORIES.**--Generally, the data reported for the end-of-period inventories (i.e., line N) should be equal to the beginning-of-period inventories (i.e., line A), plus imports (i.e., lines B and D), less total shipments (i.e., lines F, H, J, and L). Please ensure that any differences are not due to data entry errors in completing this form, but rather actually reflect your firm's records; and also provide any likely explanations for any differences (e.g., theft, loss, damage, record systems issues, etc.) if they exist.

☐ Interact with this checkbox (check or uncheck then select a new cell) to update calculations below.

Reconciliation	Calendar year			January-June	
	2018	2019	2020	2020	2021
A + B + D – F – H – J – L – N = should equal zero ("0") or provide an explanation. <sup>1</sup>	0	0	0	0	0
<sup>1</sup> Explanation if the calculated fields above are returning values other than zero (i.e., "0") but are nonetheless accurate: _____.					

II-10a. **Imports of CSPV cells from Singapore.**--Report your firm's U.S. imports of CSPV cells from **Singapore** during the specified periods, by specified form and type.

## Singapore (Cells)

Quantity (in kilowatts), value (in \$1,000)					
Item	Calendar year			January-June	
	2018	2019	2020	2020	2021
<b>Beginning-of-period inventories</b> (quantity) (A)					
<b>Imports:<sup>1</sup></b>					
<b>Bifacial CSPV cells:</b>					
Quantity (B)					
Value (C)					
<b>All other CSPV cells:</b>					
Quantity (D)					
Value (E)					
<b>U.S. shipments:</b>					
<b>Commercial shipments:</b>					
Quantity (F)					
Value (G)					
<b>Internal consumption:<sup>2</sup></b>					
Quantity (H)					
Value <sup>2</sup> (I)					
<b>Transfers to related firms:<sup>2</sup></b>					
Quantity (J)					
Value <sup>2</sup> (K)					
<b>Export shipments:<sup>3</sup></b>					
Quantity (L)					
Value (M)					
<b>End-of-period inventories</b> (quantity) (N)					

<sup>1</sup> Please identify the foreign producers, if known: \_\_\_\_\_.

<sup>2</sup> Internal consumption and transfers to related firms must be valued at fair market value. If your firm uses a different basis for valuing these transactions in your records, please specify that basis (e.g., cost, cost plus, etc.): \_\_\_\_\_. However, the data provided above in this table should be based on fair market value.

<sup>3</sup> Identify your firm's principal export markets: \_\_\_\_\_.

II-10a. Imports of CSPV cells from Singapore.—Continued

RECONCILIATION OF SHIPMENTS, IMPORTS, AND INVENTORIES.--Generally, the data reported for the end-of-period inventories (i.e., line N) should be equal to the beginning-of-period inventories (i.e., line A), plus imports (i.e., lines B and D), less total shipments (i.e., lines F, H, J, and L). Please ensure that any differences are not due to data entry errors in completing this form, but rather actually reflect your firm's records; and also provide any likely explanations for any differences (e.g., theft, loss, damage, record systems issues, etc.) if they exist.

☐ Interact with this checkbox (check or uncheck then select a new cell) to update calculations below.

Reconciliation	Calendar year			January-June	
	2018	2019	2020	2020	2021
A + B + D – F – H – J – L – N = should equal zero ("0") or provide an explanation. <sup>1</sup>	0	0	0	0	0
<sup>1</sup> Explanation if the calculated fields above are returning values other than zero (i.e., "0") but are nonetheless accurate: _____.					

- II-10b. **Imports of CSPV modules from Singapore.**--Report your firm's U.S. imports of CSPV modules from **Singapore** during the specified periods, by specified form and type. **For products such as laminates, panels, and modules that are partially or fully assembled from CSPV cells, the location where the CSPV cells were manufactured determines the country of origin.**

## Singapore (Modules)

Quantity ( <i>in kilowatts</i> ), value ( <i>in \$1,000</i> )					
Item	Calendar year			January-June	
	2018	2019	2020	2020	2021
<b>Beginning-of-period inventories</b> ( <i>quantity</i> ) (A)					
<b>Imports of CSPV modules:<sup>1</sup></b>					
<b>Using bifacial cells:</b>					
<i>Quantity</i> (B)					
<i>Value</i> (C)					
<b>Using all other cells:</b>					
<i>Quantity</i> (D)					
<i>Value</i> (E)					
<b>U.S. shipments:</b>					
<b>Commercial shipments:</b>					
<i>Quantity</i> (F)					
<i>Value</i> (G)					
<b>Internal consumption:<sup>2</sup></b>					
<i>Quantity</i> (H)					
<i>Value</i> <sup>2</sup> (I)					
<b>Transfers to related firms:<sup>2</sup></b>					
<i>Quantity</i> (J)					
<i>Value</i> <sup>2</sup> (K)					
<b>Export shipments:<sup>3</sup></b>					
<i>Quantity</i> (L)					
<i>Value</i> (M)					
<b>End-of-period inventories</b> ( <i>quantity</i> ) (N)					

<sup>1</sup> Please identify the foreign producers, if known: \_\_\_\_.

<sup>2</sup> Internal consumption and transfers to related firms must be valued at fair market value. If your firm uses a different basis for valuing these transactions in your records, please specify that basis (e.g., cost, cost plus, etc.): \_\_\_\_\_. However, the data provided above in this table should be based on fair market value.

<sup>3</sup> Identify your firm's principal export markets: \_\_\_\_\_.

II-10b. Imports of CSPV modules from Singapore.—Continued

RECONCILIATION OF SHIPMENTS, IMPORTS, AND INVENTORIES.--Generally, the data reported for the end-of-period inventories (i.e., line N) should be equal to the beginning-of-period inventories (i.e., line A), plus imports (i.e., lines B and D), less total shipments (i.e., lines F, H, J, and L). Please ensure that any differences are not due to data entry errors in completing this form, but rather actually reflect your firm's records; and also provide any likely explanations for any differences (e.g., theft, loss, damage, record systems issues, etc.) if they exist.

☐ Interact with this checkbox (check or uncheck then select a new cell) to update calculations below.

Reconciliation	Calendar year			January-June	
	2018	2019	2020	2020	2021
A + B + D – F – H – J – L – N = should equal zero ("0") or provide an explanation. <sup>1</sup>	0	0	0	0	0
<sup>1</sup> Explanation if the calculated fields above are returning values other than zero (i.e., "0") but are nonetheless accurate: _____.					

II-11a. **Imports of CSPV cells from Thailand.**--Report your firm's U.S. imports of CSPV cells from **Thailand** during the specified periods, by specified form and type.

## Thailand (Cells)

Quantity (in kilowatts), value (in \$1,000)					
Item	Calendar year			January-June	
	2018	2019	2020	2020	2021
<b>Beginning-of-period inventories</b> (quantity) (A)					
<b>Imports:<sup>1</sup></b>					
<b>Bifacial CSPV cells:</b>					
Quantity (B)					
Value (C)					
<b>All other CSPV cells:</b>					
Quantity (D)					
Value (E)					
<b>U.S. shipments:</b>					
<b>Commercial shipments:</b>					
Quantity (F)					
Value (G)					
<b>Internal consumption:<sup>2</sup></b>					
Quantity (H)					
Value <sup>2</sup> (I)					
<b>Transfers to related firms:<sup>2</sup></b>					
Quantity (J)					
Value <sup>2</sup> (K)					
<b>Export shipments:<sup>3</sup></b>					
Quantity (L)					
Value (M)					
<b>End-of-period inventories</b> (quantity) (N)					

<sup>1</sup> Please identify the foreign producers, if known: \_\_\_\_\_.

<sup>2</sup> Internal consumption and transfers to related firms must be valued at fair market value. If your firm uses a different basis for valuing these transactions in your records, please specify that basis (e.g., cost, cost plus, etc.): \_\_\_\_\_. However, the data provided above in this table should be based on fair market value.

<sup>3</sup> Identify your firm's principal export markets: \_\_\_\_\_.



II-11a. Imports of CSPV cells from Thailand.—Continued

RECONCILIATION OF SHIPMENTS, IMPORTS, AND INVENTORIES.--Generally, the data reported for the end-of-period inventories (i.e., line N) should be equal to the beginning-of-period inventories (i.e., line A), plus imports (i.e., lines B and D), less total shipments (i.e., lines F, H, J, and L). Please ensure that any differences are not due to data entry errors in completing this form, but rather actually reflect your firm's records; and also provide any likely explanations for any differences (e.g., theft, loss, damage, record systems issues, etc.) if they exist.

☐ Interact with this checkbox (check or uncheck then select a new cell) to update calculations below.

Reconciliation	Calendar year			January-June	
	2018	2019	2020	2020	2021
A + B + D – F – H – J – L – N = should equal zero ("0") or provide an explanation. <sup>1</sup>	0	0	0	0	0
<sup>1</sup> Explanation if the calculated fields above are returning values other than zero (i.e., "0") but are nonetheless accurate: _____.					

- II-11b. **Imports of CSPV modules from Thailand.**--Report your firm's U.S. imports of CSPV modules from **Thailand** during the specified periods, by specified form and type. **For products such as laminates, panels, and modules that are partially or fully assembled from CSPV cells, the location where the CSPV cells were manufactured determines the country of origin.**

## Thailand (Modules)

Item	Quantity ( <i>in kilowatts</i> ), value ( <i>in \$1,000</i> )				
	Calendar year			January-June	
	2018	2019	2020	2020	2021
<b>Beginning-of-period inventories</b> ( <i>quantity</i> ) (A)					
<b>Imports of CSPV modules:</b> <sup>1</sup>					
<b>Using bifacial cells:</b>					
Quantity (B)					
Value (C)					
<b>Using all other cells:</b>					
Quantity (D)					
Value (E)					
<b>U.S. shipments:</b>					
<b>Commercial shipments:</b>					
Quantity (F)					
Value (G)					
<b>Internal consumption:</b> <sup>2</sup>					
Quantity (H)					
Value <sup>2</sup> (I)					
<b>Transfers to related firms:</b> <sup>2</sup>					
Quantity (J)					
Value <sup>2</sup> (K)					
<b>Export shipments:</b> <sup>3</sup>					
Quantity (L)					
Value (M)					
<b>End-of-period inventories</b> ( <i>quantity</i> ) (N)					
<sup>1</sup> Please identify the foreign producers, if known: _____. <sup>2</sup> Internal consumption and transfers to related firms must be valued at fair market value. If your firm uses a different basis for valuing these transactions in your records, please specify that basis (e.g., cost, cost plus, etc.): _____. However, the data provided above in this table should be based on fair market value. <sup>3</sup> Identify your firm's principal export markets: _____.					

II-11b. **Imports of CSPV modules from Thailand.**–Continued

**RECONCILIATION OF SHIPMENTS, IMPORTS, AND INVENTORIES.**--Generally, the data reported for the end-of-period inventories (i.e., line N) should be equal to the beginning-of-period inventories (i.e., line A), plus imports (i.e., lines B and D), less total shipments (i.e., lines F, H, J, and L). Please ensure that any differences are not due to data entry errors in completing this form, but rather actually reflect your firm's records; and also provide any likely explanations for any differences (e.g., theft, loss, damage, record systems issues, etc.) if they exist.

☐ Interact with this checkbox (check or uncheck then select a new cell) to update calculations below.

Reconciliation	Calendar year			January-June	
	2018	2019	2020	2020	2021
A + B + D – F – H – J – L – N = should equal zero ("0") or provide an explanation. <sup>1</sup>	0	0	0	0	0
<sup>1</sup> Explanation if the calculated fields above are returning values other than zero (i.e., "0") but are nonetheless accurate: _____.					

II-12a. **Imports of CSPV cells from Vietnam.**—Report your firm's U.S. imports of CSPV cells from **Vietnam** during the specified periods, by specified form and type.

## Vietnam (Cells)

Quantity ( <i>in kilowatts</i> ), value ( <i>in \$1,000</i> )					
Item	Calendar year			January-June	
	2018	2019	2020	2020	2021
<b>Beginning-of-period inventories</b> ( <i>quantity</i> ) (A)					
<b>Imports:<sup>1</sup></b>					
<b>Bifacial CSPV cells:</b>					
<i>Quantity</i> (B)					
<i>Value</i> (C)					
<b>All other CSPV cells:</b>					
<i>Quantity</i> (D)					
<i>Value</i> (E)					
<b>U.S. shipments:</b>					
<b>Commercial shipments:</b>					
<i>Quantity</i> (F)					
<i>Value</i> (G)					
<b>Internal consumption:<sup>2</sup></b>					
<i>Quantity</i> (H)					
<i>Value</i> <sup>2</sup> (I)					
<b>Transfers to related firms:<sup>2</sup></b>					
<i>Quantity</i> (J)					
<i>Value</i> <sup>2</sup> (K)					
<b>Export shipments:<sup>3</sup></b>					
<i>Quantity</i> (L)					
<i>Value</i> (M)					
<b>End-of-period inventories</b> ( <i>quantity</i> ) (N)					
<sup>1</sup> Please identify the foreign producers, if known: _____. <sup>2</sup> Internal consumption and transfers to related firms must be valued at fair market value. If your firm uses a different basis for valuing these transactions in your records, please specify that basis (e.g., cost, cost plus, etc.): _____. However, the data provided above in this table should be based on fair market value. <sup>3</sup> Identify your firm's principal export markets: _____.					

II-12a. Imports of CSPV cells from Vietnam.—Continued

RECONCILIATION OF SHIPMENTS, IMPORTS, AND INVENTORIES.—Generally, the data reported for the end-of-period inventories (i.e., line N) should be equal to the beginning-of-period inventories (i.e., line A), plus imports (i.e., lines B and D), less total shipments (i.e., lines F, H, J, and L). Please ensure that any differences are not due to data entry errors in completing this form, but rather actually reflect your firm's records; and also provide any likely explanations for any differences (e.g., theft, loss, damage, record systems issues, etc.) if they exist.

☐ Interact with this checkbox (check or uncheck then select a new cell) to update calculations below.

Reconciliation	Calendar year			January-June	
	2018	2019	2020	2020	2021
A + B + D – F – H – J – L – N = should equal zero ("0") or provide an explanation. <sup>1</sup>	0	0	0	0	0
<sup>1</sup> Explanation if the calculated fields above are returning values other than zero (i.e., "0") but are nonetheless accurate: _____.					

- II-12b. **Imports of CSPV modules from Vietnam.**--Report your firm's U.S. imports of CSPV modules from **Vietnam** during the specified periods, by specified form and type. **For products such as laminates, panels, and modules that are partially or fully assembled from CSPV cells, the location where the CSPV cells were manufactured determines the country of origin.**

## Vietnam (Modules)

Quantity ( <i>in kilowatts</i> ), value ( <i>in \$1,000</i> )					
Item	Calendar year			January-June	
	2018	2019	2020	2020	2021
<b>Beginning-of-period inventories</b> (quantity) (A)					
<b>Imports of CSPV modules:<sup>1</sup></b>					
<b>Using bifacial cells:</b>					
Quantity (B)					
Value (C)					
<b>Using all other cells:</b>					
Quantity (D)					
Value (E)					
<b>U.S. shipments:</b>					
<b>Commercial shipments:</b>					
Quantity (F)					
Value (G)					
<b>Internal consumption:<sup>2</sup></b>					
Quantity (H)					
Value <sup>2</sup> (I)					
<b>Transfers to related firms:<sup>2</sup></b>					
Quantity (J)					
Value <sup>2</sup> (K)					
<b>Export shipments:<sup>3</sup></b>					
Quantity (L)					
Value (M)					
<b>End-of-period inventories</b> (quantity) (N)					
<sup>1</sup> Please identify the foreign producers, if known: _____. <sup>2</sup> Internal consumption and transfers to related firms must be valued at fair market value. If your firm uses a different basis for valuing these transactions in your records, please specify that basis (e.g., cost, cost plus, etc.): _____. However, the data provided above in this table should be based on fair market value. <sup>3</sup> Identify your firm's principal export markets: _____.					

II-12b. Imports of CSPV modules from Vietnam.—Continued

RECONCILIATION OF SHIPMENTS, IMPORTS, AND INVENTORIES.--Generally, the data reported for the end-of-period inventories (i.e., line N) should be equal to the beginning-of-period inventories (i.e., line A), plus imports (i.e., lines B and D), less total shipments (i.e., lines F, H, J, and L). Please ensure that any differences are not due to data entry errors in completing this form, but rather actually reflect your firm's records; and also provide any likely explanations for any differences (e.g., theft, loss, damage, record systems issues, etc.) if they exist.

☐ Interact with this checkbox (check or uncheck then select a new cell) to update calculations below.

Reconciliation	Calendar year			January-June	
	2018	2019	2020	2020	2021
A + B + D – F – H – J – L – N = should equal zero ("0") or provide an explanation. <sup>1</sup>	0	0	0	0	0
<sup>1</sup> Explanation if the calculated fields above are returning values other than zero (i.e., "0") but are nonetheless accurate: _____.					

II-13a. **Imports of CSPV cells from all other sources.**--Report your firm's U.S. imports of CSPV cells from **all other sources** during the specified periods, by specified form and type.

*Import data for this question (i.e., rows B through E) will automatically populate from the data provided in question II-11c.*

## All other sources (Cells)

Item	Quantity (in kilowatts), value (in \$1,000)				
	Calendar year			January-June	
	2018	2019	2020	2020	2021
<b>Beginning-of-period inventories</b> (quantity) (A)					
<b>Imports:<sup>1</sup></b>					
<b>Bifacial CSPV cells:</b>					
Quantity (B)	0	0	0	0	0
Value (C)	0	0	0	0	0
<b>All other CSPV cells:</b>					
Quantity (D)	0	0	0	0	0
Value (E)	0	0	0	0	0
<b>U.S. shipments:</b>					
<b>Commercial shipments:</b>					
Quantity (F)					
Value (G)					
<b>Internal consumption:<sup>2</sup></b>					
Quantity (H)					
Value <sup>2</sup> (I)					
<b>Transfers to related firms:<sup>2</sup></b>					
Quantity (J)					
Value <sup>2</sup> (K)					
<b>Export shipments:<sup>3</sup></b>					
Quantity (L)					
Value (M)					
<b>End-of-period inventories</b> (quantity) (N)					

<sup>1</sup> Please identify the foreign producers, if known, and identify foreign producers by source: \_\_\_\_\_.

<sup>2</sup> Internal consumption and transfers to related firms must be valued at fair market value. If your firm uses a different basis for valuing these transactions in your records, please specify that basis (e.g., cost, cost plus, etc.): \_\_\_\_\_. However, the data provided above in this table should be based on fair market value.

<sup>3</sup> Identify your firm's principal export markets: \_\_\_\_\_.



II-13a. Imports of CSPV cells from all other sources.—Continued

RECONCILIATION OF SHIPMENTS, IMPORTS, AND INVENTORIES.--Generally, the data reported for the end-of-period inventories (i.e., line N) should be equal to the beginning-of-period inventories (i.e., line A), plus imports (i.e., lines B and D), less total shipments (i.e., lines F, H, J, and L). Please ensure that any differences are not due to data entry errors in completing this form, but rather actually reflect your firm's records; and also provide any likely explanations for any differences (e.g., theft, loss, damage, record systems issues, etc.) if they exist.

☐ Interact with this checkbox (check or uncheck then select a new cell) to update calculations below.

Reconciliation	Calendar year			January-June	
	2018	2019	2020	2020	2021
A + B + D – F – H – J – L – N = should equal zero ("0") or provide an explanation. <sup>1</sup>	0	0	0	0	0
<sup>1</sup> Explanation if the calculated fields above are returning values other than zero (i.e., "0") but are nonetheless accurate: _____.					

- II-13b. **Imports of CSPV modules from all other sources.**--Report your firm's U.S. imports of CSPV modules from **All other sources** during the specified periods, by specified form and type. **For products such as laminates, panels, and modules that are partially or fully assembled from CSPV cells, the location where the CSPV cells were manufactured determines the country of origin.**

*Import data for this question (i.e., rows B through E) will automatically populate from the data provided in question II-11d.*

## All other sources (Modules)

Quantity (in kilowatts), value (in \$1,000)					
Item	Calendar year			January-June	
	2018	2019	2020	2020	2021
<b>Beginning-of-period inventories</b> (quantity) (A)					
<b>Imports of CSPV modules:<sup>1</sup></b>					
<b>Using bifacial cells:</b>					
Quantity (B)	0	0	0	0	0
Value (C)	0	0	0	0	0
<b>Using all other cells:</b>					
Quantity (D)	0	0	0	0	0
Value (E)	0	0	0	0	0
<b>U.S. shipments:</b>					
<b>Commercial shipments:</b>					
Quantity (F)					
Value (G)					
<b>Internal consumption:<sup>2</sup></b>					
Quantity (H)					
Value <sup>2</sup> (I)					
<b>Transfers to related firms:<sup>2</sup></b>					
Quantity (J)					
Value <sup>2</sup> (K)					
<b>Export shipments:<sup>3</sup></b>					
Quantity (L)					
Value (M)					
<b>End-of-period inventories</b> (quantity) (N)					

<sup>1</sup> Please identify the foreign producers, if known, and identify foreign producers by source: \_\_\_\_\_.

<sup>2</sup> Internal consumption and transfers to related firms must be valued at fair market value. If your firm uses a different basis for valuing these transactions in your records, please specify that basis (e.g., cost, cost plus, etc.): \_\_\_\_\_. However, the data provided above in this table should be based on fair market value.

<sup>3</sup> Identify your firm's principal export markets: \_\_\_\_\_.

II-13b. **Imports of CSPV modules from all other sources.**–Continued

**RECONCILIATION OF SHIPMENTS, IMPORTS, AND INVENTORIES.**--Generally, the data reported for the end-of-period inventories (i.e., line N) should be equal to the beginning-of-period inventories (i.e., line A), plus imports (i.e., lines B and D), less total shipments (i.e., lines F, H, J, and L). Please ensure that any differences are not due to data entry errors in completing this form, but rather actually reflect your firm's records; and also provide any likely explanations for any differences (e.g., theft, loss, damage, record systems issues, etc.) if they exist.

☐ Interact with this checkbox (check or uncheck then select a new cell) to update calculations below.

Reconciliation	Calendar year			January-June	
	2018	2019	2020	2020	2021
A + B + D – F – H – J – L – N = should equal zero ("0") or provide an explanation. <sup>1</sup>	0	0	0	0	0
<sup>1</sup> Explanation if the calculated fields above are returning values other than zero (i.e., "0") but are nonetheless accurate: _____.					

- II-13c. **U.S. imports from all other sources by source (Cells).**--Report your firm's U.S. imports of CSPV cells by source and cell type below. Data provided in this question will be aggregated in rows B through E of question II-11a.

## All other sources (Cells)

Quantity (in kilowatts), value (in \$1,000)					
Item	Calendar years			January-June	
	2018	2019	2020	2020	2021
<b>U.S. CSPV cell imports from:</b>					
<b>Cambodia:</b>					
<i>Bifacial (quantity)</i>					
<i>Bifacial (value)</i>					
<i>All other (quantity)</i>					
<i>All other (value)</i>					
<b>Germany:</b>					
<i>Bifacial (quantity)</i>					
<i>Bifacial (value)</i>					
<i>All other (quantity)</i>					
<i>All other (value)</i>					
<b>India:</b>					
<i>Bifacial (quantity)</i>					
<i>Bifacial (value)</i>					
<i>All other (quantity)</i>					
<i>All other (value)</i>					
<b>Indonesia:</b>					
<i>Bifacial (quantity)</i>					
<i>Bifacial (value)</i>					
<i>All other (quantity)</i>					
<i>All other (value)</i>					
<b>Japan:</b>					
<i>Bifacial (quantity)</i>					
<i>Bifacial (value)</i>					
<i>All other (quantity)</i>					
<i>All other (value)</i>					

II-13c. **U.S. imports from all other sources by source (Cells).**—*Continued***All other sources (Cells)**

Quantity (in kilowatts), value (in \$1,000)					
Item	Calendar years			January-June	
	2018	2019	2020	2020	2021
<b>U.S. CSPV cell imports from:</b>					
<b>Philippines:</b>					
<i>Bifacial (quantity)</i>					
<i>Bifacial (value)</i>					
<i>All other (quantity)</i>					
<i>All other (value)</i>					
<b>Taiwan:</b>					
<i>Bifacial (quantity)</i>					
<i>Bifacial (value)</i>					
<i>All other (quantity)</i>					
<i>All other (value)</i>					
<b>Turkey:</b>					
<i>Bifacial (quantity)</i>					
<i>Bifacial (value)</i>					
<i>All other (quantity)</i>					
<i>All other (value)</i>					
<b>All other countries:<sup>1</sup></b>					
<i>Bifacial (quantity)</i>					
<i>Bifacial (value)</i>					
<i>All other (quantity)</i>					
<i>All other (value)</i>					

<sup>1</sup> Do not include imports previously reported in questions II-5 through II-12 (i.e., imports from Canada, China, Korea, Malaysia, Mexico, Singapore, Thailand, or Vietnam). Please identify these sources: \_\_\_\_\_.

II-13d. **U.S. imports from all other sources by source (Modules).**--Report your firm's U.S. imports of CSPV modules by source and cell type below. Data provided in this question will be aggregated in rows B through E of question II-11b.

## All other sources (Modules)

Quantity (in kilowatts), value (in \$1,000)					
Item	Calendar years			January-June	
	2018	2019	2020	2020	2021
<b>U.S. CSPV modules imports from:</b>					
<b>Cambodia:</b>					
<i>Bifacial (quantity)</i>					
<i>Bifacial (value)</i>					
<i>All other (quantity)</i>					
<i>All other (value)</i>					
<b>Germany:</b>					
<i>Bifacial (quantity)</i>					
<i>Bifacial (value)</i>					
<i>All other (quantity)</i>					
<i>All other (value)</i>					
<b>India:</b>					
<i>Bifacial (quantity)</i>					
<i>Bifacial (value)</i>					
<i>All other (quantity)</i>					
<i>All other (value)</i>					
<b>Indonesia:</b>					
<i>Bifacial (quantity)</i>					
<i>Bifacial (value)</i>					
<i>All other (quantity)</i>					
<i>All other (value)</i>					
<b>Japan:</b>					
<i>Bifacial (quantity)</i>					
<i>Bifacial (value)</i>					
<i>All other (quantity)</i>					
<i>All other (value)</i>					

II-13d. U.S. imports from all other sources by source (Modules).—Continued**All other sources (Modules)**

Quantity (in kilowatts), value (in \$1,000)					
Item	Calendar years			January-June	
	2018	2019	2020	2020	2021
<b>U.S. CSPV modules imports:</b>					
<b>Philippines:</b>					
<i>Bifacial (quantity)</i>					
<i>Bifacial (value)</i>					
<i>All other (quantity)</i>					
<i>All other (value)</i>					
<b>Taiwan:</b>					
<i>Bifacial (quantity)</i>					
<i>Bifacial (value)</i>					
<i>All other (quantity)</i>					
<i>All other (value)</i>					
<b>Turkey:</b>					
<i>Bifacial (quantity)</i>					
<i>Bifacial (value)</i>					
<i>All other (quantity)</i>					
<i>All other (value)</i>					
<b>All other countries:<sup>1</sup></b>					
<i>Bifacial (quantity)</i>					
<i>Bifacial (value)</i>					
<i>All other (quantity)</i>					
<i>All other (value)</i>					

<sup>1</sup> Do not include imports previously reported in questions II-5 through II-12 (i.e., imports from Canada, China, Korea, Malaysia, Mexico, Singapore, Thailand, or Vietnam). Please identify these sources: \_\_\_\_\_.

II-14. **Monthly U.S. imports.**—Report the monthly quantity and value of your firm's U.S. imports of CSPV products (i.e., CSPV cells and CSPV modules) imported from all countries combined by form.

Month	Quantity ( <i>in kilowatts</i> ), value ( <i>in \$1,000</i> )			
	CSPV modules using bifacial cells		CSPV modules using all other cells	
	Quantity	Value	Quantity	Value
2018.--				
January				
February				
March				
April				
May				
June				
July				
August				
September				
October				
November				
December				
2019.--				
January				
February				
March				
April				
May				
June				
July				
August				
September				
October				
November				
December				



II-14. **Monthly U.S. imports.--Continued**

Month	Quantity (in kilowatts), value (in \$1,000)			
	CSPV modules using bifacial cells		CSPV modules using bifacial cells	
	Quantity	Quantity	Quantity	Quantity
2020.--				
January				
February				
March				
April				
May				
June				
July				
August				
September				
October				
November				
December				
2021.--				
January				
February				
March				
April				
May				
June				

Month	Calendar year 2018	Calendar year 2019	Calendar year 2020	Jan.-Jun. 2020	Jan.-Jun. 2021
Aggregate monthly imports (Quantity)	0	0	0	0	0
Aggregate monthly imports (Value)	0	0	0	0	0

**RECONCILIATION OF IMPORTS.--**Please ensure that the total imports reported for the requested periods from all countries combined matches the monthly data reported here. If the calculated fields below return values other than zero (i.e., "0"), the data reported must be revised prior to submission to the Commission.

Month	Calendar year 2018	Calendar year 2019	Calendar year 2020	Jan.-Jun. 2020	Jan.-Jun. 2021
Aggregate monthly imports (Quantity)	0	0	0	0	0
Aggregate monthly imports (Value)	0	0	0	0	0

- II-15. **Channels of distribution.**--Report your firm's U.S. shipments (i.e., inclusive of commercial U.S. shipments, internal U.S. consumption, and transfers to U.S. related firms) of CSPV products imported from **all countries combined** by form (i.e., either cell or module) and by channel of distribution.

Quantity (in kilowatts) and value (in \$1,000)					
Item	Calendar years			January-June	
	2018	2019	2020	2020	2021
<b>U.S. shipments of CSPV cell imports:</b>					
To module assemblers:					
Quantity (O)					
Value (P)					
To distributors:					
Quantity (Q)					
Value (R)					
To residential installers:					
Quantity (S)					
Value (T)					
To commercial installers:					
Quantity (U)					
Value (V)					
To utilities/developers:					
Quantity (W)					
Value (X)					
<b>U.S. shipments of CSPV module imports:</b>					
To module assemblers:					
Quantity (Y)					
Value (Z)					
To distributors:					
Quantity (AA)					
Value (AB)					
To residential installers:					
Quantity (AC)					
Value (AD)					
To commercial installers:					
Quantity (AE)					
Value (AF)					
To utilities/developers:					
Quantity (AG)					
Value (AH)					

II-15. Channels of distribution--*Continued*

RECONCILIATION OF CHANNELS--Please ensure that the quantities and values reported for channels of distribution (i.e., lines O through AH) in each time period equal the quantity reported for U.S. shipments (i.e., lines F through K for all sources) in each time period. If the calculated fields below return values other than zero (i.e., "0"), the data reported must be revised prior to submission to the Commission.

Reconciliation	Calendar year			January-June	
	2018	2019	2020	2020	2021
O + Q + S + U + W + Y + AA + AC + AE + AG – F – H – J (for all sources) = zero ("0"), if not revise.	0	0	0	0	0
P + R + T + V + X + Z + AB + AD + AF + AH – G – I – K (for all sources) = zero ("0"), if not revise.	0	0	0	0	0

II-16a. **Imports of CSPV products from Canada.**--Report your firm's U.S. imports of CSPV assembled products from Canada during the specified periods.

**FOR THIS TABLE ONLY.**—The location of the CSPV assembly determines the country of origin.

**CANADA** (list foreign producers/module assemblers in Canada \_\_\_\_ )  
(list country of origin of cells \_\_\_\_ )

Quantity (in kilowatts), value (in \$1,000)					
Item	Calendar year			January-June	
	2018	2019	2020	2020	2021
Imports of CSPV modules: <sup>1</sup>					
Using bifacial cells:					
Quantity					
Value					
Using all other cells:					
Quantity					
Value					

II-16b. **Imports of CSPV products from Mexico.**--Report your firm's U.S. imports of CSPV assembled products from Mexico during the specified periods.

**FOR THIS TABLE ONLY.**—The location of the CSPV assembly determines the country of origin.

**MEXICO** (list foreign producers/module assemblers in Mexico \_\_\_\_ )  
(list country of origin of cells \_\_\_\_ )

Quantity (in kilowatts), value (in \$1,000)					
Item	Calendar year			January-June	
	2018	2019	2020	2020	2021
Imports of CSPV modules: <sup>1</sup>					
Using bifacial cells:					
Quantity					
Value					
Using all other cells:					
Quantity					
Value					

- II-17a. **CSPV imports by cell type.**-- Please indicate below the type of cell(s) for which data are being reported in this questionnaire (i.e., either direct cell imports or imports of modules using these cell(s)) and provide an explanation concerning any product mix changes that have occurred since January 1, 2018.

<b><i>Check type of cell(s) for which data are reported in this questionnaire. Check all that apply.</i></b>	<b>Cells in CSPV products imported by your firm</b>
<input type="checkbox"/>	Mono cells
<input type="checkbox"/>	Multi cells
<input type="checkbox"/>	PERC cells
<input type="checkbox"/>	Heterojunction cells
<input type="checkbox"/>	Bifacial cells
<input type="checkbox"/>	P-type cells
<input type="checkbox"/>	N-type cells
<input type="checkbox"/>	Greater than 162 x 162 millimeter cells
<input type="checkbox"/>	Other cells (please describe):
If checked, please provide explanation of any product mix changes since January 1, 2018.  	

- II-17b. **CSPV imports by form factor.**--Please indicate below the type of cell form factor(s) for which data are being reported in this questionnaire (i.e., either direct cell imports or imports of modules using these cell(s)) and provide an explanation concerning any product mix changes that have occurred since January 1, 2018.

<i>Check type of cell form factor(s) for which data are reported in this questionnaire. Check all that apply.</i>	<b>Cell form factors in CSPV products imported by your firm</b>
<input type="checkbox"/>	M0
<input type="checkbox"/>	G1
<input type="checkbox"/>	M2
<input type="checkbox"/>	M4
<input type="checkbox"/>	M6
<input type="checkbox"/>	Larger than M6
<input type="checkbox"/>	All other cell form factors (please describe):
If checked, please provide explanation of any product mix changes since January 1, 2018.	

- II-18. **Transfers to related firms.**-- If your firm reported transfers to related firms in any of the data tables in part II, please identify the firm(s) and indicate the nature of the relationship between your firm and the related firms (e.g., joint venture, wholly owned subsidiary) and whether the transfers were priced at market value or by a non-market formula.

--

- II-19. **Effect of safeguard measure.**--Describe the significance of the safeguard measures imposed by the President effective February 7, 2018 (i.e., in the form of (a) a tariff-rate quota on imports of solar cells not partially or fully assembled into other products and (b) an increase in duties on imports of CSPV modules), in terms of its effect on your firm's imports, U.S. shipments, exports, and inventories. You may wish to compare your firm's operations before and after the imposition of relief.

--

- II-20. **Tariff compensation.**--Has your firm been reimbursed or otherwise compensated by your foreign supplier(s) for the tariffs imposed on imports of CSPV products under the safeguard measure?

No	Yes	If yes, please identify the foreign producer(s), country(ies), and product(s), as well as the amount of such reimbursement below.
<input type="checkbox"/>	<input type="checkbox"/>	

- II-21. **Other explanations.**--If your firm would like to further explain a response to a question in Part II for which a narrative box was not provided, please note the question number and the explanation in the space provided below. Please also use this space to highlight any issues your firm had in providing the data in this section, including but not limited to technical issues with the MS Word questionnaire.

--

**PART III.--PRICING AND MARKET FACTORS**

Further information on this part of the questionnaire can be obtained from **Craig Thomsen (202-205-3226, [Craig.Thomsen@usitc.gov](mailto:Craig.Thomsen@usitc.gov))**.

- III-1. **Contact information.**--Please identify the responsible individual and the manner by which Commission staff may contact that individual regarding the confidential information submitted in part III.

Name	
Title	
Email	
Telephone	
Fax	

**PRICE DATA**

- III-2. This question requests quarterly quantity and value data for your firm's commercial shipments to unrelated U.S. customers since January 1, 2018 of the following imported modules:

**Product 1.**-- Monocrystalline silicon module with front-side of less than 1.9 square meters and a peak power wattage between 275w to 325w, inclusive, P-max or Wp as measured under Standard Test Conditions ("STC"), excluding bifacial modules.

**Product 2.**-- Monocrystalline silicon module with front-side area of less than 1.9 square meters and a peak power wattage between 330w to 415w, inclusive, P-max or Wp as measured under Standard Test Conditions ("STC"), excluding bifacial modules.

**Product 3.**-- Monocrystalline silicon module with front-side area of greater than or equal to 1.9 square meters and a peak power wattage between 325w to 375w, inclusive, P-max or Wp as measured under Standard Test Conditions ("STC"), excluding bifacial modules.

**Product 4.**-- Monocrystalline silicon module with front-side area of greater than or equal to 1.9 square meters and a peak power wattage between 380w to 430w, inclusive, P-max or Wp as measured under Standard Test Conditions ("STC"), excluding bifacial modules.

**Product 5.**-- Monocrystalline silicon module with front-side area of greater than or equal to 1.9 square meters and a peak power wattage between 440w to 640w, inclusive, P-max or Wp as measured under Standard Test Conditions ("STC"), excluding bifacial modules.

**Product 6.**-- Monocrystalline silicon bifacial module that generates power on both sides of the panel with front-side area of greater than or equal to 1.9 square meters and a peak power wattage greater than or equal to 325w, inclusive, P-max or Wp as measured under Standard Test Conditions ("STC").



**Please note that values should be f.o.b., U.S. point of shipment and should not include U.S.-inland transportation costs. Values should reflect the *final net* amount paid to your firm (i.e., should be net of all deductions for discounts or rebates).**

During January 2018-June 2021, did your firm import and sell to unrelated U.S. customers any of the above listed products (or any products that were competitive with these products)?

<input type="checkbox"/>	<b>Yes.</b> --Please complete the following pricing data table(s) as appropriate.
<input type="checkbox"/>	<b>No.</b> --Skip to question III-4.

III-2a. **Price data.**--Report below the quarterly price data<sup>1</sup> for pricing products<sup>2</sup> of modules imported that contain cells made in Canada and sold by your firm.

## Imported modules containing cells made in Canada

Report data in *kilowatts* and actual *dollars* (not 1,000s).

(Quantity in kilowatts, value in dollars)						
Period of shipment	Product 1		Product 2		Product 3	
	Quantity	Value	Quantity	Value	Quantity	Value
<b>2018:</b>						
Jan-Mar						
Apr-Jun						
Jul-Sep						
Oct-Dec						
<b>2019:</b>						
Jan-Mar						
Apr-Jun						
Jul-Sep						
Oct-Dec						
<b>2020:</b>						
Jan-Mar						
Apr-Jun						
Jul-Sep						
Oct-Dec						
<b>2021:</b>						
Jan-Mar						
Apr-Jun						

<sup>1</sup> Net values (*i.e.*, gross sales values less all discounts, allowances, rebates, prepaid freight, and the value of returned goods), f.o.b. your firm's U.S. point of shipment. Please subtract any discounts, rebates, and returns from the quarter in which the sale occurred.

<sup>2</sup> Pricing product definitions are provided on the first page of Part III.

**Note.**--If your firm's product does not exactly meet the product specifications but is competitive with the specified product, provide a description of the product. Also, please explain any anomalies in your firm's reported pricing data.

Product 1:

Product 2:

Product 3:

III-2a. Price data.—Continued.

## Imported modules containing cells made in Canada

Report data in *kilowatts* and actual *dollars* (not 1,000s).

(Quantity in kilowatts, value in dollars)

Period of shipment	Product 4		Product 5		Product 6	
	Quantity	Value	Quantity	Value	Quantity	Value
<b>2018:</b>						
Jan-Mar						
Apr-Jun						
Jul-Sep						
Oct-Dec						
<b>2019:</b>						
Jan-Mar						
Apr-Jun						
Jul-Sep						
Oct-Dec						
<b>2020:</b>						
Jan-Mar						
Apr-Jun						
Jul-Sep						
Oct-Dec						
<b>2021:</b>						
Jan-Mar						
Apr-Jun						

<sup>1</sup> Net values (*i.e.*, gross sales values less all discounts, allowances, rebates, prepaid freight, and the value of returned goods), f.o.b. your firm's U.S. point of shipment. Please subtract any discounts, rebates, and returns from the quarter in which the sale occurred.

<sup>2</sup> Pricing product definitions are provided on the first page of Part III.

**Note.**--If your firm's product does not exactly meet the product specifications but is competitive with the specified product, provide a description of the product. Also, please explain any anomalies in your firm's reported pricing data.

Product 4:

Product 5:

Product 6:

III-2b. **Price data.**--Report below the quarterly price data<sup>1</sup> for pricing products<sup>2</sup> of modules imported that contain cells made in China and sold by your firm.

## Imported modules containing cells made in China

Report data in *kilowatts* and actual *dollars* (not 1,000s).

(Quantity in kilowatts, value in dollars)						
Period of shipment	Product 1		Product 2		Product 3	
	Quantity	Value	Quantity	Value	Quantity	Value
<b>2018:</b>						
Jan-Mar						
Apr-Jun						
Jul-Sep						
Oct-Dec						
<b>2019:</b>						
Jan-Mar						
Apr-Jun						
Jul-Sep						
Oct-Dec						
<b>2020:</b>						
Jan-Mar						
Apr-Jun						
Jul-Sep						
Oct-Dec						
<b>2021:</b>						
Jan-Mar						
Apr-Jun						

<sup>1</sup> Net values (*i.e.*, gross sales values less all discounts, allowances, rebates, prepaid freight, and the value of returned goods), f.o.b. your firm's U.S. point of shipment. Please subtract any discounts, rebates, and returns from the quarter in which the sale occurred.

<sup>2</sup> Pricing product definitions are provided on the first page of Part III.

**Note.**--If your firm's product does not exactly meet the product specifications but is competitive with the specified product, provide a description of the product. Also, please explain any anomalies in your firm's reported pricing data.

Product 1:

Product 2:

Product 3:

III-2b. Price data.—Continued.**Imported modules containing cells made in China**Report data in *kilowatts* and actual *dollars* (not 1,000s).

(Quantity in kilowatts, value in dollars)

Period of shipment	Product 4		Product 5		Product 6	
	Quantity	Value	Quantity	Value	Quantity	Value
<b>2018:</b>						
Jan-Mar						
Apr-Jun						
Jul-Sep						
Oct-Dec						
<b>2019:</b>						
Jan-Mar						
Apr-Jun						
Jul-Sep						
Oct-Dec						
<b>2020:</b>						
Jan-Mar						
Apr-Jun						
Jul-Sep						
Oct-Dec						
<b>2021:</b>						
Jan-Mar						
Apr-Jun						

<sup>1</sup> Net values (*i.e.*, gross sales values less all discounts, allowances, rebates, prepaid freight, and the value of returned goods), f.o.b. your firm's U.S. point of shipment. Please subtract any discounts, rebates, and returns from the quarter in which the sale occurred.

<sup>2</sup> Pricing product definitions are provided on the first page of Part III.

**Note.**--If your firm's product does not exactly meet the product specifications but is competitive with the specified product, provide a description of the product. Also, please explain any anomalies in your firm's reported pricing data.

Product 4:

Product 5:

Product 6:

III-2c. **Price data.**--Report below the quarterly price data<sup>1</sup> for pricing products<sup>2</sup> products<sup>2</sup> of modules imported that contain cells made from Korea and sold by your firm.

## Imported modules containing cells made in Korea

Report data in *kilowatts* and actual *dollars* (not 1,000s).

(Quantity in kilowatts, value in dollars)						
Period of shipment	Product 1		Product 2		Product 3	
	Quantity	Value	Quantity	Value	Quantity	Value
<b>2018:</b>						
Jan-Mar						
Apr-Jun						
Jul-Sep						
Oct-Dec						
<b>2019:</b>						
Jan-Mar						
Apr-Jun						
Jul-Sep						
Oct-Dec						
<b>2020:</b>						
Jan-Mar						
Apr-Jun						
Jul-Sep						
Oct-Dec						
<b>2021:</b>						
Jan-Mar						
Apr-Jun						

<sup>1</sup> Net values (*i.e.*, gross sales values less all discounts, allowances, rebates, prepaid freight, and the value of returned goods), f.o.b. your firm's U.S. point of shipment. Please subtract any discounts, rebates, and returns from the quarter in which the sale occurred.

<sup>2</sup> Pricing product definitions are provided on the first page of Part III.

**Note.**--If your firm's product does not exactly meet the product specifications but is competitive with the specified product, provide a description of the product. Also, please explain any anomalies in your firm's reported pricing data.

Product 1:

Product 2:

Product 3:

III-2c. Price data.--Continued.**Imported modules containing cells made in Korea****Report data in kilowatts and actual dollars (not 1,000s).****(Quantity in kilowatts, value in dollars)**

Period of shipment	Product 4		Product 5		Product 6	
	Quantity	Value	Quantity	Value	Quantity	Value
<b>2018:</b>						
Jan-Mar						
Apr-Jun						
Jul-Sep						
Oct-Dec						
<b>2019:</b>						
Jan-Mar						
Apr-Jun						
Jul-Sep						
Oct-Dec						
<b>2020:</b>						
Jan-Mar						
Apr-Jun						
Jul-Sep						
Oct-Dec						
<b>2021:</b>						
Jan-Mar						
Apr-Jun						

<sup>1</sup> Net values (*i.e.*, gross sales values less all discounts, allowances, rebates, prepaid freight, and the value of returned goods), f.o.b. your firm's U.S. point of shipment. Please subtract any discounts, rebates, and returns from the quarter in which the sale occurred.

<sup>2</sup> Pricing product definitions are provided on the first page of Part III.

**Note.**--If your firm's product does not exactly meet the product specifications but is competitive with the specified product, provide a description of the product. Also, please explain any anomalies in your firm's reported pricing data.

Product 4:

Product 5:

Product 6:

III-2d. **Price data.**--Report below the quarterly price data<sup>1</sup> for pricing products<sup>2</sup> products<sup>2</sup> of modules imported that contain cells made from Malaysia and sold by your firm.

## Imported modules containing cells made in Malaysia

Report data in *kilowatts* and actual *dollars* (not 1,000s).

(Quantity in kilowatts, value in dollars)

Period of shipment	Product 1		Product 2		Product 3	
	Quantity	Value	Quantity	Value	Quantity	Value
<b>2018:</b>						
Jan-Mar						
Apr-Jun						
Jul-Sep						
Oct-Dec						
<b>2019:</b>						
Jan-Mar						
Apr-Jun						
Jul-Sep						
Oct-Dec						
<b>2020:</b>						
Jan-Mar						
Apr-Jun						
Jul-Sep						
Oct-Dec						
<b>2021:</b>						
Jan-Mar						
Apr-Jun						

<sup>1</sup> Net values (*i.e.*, gross sales values less all discounts, allowances, rebates, prepaid freight, and the value of returned goods), f.o.b. your firm's U.S. point of shipment. Please subtract any discounts, rebates, and returns from the quarter in which the sale occurred.

<sup>2</sup> Pricing product definitions are provided on the first page of Part III.

**Note.**--If your firm's product does not exactly meet the product specifications but is competitive with the specified product, provide a description of the product. Also, please explain any anomalies in your firm's reported pricing data.

Product 1:

Product 2:

Product 3:



III-2d. Price data.--Continued.**Imported modules containing cells made in Malaysia****Report data in *kilowatts* and actual *dollars* (not 1,000s).**

<b>(Quantity in kilowatts, value in dollars)</b>						
<b>Period of shipment</b>	<b>Product 4</b>		<b>Product 5</b>		<b>Product 6</b>	
	<b>Quantity</b>	<b>Value</b>	<b>Quantity</b>	<b>Value</b>	<b>Quantity</b>	<b>Value</b>
<b>2018:</b>						
Jan-Mar						
Apr-Jun						
Jul-Sep						
Oct-Dec						
<b>2019:</b>						
Jan-Mar						
Apr-Jun						
Jul-Sep						
Oct-Dec						
<b>2020:</b>						
Jan-Mar						
Apr-Jun						
Jul-Sep						
Oct-Dec						
<b>2021:</b>						
Jan-Mar						
Apr-Jun						

<sup>1</sup> Net values (*i.e.*, gross sales values less all discounts, allowances, rebates, prepaid freight, and the value of returned goods), f.o.b. your firm's U.S. point of shipment. Please subtract any discounts, rebates, and returns from the quarter in which the sale occurred.

<sup>2</sup> Pricing product definitions are provided on the first page of Part III.

**Note.**--If your firm's product does not exactly meet the product specifications but is competitive with the specified product, provide a description of the product. Also, please explain any anomalies in your firm's reported pricing data.

Product 4:

Product 5:

Product 6:

III-2e. **Price data.**--Report below the quarterly price data<sup>1</sup> for pricing products<sup>2</sup> of modules imported that contain cells made from Mexico and sold by your firm.

## Imported modules containing cells made in Mexico

Report data in *kilowatts* and actual *dollars* (not 1,000s).

(Quantity in kilowatts, value in dollars)

Period of shipment	Product 1		Product 2		Product 3	
	Quantity	Value	Quantity	Value	Quantity	Value
<b>2018:</b>						
Jan-Mar						
Apr-Jun						
Jul-Sep						
Oct-Dec						
<b>2019:</b>						
Jan-Mar						
Apr-Jun						
Jul-Sep						
Oct-Dec						
<b>2020:</b>						
Jan-Mar						
Apr-Jun						
Jul-Sep						
Oct-Dec						
<b>2021:</b>						
Jan-Mar						
Apr-Jun						

<sup>1</sup> Net values (*i.e.*, gross sales values less all discounts, allowances, rebates, prepaid freight, and the value of returned goods), f.o.b. your firm's U.S. point of shipment. Please subtract any discounts, rebates, and returns from the quarter in which the sale occurred.

<sup>2</sup> Pricing product definitions are provided on the first page of Part III.

**Note.**--If your firm's product does not exactly meet the product specifications but is competitive with the specified product, provide a description of the product. Also, please explain any anomalies in your firm's reported pricing data.

Product 1:

Product 2:

Product 3:

III-2e. Price data.--Continued.**Imported modules containing cells made in Mexico****Report data in kilowatts and actual dollars (not 1,000s).****(Quantity in kilowatts, value in dollars)**

Period of shipment	Product 4		Product 5		Product 6	
	Quantity	Value	Quantity	Value	Quantity	Value
<b>2018:</b>						
Jan-Mar						
Apr-Jun						
Jul-Sep						
Oct-Dec						
<b>2019:</b>						
Jan-Mar						
Apr-Jun						
Jul-Sep						
Oct-Dec						
<b>2020:</b>						
Jan-Mar						
Apr-Jun						
Jul-Sep						
Oct-Dec						
<b>2021:</b>						
Jan-Mar						
Apr-Jun						

<sup>1</sup> Net values (*i.e.*, gross sales values less all discounts, allowances, rebates, prepaid freight, and the value of returned goods), f.o.b. your firm's U.S. point of shipment. Please subtract any discounts, rebates, and returns from the quarter in which the sale occurred.

<sup>2</sup> Pricing product definitions are provided on the first page of Part III.

**Note.**--If your firm's product does not exactly meet the product specifications but is competitive with the specified product, provide a description of the product. Also, please explain any anomalies in your firm's reported pricing data.

Product 4:

Product 5:

Product 6:

III-2f. **Price data.**--Report below the quarterly price data<sup>1</sup> for pricing products<sup>2</sup> of modules imported that contain cells made from Singapore and sold by your firm.

## Imported modules containing cells made in Singapore

Report data in *kilowatts* and actual *dollars* (not 1,000s).

(Quantity in kilowatts, value in dollars)

Period of shipment	Product 1		Product 2		Product 3	
	Quantity	Value	Quantity	Value	Quantity	Value
<b>2018:</b>						
Jan-Mar						
Apr-Jun						
Jul-Sep						
Oct-Dec						
<b>2019:</b>						
Jan-Mar						
Apr-Jun						
Jul-Sep						
Oct-Dec						
<b>2020:</b>						
Jan-Mar						
Apr-Jun						
Jul-Sep						
Oct-Dec						
<b>2021:</b>						
Jan-Mar						
Apr-Jun						

<sup>1</sup> Net values (*i.e.*, gross sales values less all discounts, allowances, rebates, prepaid freight, and the value of returned goods), f.o.b. your firm's U.S. point of shipment. Please subtract any discounts, rebates, and returns from the quarter in which the sale occurred.

<sup>2</sup> Pricing product definitions are provided on the first page of Part III.

**Note.**--If your firm's product does not exactly meet the product specifications but is competitive with the specified product, provide a description of the product. Also, please explain any anomalies in your firm's reported pricing data.

Product 1:

Product 2:

Product 3:

III-2f. Price data.--Continued.**Imported modules containing cells made in Singapore****Report data in *kilowatts* and actual *dollars* (not 1,000s).****(Quantity in kilowatts, value in dollars)**

Period of shipment	Product 4		Product 5		Product 6	
	Quantity	Value	Quantity	Value	Quantity	Value
<b>2018:</b>						
Jan-Mar						
Apr-Jun						
Jul-Sep						
Oct-Dec						
<b>2019:</b>						
Jan-Mar						
Apr-Jun						
Jul-Sep						
Oct-Dec						
<b>2020:</b>						
Jan-Mar						
Apr-Jun						
Jul-Sep						
Oct-Dec						
<b>2021:</b>						
Jan-Mar						
Apr-Jun						

<sup>1</sup> Net values (*i.e.*, gross sales values less all discounts, allowances, rebates, prepaid freight, and the value of returned goods), f.o.b. your firm's U.S. point of shipment. Please subtract any discounts, rebates, and returns from the quarter in which the sale occurred.

<sup>2</sup> Pricing product definitions are provided on the first page of Part III.

**Note.**--If your firm's product does not exactly meet the product specifications but is competitive with the specified product, provide a description of the product. Also, please explain any anomalies in your firm's reported pricing data.

Product 4:

Product 5:

Product 6:

III-2g. **Price data.**--Report below the quarterly price data<sup>1</sup> for pricing products<sup>2</sup> of modules imported that contain cells made from Thailand and sold by your firm.

## Imported modules containing cells made in Thailand

Report data in *kilowatts* and actual *dollars* (not 1,000s).

(Quantity in kilowatts, value in dollars)

Period of shipment	Product 1		Product 2		Product 3	
	Quantity	Value	Quantity	Value	Quantity	Value
<b>2018:</b>						
Jan-Mar						
Apr-Jun						
Jul-Sep						
Oct-Dec						
<b>2019:</b>						
Jan-Mar						
Apr-Jun						
Jul-Sep						
Oct-Dec						
<b>2020:</b>						
Jan-Mar						
Apr-Jun						
Jul-Sep						
Oct-Dec						
<b>2021:</b>						
Jan-Mar						
Apr-Jun						

<sup>1</sup> Net values (*i.e.*, gross sales values less all discounts, allowances, rebates, prepaid freight, and the value of returned goods), f.o.b. your firm's U.S. point of shipment. Please subtract any discounts, rebates, and returns from the quarter in which the sale occurred.

<sup>2</sup> Pricing product definitions are provided on the first page of Part III.

**Note.**--If your firm's product does not exactly meet the product specifications but is competitive with the specified product, provide a description of the product. Also, please explain any anomalies in your firm's reported pricing data.

Product 1:

Product 2:

Product 3:

III-2g. Price data.—Continued.

## Imported modules containing cells made in Thailand

Report data in *kilowatts* and actual *dollars* (not 1,000s).

(Quantity in kilowatts, value in dollars)

Period of shipment	Product 4		Product 5		Product 6	
	Quantity	Value	Quantity	Value	Quantity	Value
<b>2018:</b>						
Jan-Mar						
Apr-Jun						
Jul-Sep						
Oct-Dec						
<b>2019:</b>						
Jan-Mar						
Apr-Jun						
Jul-Sep						
Oct-Dec						
<b>2020:</b>						
Jan-Mar						
Apr-Jun						
Jul-Sep						
Oct-Dec						
<b>2021:</b>						
Jan-Mar						
Apr-Jun						

<sup>1</sup> Net values (*i.e.*, gross sales values less all discounts, allowances, rebates, prepaid freight, and the value of returned goods), f.o.b. your firm's U.S. point of shipment. Please subtract any discounts, rebates, and returns from the quarter in which the sale occurred.

<sup>2</sup> Pricing product definitions are provided on the first page of Part III.

**Note.**--If your firm's product does not exactly meet the product specifications but is competitive with the specified product, provide a description of the product. Also, please explain any anomalies in your firm's reported pricing data.

Product 4:

Product 5:

Product 6:

III-2h. **Price data.**--Report below the quarterly price data<sup>1</sup> for pricing products<sup>2</sup> of modules imported that contain cells made from Vietnam and sold by your firm.

## Imported modules containing cells made in Vietnam

Report data in *kilowatts* and actual *dollars* (not 1,000s).

(Quantity in kilowatts, value in dollars)

Period of shipment	Product 1		Product 2		Product 3	
	Quantity	Value	Quantity	Value	Quantity	Value
<b>2018:</b>						
Jan-Mar						
Apr-Jun						
Jul-Sep						
Oct-Dec						
<b>2019:</b>						
Jan-Mar						
Apr-Jun						
Jul-Sep						
Oct-Dec						
<b>2020:</b>						
Jan-Mar						
Apr-Jun						
Jul-Sep						
Oct-Dec						
<b>2021:</b>						
Jan-Mar						
Apr-Jun						

<sup>1</sup> Net values (*i.e.*, gross sales values less all discounts, allowances, rebates, prepaid freight, and the value of returned goods), f.o.b. your firm's U.S. point of shipment. Please subtract any discounts, rebates, and returns from the quarter in which the sale occurred.

<sup>2</sup> Pricing product definitions are provided on the first page of Part III.

**Note.**--If your firm's product does not exactly meet the product specifications but is competitive with the specified product, provide a description of the product. Also, please explain any anomalies in your firm's reported pricing data.

Product 1:

Product 2:

Product 3:



III-2h. Price data.--Continued.

## Imported modules containing cells made in Vietnam

Report data in *kilowatts* and actual *dollars* (not 1,000s).

(Quantity in kilowatts, value in dollars)						
Period of shipment	Product 4		Product 5		Product 6	
	Quantity	Value	Quantity	Value	Quantity	Value
<b>2018:</b>						
Jan-Mar						
Apr-Jun						
Jul-Sep						
Oct-Dec						
<b>2019:</b>						
Jan-Mar						
Apr-Jun						
Jul-Sep						
Oct-Dec						
<b>2020:</b>						
Jan-Mar						
Apr-Jun						
Jul-Sep						
Oct-Dec						
<b>2021:</b>						
Jan-Mar						
Apr-Jun						

<sup>1</sup> Net values (*i.e.*, gross sales values less all discounts, allowances, rebates, prepaid freight, and the value of returned goods), f.o.b. your firm's U.S. point of shipment. Please subtract any discounts, rebates, and returns from the quarter in which the sale occurred.

<sup>2</sup> Pricing product definitions are provided on the first page of Part III.

**Note.**--If your firm's product does not exactly meet the product specifications but is competitive with the specified product, provide a description of the product. Also, please explain any anomalies in your firm's reported pricing data.

Product 4:

Product 5:

Product 6:

III-2i. **Price data.**--Report below the quarterly price data<sup>1</sup> for pricing products<sup>2</sup> sold by your firm that involved modules manufactured from cells produced in all other countries.

## Imported modules containing cells made in All Other Countries

Please identify the source(s) of any such imports reported in this table: \_\_\_\_\_

Report data in *kilowatts* and actual *dollars* (not 1,000s).

(Quantity in kilowatts, value in dollars)						
Period of shipment	Product 1		Product 2		Product 3	
	Quantity	Value	Quantity	Value	Quantity	Value
<b>2018:</b>						
Jan-Mar						
Apr-Jun						
Jul-Sep						
Oct-Dec						
<b>2019:</b>						
Jan-Mar						
Apr-Jun						
Jul-Sep						
Oct-Dec						
<b>2020:</b>						
Jan-Mar						
Apr-Jun						
Jul-Sep						
Oct-Dec						
<b>2021:</b>						
Jan-Mar						
Apr-Jun						

<sup>1</sup> Net values (*i.e.*, gross sales values less all discounts, allowances, rebates, prepaid freight, and the value of returned goods), f.o.b. your firm's U.S. point of shipment. Please subtract any discounts, rebates, and returns from the quarter in which the sale occurred.

<sup>2</sup> Pricing product definitions are provided on the first page of Part III.

**Note.**--If your firm's product does not exactly meet the product specifications but is competitive with the specified product, provide a description of the product. Also, please explain any anomalies in your firm's reported pricing data.

Product 1:

Product 2:

Product 3:

III-2i. Price data.--Continued

## Imported modules containing cells made in All Other Countries

Report data in *kilowatts* and actual *dollars* (not 1,000s).

(Quantity in kilowatts, value in dollars)						
Period of shipment	Product 4		Product 5		Product 6	
	Quantity	Value	Quantity	Value	Quantity	Value
<b>2018:</b>						
Jan-Mar						
Apr-Jun						
Jul-Sep						
Oct-Dec						
<b>2019:</b>						
Jan-Mar						
Apr-Jun						
Jul-Sep						
Oct-Dec						
<b>2020:</b>						
Jan-Mar						
Apr-Jun						
Jul-Sep						
Oct-Dec						
<b>2021:</b>						
Jan-Mar						
Apr-Jun						

<sup>1</sup> Net values (*i.e.*, gross sales values less all discounts, allowances, rebates, prepaid freight, and the value of returned goods), f.o.b. your firm's U.S. point of shipment. Please subtract any discounts, rebates, and returns from the quarter in which the sale occurred.

<sup>2</sup> Pricing product definitions are provided on the first page of Part III.

**Note.**--If your firm's product does not exactly meet the product specifications but is competitive with the specified product, provide a description of the product. Also, please explain any anomalies in your firm's reported pricing data.

Product 4:

Product 5:

Product 6:

- III-2j. **Price data checklist.**--Please check that the pricing data in question IV-2(a-i) have been correctly reported.

Are the price data reported above:	<b>✓ if Yes</b>
In actual dollars ( <b>not</b> \$1,000) and kilowatts?	<input type="checkbox"/>
F.o.b. U.S. point of shipment (i.e., does not include U.S. transport costs)?	<input type="checkbox"/>
Net of all discounts and rebates?	<input type="checkbox"/>
Have discounts, rebates, and returns been credited to the quarter in which the sale occurred?	<input type="checkbox"/>
Quantities do not exceed commercial shipments in Part II for each respective country in each year?	<input type="checkbox"/>
Explanation(s) for any boxes not checked:	

- III-3. **Pricing data methodology.**--Please describe the method and the kinds of documents/records that were used to compile the price data that you reported above in response to questions III-2a to III-2i.

--

*Note: As requested in Part I of this questionnaire, please keep all supporting documents/records used in the preparation of the price data, as Commission staff may contact your firm regarding questions on the price data. The Commission may also request that your company submit copies of the supporting documents/records (such as sales journal, invoices, etc.) used to compile these data.*

**Note.**--If your answers to questions in Part III differ for CSPV cells or CSPV modules (or some other such breakout such as bifacial modules), then please explain.

III-4. **Availability of supply.**—

(a) Has the availability of CSPV cells in the U.S. market changed since February 7, 2018?

Availability of cells in the U.S. market	No	Yes	Please explain, noting the countries and reasons for the changes. <i>Please also note any changes resulting from COVID-19 pandemic.</i>
<b>Changes since February 7, 2018:</b>			
U.S.-produced product	<input type="checkbox"/>	<input type="checkbox"/>	
Imports from other countries	<input type="checkbox"/>	<input type="checkbox"/>	

(b) Has the availability of CSPV modules in the U.S. market changed since February 7, 2018?

Availability of modules in the U.S. market	No	Yes	Please explain, noting the countries and reasons for the changes. <i>Please also note any changes resulting from COVID-19 pandemic.</i>
<b>Changes since February 7, 2018:</b>			
U.S.-produced product	<input type="checkbox"/>	<input type="checkbox"/>	
Imports from other countries	<input type="checkbox"/>	<input type="checkbox"/>	

III-5. **Supply constraints.**--Has your firm refused, declined, or been unable to supply CSPV products since February 7, 2018 (examples include placing customers on allocation or “controlled order entry,” declining to accept new customers or renew existing customers, delivering less than the quantity promised, being unable to meet timely shipment commitments, etc.)? *Please also note any changes resulting from COVID-19 pandemic.*

No	Yes	If yes, please describe.
<input type="checkbox"/>	<input type="checkbox"/>	

- III-6. **Demand trends.**-- Indicate how demand within the United States and outside of the United States (if known) for CSPV products has changed since February 7, 2018, and how you anticipate demand will change in the future. Explain any trends and describe the principal factors that have affected, and that you anticipate will affect, these changes in demand. *Please also note any changes resulting from COVID-19 pandemic.*

Market	Sector	Overall increase	No change	Overall decrease	Fluctuate with no clear trend	Explanation and factors
<b>Demand since February 7, 2018</b>						
Within the United States	Residential	<input type="checkbox"/>	<input type="checkbox"/>	<input type="checkbox"/>	<input type="checkbox"/>	
	Commercial	<input type="checkbox"/>	<input type="checkbox"/>	<input type="checkbox"/>	<input type="checkbox"/>	
	Utility	<input type="checkbox"/>	<input type="checkbox"/>	<input type="checkbox"/>	<input type="checkbox"/>	
	Overall	<input type="checkbox"/>	<input type="checkbox"/>	<input type="checkbox"/>	<input type="checkbox"/>	
Outside the United States	Overall	<input type="checkbox"/>	<input type="checkbox"/>	<input type="checkbox"/>	<input type="checkbox"/>	
<b>Anticipated future demand</b>						
Within the United States	Residential	<input type="checkbox"/>	<input type="checkbox"/>	<input type="checkbox"/>	<input type="checkbox"/>	
	Commercial	<input type="checkbox"/>	<input type="checkbox"/>	<input type="checkbox"/>	<input type="checkbox"/>	
	Utility	<input type="checkbox"/>	<input type="checkbox"/>	<input type="checkbox"/>	<input type="checkbox"/>	
	Overall	<input type="checkbox"/>	<input type="checkbox"/>	<input type="checkbox"/>	<input type="checkbox"/>	
Outside the United States	Overall	<input type="checkbox"/>	<input type="checkbox"/>	<input type="checkbox"/>	<input type="checkbox"/>	

- III-7. **Product changes.**--Have there been any significant changes in the product range, product mix, technology, or marketing of CSPV products since February 7, 2018?

No	Yes	If yes, please describe.
<input type="checkbox"/>	<input type="checkbox"/>	

- III-8. **Conditions of competition.**--Have there been any changes in the business cycles or conditions of competition for CSPV products, including bifacial modules, since February 7, 2018? *Please also note any changes resulting from COVID-19 pandemic.*

No	Yes	If yes, describe.
<input type="checkbox"/>	<input type="checkbox"/>	

- III-9. **Government incentives.**—Have changes in the level or availability of government incentives affected demand for CSPV products since February 7, 2018? In the last column, list or describe the principal incentive programs (e.g., Solar Investment Tax Credit , Section 1603 Program, Renewable Portfolio Standards, or California Solar Initiative) whose change in level or availability has affected demand.

Market	Overall increase	No change	Overall decrease	Fluctuate with no clear trend	Incentives and explanation of demand trends
State and local government incentives	<input type="checkbox"/>	<input type="checkbox"/>	<input type="checkbox"/>	<input type="checkbox"/>	
Federal government incentives	<input type="checkbox"/>	<input type="checkbox"/>	<input type="checkbox"/>	<input type="checkbox"/>	

- III-10. **Conventional energy sources.**—How have changes in the price of electricity generated from U.S. conventional energy sources affected the price of solar generated electricity since February 7, 2018? Explain any trends and describe the principal factors that have affected these changes in price.

Overall price increase	No Change in price	Overall price decrease	Fluctuate with no clear trend	Explanation and factors
<input type="checkbox"/>	<input type="checkbox"/>	<input type="checkbox"/>	<input type="checkbox"/>	

- III-11. **Substitute competition with other solar products.**--Please describe the extent that other solar products (such as thin film products and CSPV products excluded from the safeguard measure) compete with CSPV products, including whether these products are used in the same end uses and market segments.

--

- III-12. **Efforts since implementation of safeguard measures.**—Has your firm made any efforts to increase product availability to your customers, either in terms of the quantity of products available or by increasing your product offerings (e.g., new size ranges, qualities, features, products, etc.) since February 7, 2018?

No	Yes	If yes, describe.
<input type="checkbox"/>	<input type="checkbox"/>	

- III-13. **Other explanations.**--If your firm would like to further explain a response to a question in Part IV that did not provide a narrative response box, please note the question number and the explanation in the space provided below. Please also use this space to highlight any issues your firm had in providing the data in this section, including but not limited to technical issues with the MS Word questionnaire.

--



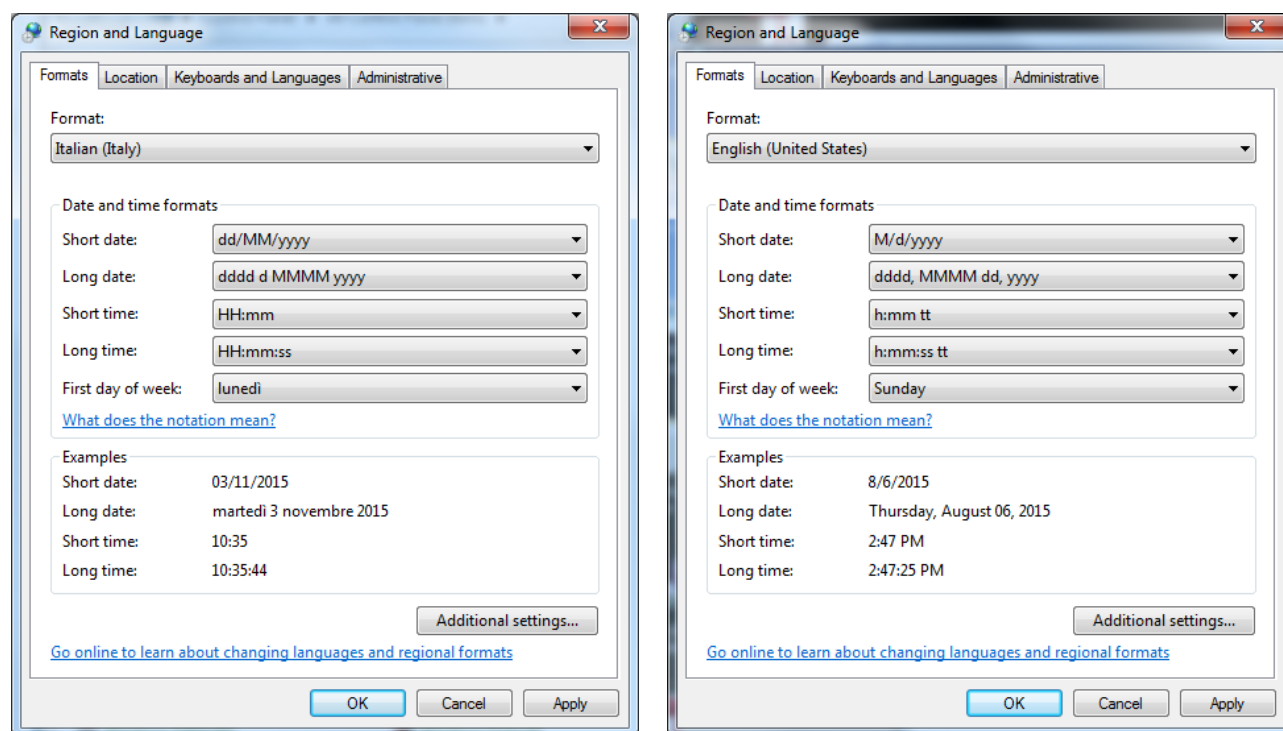
**Correcting Valid number error messages.**--If you are completing a Commission questionnaire in a country that uses periods (".") to delineate multiples of 1000 (e.g., one million would appear as \$1.000.000 instead of as \$1,000,000), you may be unable to enter in numbers greater than 999 in numeric form fields. This issues stem from your computer number formatting setting (e.g., not the MS Word document itself, but the computer from which you are opening up the document). In the United States commas (,) delineate multiples of 1000 and periods (.) delineate fractions less than one. Many EU countries use the reverse where multiples of 1000 are delineated with periods (.) and fractions less than one are delineated with commas (,). The US International Trade Commission's questionnaires are set-up in the United States with the U.S. number formatting. When this formatting interacts with a computer set to EU number formatting, we believe this may cause this issue.

The solution to this data entry issue is to temporarily change your operating system's number formatting to be consistent with the U.S. number formatting system while you complete the questionnaire.

To temporarily change your computer's number settings to U.S. settings, please do the following (for Microsoft Windows Operating system):

- START
- Control Panel
- Region and Language (under Clock, Language, and Region category)
- Format tab
- Change the Format from your existing one (e.g. "Italian (Italy)") to "English (United States)" (see screen shots below)

When you do this the number "twelve million dollars and thirty five cents" would change from \$12.000.000,35 (Italy format) to \$12,000,000.35 (U.S. format), and then there will be no conflict with the questionnaire. When you finish reporting the data then you can close the questionnaire and switch back to Italy settings.



## HOW TO FILE YOUR QUESTIONNAIRE RESPONSE

This questionnaire is available as a “fillable” form in MS Word format on the Commission’s website at:

[https://usitc.gov/investigations/safeguard/2021/crystalline\\_silicon\\_photovoltaic\\_cells\\_whether\\_or/extension.htm](https://usitc.gov/investigations/safeguard/2021/crystalline_silicon_photovoltaic_cells_whether_or/extension.htm)

***Please do not attempt to modify the format or permissions of the questionnaire document.***

Please submit the completed questionnaire using one of the methods noted below. If your firm is unable to complete the MS Word questionnaire or cannot use one of the electronic methods of submission, please contact the Commission for further instructions.

- **Upload via Secure Drop Box.**--Upload the MS Word questionnaire along with a scanned copy of the signed certification page (page 1) through the Commission’s secure upload facility:

**Web address:** <https://dropbox.usitc.gov/oinv/>

**Pin:** **CSPV**

- **E-mail.**--E-mail the MS Word questionnaire to **Jordan Harriman** ([jordan.harriman@usitc.gov](mailto:jordan.harriman@usitc.gov)); include a scanned copy of the signed certification page (page 1). *Submitters are strongly encouraged to encrypt nonpublic documents that are electronically transmitted to the Commission to protect their sensitive information from unauthorized disclosure. The USITC secure drop-box system and the Electronic Document Information System (EDIS) use Federal Information Processing Standards (FIPS) 140-2 cryptographic algorithms to encrypt data in transit. Submitting your nonpublic documents by a means that does not use these encryption algorithms (such as by email) may subject your firm’s nonpublic information to unauthorized disclosure during transmission. If you choose a non-encrypted method of electronic transmission, the Commission warns you that the risk of such possible unauthorized disclosure is assumed by you and not by the Commission.*

**If your firm does not import CSPV products**, please fill out page 1, print, sign, and submit a scanned copy to the Commission.

**Parties to this proceeding.**--If your firm is a party to this proceeding, it is required to serve a copy of the completed questionnaire on parties to the proceeding that are subject to administrative protective order (see 19 C.F.R. § 206.17). A list of such parties may be obtained from the Commission’s Secretary (202-205-1803). A certificate of service must accompany the completed questionnaire you submit (see 19 C.F.R. § 206.17). Service of the questionnaire must be made in paper form.