



United States
Department of
Agriculture

National
Agricultural
Statistics
Service



Livestock Slaughter 2007 Summary

March 2008

Mt An 1-2 -1 (08) a

USDA



Contents

	Page
Summary	1
Red Meat Production: Federally Inspected, Commercial, and Farm, by Type, U.S.	2
Number of Head Slaughtered: Commercial and Farm, by Species, U.S.	3
Federally Inspected Slaughter as Percent of Total Commercial, by Species, U.S.	3
Federally Inspected Average Dressed Weight, by Species and Class,U.S.	5
Commercial Red Meat Production, by State and U.S.	6
Number Slaughtered and Average Live Weights, by Species and Type of Slaughter, U.S.	8
Federally Inspected Number Slaughtered and Percent by Classification, by Species and Class, U.S.	12
Federally Inspected Slaughter by Species and Class, by Region	14
Commercial Cattle Slaughter: Number, Total and Average Live Weight, by State and U.S.	28
Commercial Calf Slaughter: Number, Total and Average Live Weight, by State and U.S.	34
Commercial Hog Slaughter: Number, Total and Average Live Weight, by State and U.S.	40
Commercial Sheep and Lamb Slaughter: Number, Total and Average Live Weight, by State and U.S.	46
Federally Inspected Plants & Head Slaughtered, by Species, State, and U.S.	52
Federally Inspected Plants & Head Slaughtered, by Species and Size Group, U.S.	56
Number of Slaughter Plants, by Type, State and U.S.	58
Federally Inspected Number Slaughtered, by Week, U.S.	59
Reliability Statement.....	68
Types of Plants.....	69
Terms and Definitions.....	69
Information Contacts.....	70

Update Alert

Average live weights and dressed weights were corrected throughout the release. Refer to Terms and Definitions on pages 69 and 70 for definitions of Number of Head, Total Live Weight, Average Live Weight, and Dressed Weight.

Total Red Meat Production Sets All Time Record High in 2007

Total red meat production for the United States totaled 48.8 billion pounds in 2007, 2 percent higher than the previous year. Red meat includes beef, veal, pork, and lamb and mutton. Red meat production in **commercial plants** totaled 48.7 billion pounds. **On-farm** production totaled 135 million pounds.

Beef production totaled 26.5 billion pounds, up 1 percent from the previous year. **Veal production** totaled 146 million pounds, down 6 percent from last year. **Pork production**, at 22.0 billion pounds, was 4 percent above the previous year. **Lamb and mutton production** totaled 188 million pounds, down 1 percent from 2006.

Commercial cattle slaughter during 2007 totaled 34.3 million head, up 2 percent from 2006, with federal inspection comprising 98.4 percent of the total. The average live weight was 1,273 pounds, down 2 pounds from a year ago. **Steers** comprised 51.3 percent of the total federally inspected cattle slaughter, **heifers** 30.3 percent, **dairy cows** 7.4 percent, **other cows** 9.4 percent, and **bulls** 1.6 percent.

Commercial calf slaughter totaled 758,100 head, 7 percent higher than a year ago with 98.2 percent under federal inspection. The average live weight was 305 pounds, down 40 pounds from a year earlier.

Commercial hog slaughter totaled 109.2 million head, 4 percent higher than 2006 with 99.1 percent of the hogs slaughtered under federal inspection. The average live weight was unchanged from last year, at 269 pounds. **Barrows and gilts** comprised 96.5 percent of the total federally inspected hog slaughter.

Commercial sheep and lamb slaughter, at 2.69 million head, was down slightly from the previous year with 93.9 percent comprised by federal inspection. The average live weight was down 1 pound from 2006 to 136 pounds. **Lambs and yearlings** comprised 95.4 percent of the total federally inspected sheep slaughter.

There were 808 plants slaughtering under federal inspection on January 1, 2008 compared with 795 last year. Of these, 626 plants slaughtered at least one head of cattle during 2007 with the 14 largest plants slaughtering 54 percent of the total cattle killed. Hogs were slaughtered at 618 plants, with the 11 largest plants accounting for 51 percent of the total. Likewise, 6 of the 232 plants that slaughtered calves accounted for 63 percent of the total and 4 of the 480 plants that slaughtered sheep or lambs in 2007 comprised 68 percent of the total head.

Iowa, Kansas, Nebraska, and Texas accounted for 51 percent of the United States commercial red meat production in 2007, similar to 2006.

**Red Meat Production: Federally Inspected, Commercial and Farm
by Month and Total, United States, 2007 and 2006 Total ¹**

Month	Beef		Veal		Pork ²		Lamb and Mutton		Total Red Meat ²	
	Fed Insp	Total	Fed Insp	Total	Fed Insp	Total	Fed Insp	Total	Fed Insp	Total
	<i>Million Pounds</i>	<i>Million Pounds</i>	<i>Million Pounds</i>	<i>Million Pounds</i>	<i>Million Pounds</i>	<i>Million Pounds</i>	<i>Million Pounds</i>	<i>Million Pounds</i>	<i>Million Pounds</i>	<i>Million Pounds</i>
Com'l ³										
Jan 2007	2,131.7	2,166.0	14.0	14.3	1,884.3	1,898.5	14.5	15.0	4,044.6	4,093.8
Feb	1,924.2	1,952.5	11.9	12.1	1,623.2	1,636.3	13.9	14.4	3,573.2	3,615.4
Mar	2,088.5	2,118.2	13.3	13.5	1,846.5	1,861.0	19.0	19.6	3,967.3	4,012.4
Apr	1,988.1	2,015.0	11.6	11.9	1,698.0	1,711.5	14.3	15.0	3,712.0	3,753.4
May	2,257.2	2,285.1	12.1	12.3	1,749.3	1,762.6	14.9	15.5	4,033.5	4,075.5
Jun	2,321.8	2,348.5	11.0	11.2	1,641.2	1,654.1	13.1	13.7	3,987.1	4,027.5
Jul	2,228.6	2,256.7	10.5	10.7	1,644.9	1,659.5	12.8	13.5	3,896.8	3,940.4
Aug	2,421.6	2,450.6	10.1	10.3	1,833.6	1,850.0	13.9	14.8	4,279.2	4,325.7
Sep	2,066.7	2,094.7	9.1	9.4	1,731.1	1,746.0	12.9	13.6	3,819.7	3,863.6
Oct	2,407.3	2,443.0	10.7	11.1	2,127.9	2,145.1	15.5	16.4	4,561.4	4,615.6
Nov	2,201.5	2,228.8	9.7	10.1	2,030.7	2,045.2	15.4	16.1	4,257.4	4,300.2
Dec	2,032.7	2,061.4	10.2	10.4	1,957.4	1,972.7	14.5	15.4	4,014.8	4,059.9
2007 Total Com'l	26,070.0	26,420.8	134.3	137.2	21,768.0	21,942.6	174.7	183.1	48,146.9	48,683.8
Farm		102.2		8.3		19.4		5.1		134.9
Total		26,522.9		145.5		21,962.0		188.2		48,818.7
2006 Total Com'l	25,791.8	26,151.8	143.8	146.6	20,877.2	21,053.8	177.3	185.2	46,990.0	47,537.4
Farm		104.4		8.6		19.6		4.6		137.2
Total		26,256.2		155.2		21,073.3		189.8		47,674.5

¹ Totals may not add due to rounding.

² Excludes lard and rendered pork fat.

³ Based on packers' dressed weight and excludes farm slaughter.

**Number of Head Slaughtered: By Species,
Commercial and Farm, United States, 2006-07**

Species	Total Commercial		Farm ¹		Total Slaughter	
	2007	2006	2007	2006	2007	2006
	<i>1000 Head</i>	<i>1000 Head</i>	<i>1000 Head</i>	<i>1000 Head</i>	<i>1000 Head</i>	<i>1000 Head</i>
Cattle	34,264.0	33,698.3	150.0	150.2	34,414.0	33,848.5
Calves	758.1	711.3	37.0	36.8	795.1	748.1
Hogs	109,171.6	104,736.6	105.0	105.7	109,276.6	104,842.3
Sheep	2,693.7	2,698.5	75.0	67.7	2,768.7	2,766.2

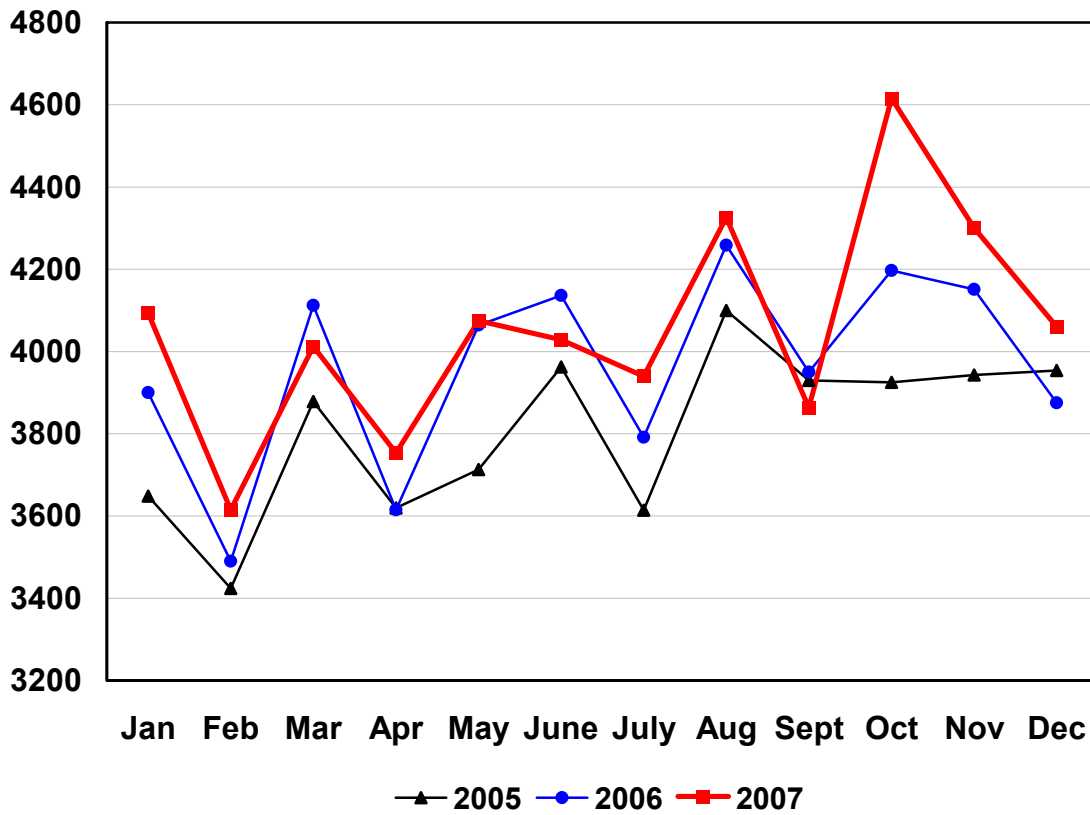
¹ Preliminary

**Federally Inspected Slaughter: Percent of Total Commercial
Slaughter by Species, Month, and Total, United States, 2007 and 2006 Total**

Month	Species			
	Cattle	Calves	Hogs	Sheep
	<i>Percent</i>	<i>Percent</i>	<i>Percent</i>	<i>Percent</i>
Jan 2007	98.1	98.6	99.1	95.1
Feb	98.3	98.3	99.0	94.9
Mar	98.4	98.4	99.1	95.6
Apr	98.5	98.2	99.1	93.6
May	98.6	98.5	99.1	93.9
Jun	98.7	98.5	99.0	93.9
Jul	98.5	98.7	99.0	92.8
Aug	98.6	98.6	98.9	92.9
Sep	98.4	97.9	99.0	93.3
Oct	98.2	97.6	99.0	93.5
Nov	98.5	97.6	99.2	94.0
Dec	98.3	98.1	99.1	92.7
2007 Total	98.4	98.2	99.1	93.9
2006 Total	98.4	98.2	99.0	94.4

U.S. Monthly Commercial Red Meat Production

Million Pounds



**Livestock Slaughter: Average Dressed Weight, Federal Inspection
by Classification and Month, United States, 2007 and 2006 Annual ¹**

Classification	Jan	Feb	Mar	Apr	May	Jun	Jul
	<i>Pounds</i>	<i>Pounds</i>	<i>Pounds</i>	<i>Pounds</i>	<i>Pounds</i>	<i>Pounds</i>	<i>Pounds</i>
Cattle	779	767	763	750	753	767	782
Steers ²	831	816	808	796	800	816	836
Heifers ²	772	760	752	733	730	743	757
Cows ²	630	631	635	623	618	617	613
Bulls ²	909	905	920	904	905	917	900
Calves & Vealers	194	183	192	209	210	183	172
Hogs	203	202	203	203	202	200	198
Barrows & Gilts ³	200	199	199	199	198	196	194
Sows ³	308	307	308	310	309	310	309
Boars ³	214	206	215	213	213	216	218
Sheep	71	72	71	71	73	70	67
Mature Sheep ⁴	65	66	68	67	67	69	67
Lambs & Yrlngs ⁴	71	72	71	71	73	70	67
	Aug	Sep	Oct	Nov	Dec	2007 Average	2006 Average
	<i>Pounds</i>	<i>Pounds</i>	<i>Pounds</i>	<i>Pounds</i>	<i>Pounds</i>	<i>Pounds</i>	<i>Pounds</i>
Cattle	787	791	793	793	784	776	781
Steers ²	845	853	858	858	844	830	833
Heifers ²	766	780	792	801	784	764	767
Cows ²	608	606	607	603	613	617	622
Bulls ²	890	871	865	865	871	893	914
Calves & Vealers	159	168	170	171	172	182	207
Hogs	197	200	202	204	204	202	202
Barrows & Gilts ³	194	196	199	201	201	198	198
Sows ³	306	306	306	307	304	308	309
Boars ³	213	210	215	214	214	213	227
Sheep	66	65	67	69	69	69	70
Mature Sheep ⁴	68	68	67	66	67	67	67
Lambs & Yrlngs ⁴	66	65	67	69	69	69	70

¹ Species totals and classification reported by food inspectors, Inspection Operations, FSIS.

² Included in cattle average dressed weight.

³ Included in hogs average dressed weight.

⁴ Included in sheep average dressed weight.

**Commercial Red Meat Production: Number of Pounds by Month, State,
and United States, 2007 and 2006 Total ¹**

State	Jan	Feb	Mar	Apr	May	Jun	Jul
	<i>Million Pounds</i>	<i>Million Pounds</i>	<i>Million Pounds</i>	<i>Million Pounds</i>	<i>Million Pounds</i>	<i>Million Pounds</i>	<i>Million Pounds</i>
AL	2.8	2.2	2.7	2.4	2.5	2.3	2.2
AK	0.1						
AZ	33.5	31.1	33.7	30.4	33.1	35.8	36.2
AR	4.4	4.2	4.5	4.1	4.4	4.8	4.5
CA	148.2	131.7	142.2	136.3	141.9	142.2	133.4
CO	147.7	141.5	148.1	133.7	158.1	172.4	161.6
DE-MD	3.8	3.1	3.5	2.8	3.4	3.2	3.0
FL	6.7	6.2	7.0	7.1	7.9	7.1	6.7
GA	15.8	13.3	12.6	13.3	15.0	13.0	12.9
HI	0.8	0.7	0.8	0.8	0.9	0.9	0.8
ID	4.1	7.7	15.5	15.5	16.6	16.6	16.0
IL	239.5	203.4	245.2	218.3	221.1	215.4	222.7
IN	138.5	114.6	133.2	122.1	124.8	118.0	121.3
IA	583.6	486.7	552.3	512.3	525.8	492.8	490.0
KS	502.4	453.0	504.4	500.7	560.4	573.4	546.4
KY	46.2	38.2	47.7	46.6	47.4	43.5	45.4
LA	0.7	0.8	0.9	0.7	0.5	0.5	0.5
MI	41.8	36.8	40.8	35.4	43.7	45.1	42.2
MN	223.1	188.1	210.2	195.5	201.5	191.4	187.5
MS	26.4	22.2	19.2	1.1	1.2	1.1	1.0
MO	122.5	108.8	116.1	119.9	124.1	119.8	119.4
MT	1.5	1.5	1.3	1.0	1.1	1.2	1.2
NE	604.7	537.0	550.3	517.6	606.7	632.6	617.1
NV	0.1	0.1	0.1	0.1	0.2	0.1	0.1
N ENG ²	1.1	0.8	0.9	0.9	1.1	1.1	1.0
NJ	5.0	4.3	5.0	4.6	4.9	4.3	4.2
NM	0.6	0.5	0.5	0.4	0.4	0.4	0.4
NY	3.2	2.4	2.8	2.6	2.9	2.5	2.7
NC	205.6	181.0	190.5	175.2	188.5	173.8	178.6
ND	3.0	2.5	2.6	2.6	2.8	2.5	2.4
OH	25.7	21.5	25.0	23.2	23.7	22.6	23.4
OK	87.2	80.5	96.4	84.0	86.5	84.4	78.1
OR	4.6	4.2	4.5	4.3	4.7	4.6	4.7
PA	110.0	96.9	110.4	105.9	108.9	103.1	104.1
SC	21.4	19.5	21.5	20.7	22.6	20.7	20.0
SD	81.9	70.5	84.4	77.6	78.8	74.9	76.3
TN	18.1	16.0	18.3	14.6	16.3	14.5	16.3
TX	354.6	331.9	383.3	361.1	419.4	410.1	390.9
UT	34.5	34.2	39.4	35.0	34.7	41.0	38.9
VA	37.1	34.8	38.8	36.4	38.3	38.6	35.3
WA	69.6	70.7	76.0	71.0	73.8	72.6	76.2
WV	0.6	0.4	0.5	0.4	0.3	0.3	0.5
WI	130.4	109.3	119.2	115.0	124.0	122.1	113.9
WY	0.6	0.6	0.5	0.5	0.5	0.4	0.5
US ³	4,093.8	3,615.4	4,012.4	3,753.4	4,075.5	4,027.5	3,940.4
PR	2.6	2.4	2.6	2.2	2.5	2.4	2.5

See footnote(s) at end of table.

--continued

**Commercial Red Meat Production: Number of Pounds by Month, State,
and United States, 2007 and 2006 Total ¹ (continued)**

State	Aug	Sep	Oct	Nov	Dec	2007 Total	2006 Total
	<i>Million Pounds</i>	<i>Million Pounds</i>	<i>Million Pounds</i>	<i>Million Pounds</i>	<i>Million Pounds</i>	<i>Million Pounds</i>	<i>Million Pounds</i>
AL	2.1	1.9	2.3	2.1	2.0	27.6	30.6
AK	0.1		0.1	0.1		0.5	0.7
AZ	35.6	34.8	36.1	34.1	31.5	405.9	386.5
AR	5.1	5.0	6.0	5.6	5.7	58.2	54.3
CA	144.9	122.1	145.8	140.7	142.9	1,672.4	1,607.6
CO	167.6	157.7	185.7	165.5	147.8	1,887.3	1,828.6
DE-MD	3.2	2.6	3.5	3.1	2.9	37.9	39.4
FL	7.3	7.2	8.2	8.2	7.2	86.7	66.7
GA	14.5	12.8	14.2	13.5	12.5	163.4	147.9
HI	0.9	0.8	0.9	0.8	0.8	10.0	10.1
ID	16.3	15.8	18.3	18.8	17.8	179.0	225.4
IL	263.4	232.0	278.3	268.1	254.1	2,861.5	2,737.4
IN	131.7	117.3	153.4	147.0	142.4	1,564.3	1,500.5
IA	552.6	532.6	651.8	625.8	591.8	6,597.9	6,539.7
KS	589.4	477.5	555.3	505.6	456.3	6,224.7	6,134.5
KY	45.6	44.3	55.3	51.8	50.8	563.0	499.1
LA	0.6	0.5	0.6	0.6	0.5	7.5	8.9
MI	46.3	39.1	42.3	42.1	40.0	495.5	455.5
MN	201.2	186.6	230.9	217.8	208.0	2,441.9	2,387.8
MS	1.3	1.2	1.5	1.2	1.2	78.7	290.1
MO	124.5	122.1	144.4	139.6	139.1	1,500.2	948.2
MT	1.3	1.2	1.7	1.5	1.6	16.2	16.2
NE	680.3	586.4	680.3	625.9	581.5	7,220.2	7,226.8
NV	0.1	0.1	0.1	0.1	0.1	1.0	0.8
N ENG ²	1.1	1.2	1.4	1.3	1.0	12.8	12.9
NJ	4.4	3.9	4.1	3.7	4.1	52.7	51.9
NM	0.5	0.3	0.3	0.3	0.3	4.9	6.1
NY	3.0	2.7	3.4	2.9	2.7	33.6	35.1
NC	206.1	183.8	229.8	217.0	204.1	2,334.0	2,292.5
ND	2.4	2.1	2.7	2.1	2.3	29.8	32.9
OH	25.8	21.7	27.3	24.0	25.2	289.3	288.9
OK	82.6	80.8	94.8	89.4	91.4	1,036.0	1,050.0
OR	5.4	4.7	5.5	4.8	4.6	56.6	50.7
PA	111.8	101.0	119.5	108.6	108.3	1,288.3	1,222.6
SC	21.4	19.9	23.2	22.1	21.1	254.3	248.1
SD	93.6	86.0	106.1	101.6	95.6	1,027.1	947.5
TN	19.4	19.3	22.5	22.3	20.0	217.7	211.0
TX	425.8	369.9	452.5	404.7	372.0	4,676.2	4,926.9
UT	43.9	42.9	49.4	43.4	38.0	475.4	502.0
VA	38.3	42.0	50.3	44.0	45.7	479.6	410.6
WA	81.0	72.6	78.2	72.5	67.6	881.6	756.7
WV	0.5	0.6	1.0	0.8	0.7	6.7	5.9
WI	122.2	106.2	126.3	114.8	116.1	1,419.4	1,335.5
WY	0.9	0.5	0.3	0.4	0.5	6.1	6.2
US ³	4,325.7	3,863.6	4,615.6	4,300.2	4,059.9	48,683.8	47,537.4
PR	2.9	2.6	3.3	2.8	2.8	31.7	28.9

¹ Based on packers' dressed weights, excluding farm slaughter. Includes total beef, veal, pork, and lamb and mutton.

² N ENG includes CT, ME, MA, NH, RI, and VT.

³ Totals based on unrounded data and may not equal sum of parts. Puerto Rico is not included in US totals.

**Livestock Slaughter: Number of Head Slaughtered and Average Live Weight
by Species and Month, United States, 2007 and 2006 Total ¹**

Species	Unit	Jan	Feb	Mar
Cattle				
Number				
Fed. Insp.	Thou	2,748.0	2,517.6	2,747.4
Other	Thou	52.2	43.6	45.6
Commercial ³	Thou	2,800.3	2,561.2	2,793.0
Live Weight/Head				
Fed. Insp.	Lbs	1,292	1,276	1,261
Other	Lbs	1,159	1,152	1,149
Commercial	Lbs	1,290	1,274	1,260
Calves				
Number				
Fed. Insp.	Thou	73.3	65.6	69.6
Other	Thou	1.1	1.1	1.1
Commercial ³	Thou	74.3	66.7	70.7
Live Weight/Head				
Fed. Insp.	Lbs	323	306	319
Other	Lbs	387	403	418
Commercial	Lbs	324	308	321
Hogs				
Number				
Fed. Insp.	Thou	9,281.4	8,039.8	9,118.9
Other	Thou	83.6	77.5	82.7
Commercial ³	Thou	9,365.0	8,117.3	9,201.7
Live Weight/Head				
Fed. Insp.	Lbs	271	270	271
Other	Lbs	235	234	241
Commercial	Lbs	271	269	270
Sheep and Lambs				
Number				
Fed. Insp.	Thou	204.2	194.3	267.2
Other	Thou	10.6	10.4	12.4
Commercial ³	Thou	214.8	204.7	279.5
Live Weight/Head				
Fed. Insp.	Lbs	141	143	142
Other	Lbs	108	96	104
Commercial	Lbs	140	140	140
Goats				
Number				
Fed. Insp.	Thou	45.8	40.8	51.0
Other	Thou	12.1	14.0	15.3
Commercial ³	Thou	57.9	54.7	66.4
Live Weight/Head				
Fed. Insp.	Lbs	63	63	60
Other	Lbs	66	56	51
Commercial	Lbs	63	61	58
Bison				
Number				
Fed. Insp.	Thou	4.2	3.3	4.3
Other	Thou	1.8	1.7	1.7
Commercial ³	Thou	6.0	5.0	6.0

See footnote(s) at end of table.

--continued

**Livestock Slaughter: Number of Head Slaughtered and Average Live Weight
by Species and Month, United States, 2007 and 2006 Total ¹ (continued)**

Species	Unit	Apr	May	Jun
Cattle				
Number				
Fed. Insp.	Thou	2,659.7	3,008.3	3,035.0
Other	Thou	41.7	43.1	41.5
Commercial ³	Thou	2,701.4	3,051.4	3,076.5
Live Weight/Head				
Fed. Insp.	Lbs	1,236	1,234	1,251
Other	Lbs	1,136	1,136	1,128
Commercial	Lbs	1,235	1,232	1,250
Calves				
Number				
Fed. Insp.	Thou	55.8	58.0	60.3
Other	Thou	1.1	0.9	0.9
Commercial ³	Thou	56.9	58.9	61.3
Live Weight/Head				
Fed. Insp.	Lbs	346	348	306
Other	Lbs	419	403	359
Commercial	Lbs	348	349	307
Hogs				
Number				
Fed. Insp.	Thou	8,388.8	8,680.4	8,217.9
Other	Thou	78.1	81.1	79.3
Commercial ³	Thou	8,466.9	8,761.5	8,297.2
Live Weight/Head				
Fed. Insp.	Lbs	270	269	267
Other	Lbs	239	226	226
Commercial	Lbs	270	269	267
Sheep and Lambs				
Number				
Fed. Insp.	Thou	202.6	205.1	188.3
Other	Thou	14.0	13.4	12.3
Commercial ³	Thou	216.6	218.5	200.6
Live Weight/Head				
Fed. Insp.	Lbs	141	145	139
Other	Lbs	104	96	100
Commercial	Lbs	138	142	137
Goats				
Number				
Fed. Insp.	Thou	51.8	55.4	53.2
Other	Thou	15.4	17.1	16.8
Commercial ³	Thou	67.2	72.5	70.1
Live Weight/Head				
Fed. Insp.	Lbs	60	61	61
Other	Lbs	70	70	52
Commercial	Lbs	62	63	59
Bison				
Number				
Fed. Insp.	Thou	4.0	5.0	4.3
Other	Thou	1.5	1.3	1.3
Commercial ³	Thou	5.5	6.2	5.6

See footnote(s) at end of table.

--continued

**Livestock Slaughter: Number of Head Slaughtered and Average Live Weight
by Species and Month, United States, 2007 and 2006 Total ¹ (continued)**

Species	Unit	Jul	Aug	Sep	Oct
Cattle					
Number					
Fed. Insp.	Thou	2,859.9	3,087.9	2,621.2	3,045.8
Other	Thou	43.2	44.2	43.4	56.1
Commercial ³	Thou	2,903.1	3,132.1	2,664.6	3,102.0
Live Weight/Head					
Fed. Insp.	Lbs	1,271	1,281	1,292	1,303
Other	Lbs	1,137	1,147	1,138	1,131
Commercial	Lbs	1,269	1,279	1,290	1,300
Calves					
Number					
Fed. Insp.	Thou	61.7	64.5	54.8	63.7
Other	Thou	0.8	0.9	1.2	1.6
Commercial ³	Thou	62.5	65.5	56.0	65.3
Live Weight/Head					
Fed. Insp.	Lbs	288	267	281	285
Other	Lbs	384	386	390	400
Commercial	Lbs	289	268	284	288
Hogs					
Number					
Fed. Insp.	Thou	8,311.8	9,295.6	8,683.4	10,555.2
Other	Thou	87.2	98.9	89.4	101.4
Commercial ³	Thou	8,399.0	9,394.5	8,772.8	10,656.6
Live Weight/Head					
Fed. Insp.	Lbs	265	264	267	270
Other	Lbs	233	230	233	238
Commercial	Lbs	264	263	266	270
Sheep and Lambs					
Number					
Fed. Insp.	Thou	191.2	212.0	196.7	232.2
Other	Thou	14.8	16.1	14.0	16.2
Commercial ³	Thou	206.0	228.1	210.7	248.4
Live Weight/Head					
Fed. Insp.	Lbs	133	130	130	134
Other	Lbs	106	111	106	109
Commercial	Lbs	131	129	128	132
Goats					
Number					
Fed. Insp.	Thou	52.9	55.6	54.2	60.8
Other	Thou	15.5	16.2	16.6	16.8
Commercial ³	Thou	68.4	71.8	70.9	77.6
Live Weight/Head					
Fed. Insp.	Lbs	61	62	61	62
Other	Lbs	52	52	48	47
Commercial	Lbs	59	59	58	59
Bison					
Number					
Fed. Insp.	Thou	4.4	4.6	4.4	3.7
Other	Thou	1.2	1.2	1.0	1.5
Commercial ³	Thou	5.6	5.8	5.4	5.2

See footnote(s) at end of table.

--continued

**Livestock Slaughter: Number of Head Slaughtered and Average Live Weight
by Species and Month, United States, 2007 and 2006 Total ¹ (continued)**

Species	Unit	Nov	Dec	2007 Total ²	2006 Total ²
Cattle					
Number					
Fed. Insp.	Thou	2,787.3	2,602.5	33,720.7	33,145.0
Other	Thou	43.4	45.4	543.3	553.3
Commercial ³	Thou	2,830.7	2,647.9	34,264.0	33,698.3
Live Weight/Head					
Fed. Insp.	Lbs	1,307	1,305	1,275	1,277
Other	Lbs	1,117	1,132	1,139	1,141
Commercial	Lbs	1,304	1,302	1,273	1,275
Calves					
Number					
Fed. Insp.	Thou	57.5	59.9	744.8	698.7
Other	Thou	1.4	1.1	13.3	12.6
Commercial ³	Thou	58.9	61.0	758.1	711.3
Live Weight/Head					
Fed. Insp.	Lbs	287	287	304	344
Other	Lbs	430	386	399	406
Commercial	Lbs	291	288	305	345
Hogs					
Number					
Fed. Insp.	Thou	9,964.4	9,600.6	108,138.2	103,688.5
Other	Thou	84.8	89.3	1,033.4	1,048.1
Commercial ³	Thou	10,049.2	9,689.9	109,171.6	104,736.6
Live Weight/Head					
Fed. Insp.	Lbs	273	272	269	269
Other	Lbs	237	236	234	232
Commercial	Lbs	272	272	269	269
Sheep and Lambs					
Number					
Fed. Insp.	Thou	222.5	212.2	2,528.6	2,547.0
Other	Thou	14.1	16.8	165.1	151.4
Commercial ³	Thou	236.7	229.0	2,693.7	2,698.5
Live Weight/Head					
Fed. Insp.	Lbs	138	137	138	138
Other	Lbs	103	104	104	105
Commercial	Lbs	136	135	136	137
Goats					
Number					
Fed. Insp.	Thou	55.8	61.9	639.4	584.3
Other	Thou	15.0	17.2	187.9	165.1
Commercial ³	Thou	70.7	79.1	827.3	749.4
Live Weight/Head					
Fed. Insp.	Lbs	62	62	61	62
Other	Lbs	51	61	56	61
Commercial	Lbs	59	62	60	62
Bison					
Number					
Fed. Insp.	Thou	4.2	3.6	50.1	42.5
Other	Thou	1.4	1.5	16.9	15.9
Commercial ³	Thou	5.7	5.2	67.0	58.5

¹ Excludes slaughter on farms.

² Totals based on unrounded data.

³ Commercial may not equal the sum of the parts due to rounding.

**Livestock Slaughtered Under Federal Inspection: Number
of Head and Percent by Classification and Month,
United States, 2007 and 2006 Total**

Classification	Months						
	Jan	Feb	Mar	Apr	May	Jun	Jul
	<i>1,000 Head</i>	<i>1,000 Head</i>	<i>1,000 Head</i>	<i>1,000 Head</i>	<i>1,000 Head</i>	<i>1,000 Head</i>	<i>1,000 Head</i>
Cattle							
Steers	1,384.9	1,235.8	1,393.2	1,387.4	1,601.3	1,620.8	1,556.0
Heifers	818.8	803.3	820.2	768.2	878.2	927.1	842.2
All Cows	502.4	443.9	488.4	460.1	477.2	438.4	416.5
Dairy Cows	227.7	201.9	230.4	213.4	191.3	173.8	180.2
Other Cows	274.7	242.0	258.0	246.6	285.9	264.6	236.3
Bulls	41.9	34.6	45.6	44.0	51.6	48.8	45.2
Total ¹	2,748.0	2,517.6	2,747.4	2,659.7	3,008.3	3,035.0	2,859.9
Calves & Vealers	73.3	65.6	69.6	55.8	58.0	60.3	61.7
Hogs							
Barrows & Gilts	8,954.4	7,757.1	8,790.1	8,087.5	8,355.4	7,912.0	8,007.7
Sows	285.9	247.6	284.2	260.9	283.0	266.1	266.3
Boars	41.1	35.1	44.7	40.3	41.9	39.8	37.8
Total ¹	9,281.4	8,039.8	9,118.9	8,388.8	8,680.4	8,217.9	8,311.8
Sheep							
Mature Sheep	9.1	7.7	9.1	9.7	10.8	9.1	9.4
Lambs & Yearlings	195.1	186.6	258.0	193.0	194.3	179.2	181.8
Total ¹	204.2	194.3	267.2	202.6	205.1	188.3	191.2
	Percent of Total						
Cattle							
Steers	50.4	49.1	50.7	52.2	53.2	53.4	54.4
Heifers	29.8	31.9	29.9	28.9	29.2	30.5	29.4
All Cows	18.3	17.6	17.8	17.3	15.9	14.4	14.6
Dairy Cows	8.3	8.0	8.4	8.0	6.4	5.7	6.3
Other Cows	10.0	9.6	9.4	9.3	9.5	8.7	8.3
Bulls	1.5	1.4	1.7	1.7	1.7	1.6	1.6
Total ¹	100.0	100.0	100.0	100.0	100.0	100.0	100.0
Calves & Vealers	100.0	100.0	100.0	100.0	100.0	100.0	100.0
Hogs							
Barrows & Gilts	96.5	96.5	96.4	96.4	96.3	96.3	96.3
Sows	3.1	3.1	3.1	3.1	3.3	3.2	3.2
Boars	0.4	0.4	0.5	0.5	0.5	0.5	0.5
Total ¹	100.0	100.0	100.0	100.0	100.0	100.0	100.0
Sheep							
Mature Sheep	4.4	4.0	3.4	4.8	5.2	4.8	4.9
Lambs & Yearlings	95.6	96.0	96.6	95.2	94.8	95.2	95.1
Total ¹	100.0	100.0	100.0	100.0	100.0	100.0	100.0

See footnote(s) at end of table.

--continued

**Livestock Slaughtered Under Federal Inspection: Number
of Head and Percent by Classification and Month,
United States, 2007 and 2006 Total (continued)**

Classification	Months					2007 Total ¹	2006 Total ¹
	Aug	Sep	Oct	Nov	Dec		
	<i>1,000 Head</i>	<i>1,000 Head</i>	<i>1,000 Head</i>	<i>1,000 Head</i>	<i>1,000 Head</i>	<i>1,000 Head</i>	<i>1,000 Head</i>
Cattle							
Steers	1,645.7	1,359.8	1,480.7	1,340.3	1,279.3	17,285.2	17,478.3
Heifers	924.5	782.4	969.7	873.2	799.1	10,206.7	9,819.5
All Cows	465.4	431.6	541.1	527.0	482.9	5,674.9	5,336.3
Dairy Cows	211.9	199.6	244.6	217.4	204.7	2,496.9	2,353.5
Other Cows	253.5	231.9	296.5	309.6	278.3	3,178.0	2,982.7
Bulls	52.4	47.5	54.3	46.8	41.2	553.9	511.0
Total ¹	3,087.9	2,621.2	3,045.8	2,787.3	2,602.5	33,720.7	33,145.0
Calves & Vealers	64.5	54.8	63.7	57.5	59.9	744.8	698.7
Hogs							
Barrows & Gilts	8,960.2	8,390.2	10,202.6	9,633.7	9,300.8	104,351.7	100,113.3
Sows	293.3	256.9	311.1	289.5	264.2	3,309.2	3,227.1
Boars	42.1	36.3	41.5	41.2	35.5	477.3	348.1
Total ¹	9,295.6	8,683.4	10,555.2	9,964.4	9,600.6	108,138.2	103,688.5
Sheep							
Mature Sheep	10.2	9.1	11.0	9.6	10.9	115.6	118.1
Lambs & Yearlings	201.8	187.6	221.3	213.0	201.3	2,413.0	2,429.0
Total ¹	212.0	196.7	232.2	222.5	212.2	2,528.6	2,547.0
	Percent of Total						
Cattle							
Steers	53.3	51.9	48.6	48.1	49.2	51.3	52.7
Heifers	29.9	29.8	31.8	31.3	30.7	30.3	29.6
All Cows	15.1	16.5	17.8	18.9	18.6	16.8	16.1
Dairy Cows	6.9	7.6	8.0	7.8	7.9	7.4	7.1
Other Cows	8.2	8.8	9.7	11.1	10.7	9.4	9.0
Bulls	1.7	1.8	1.8	1.7	1.6	1.6	1.5
Total ¹	100.0	100.0	100.0	100.0	100.0	100.0	100.0
Calves & Vealers	100.0	100.0	100.0	100.0	100.0	100.0	100.0
Hogs							
Barrows & Gilts	96.4	96.6	96.7	96.7	96.9	96.5	96.6
Sows	3.2	3.0	2.9	2.9	2.8	3.1	3.1
Boars	0.5	0.4	0.4	0.4	0.4	0.4	0.3
Total ¹	100.0	100.0	100.0	100.0	100.0	100.0	100.0
Sheep							
Mature Sheep	4.8	4.6	4.7	4.3	5.2	4.6	4.6
Lambs & Yearlings	95.2	95.4	95.3	95.7	94.8	95.4	95.4
Total ¹	100.0	100.0	100.0	100.0	100.0	100.0	100.0

¹ Totals and percentages based on unrounded data and may not equal sum of classes.

**Cattle Slaughter: Number of Head Federally Inspected by Region,
Classification, and Month, 2007 and 2006 Total ¹**

Standard Federal Regions ²	Jan	Feb	Mar	Apr	May	Jun	Jul
	<i>1,000 Head</i>	<i>1,000 Head</i>	<i>1,000 Head</i>	<i>1,000 Head</i>	<i>1,000 Head</i>	<i>1,000 Head</i>	<i>1,000 Head</i>
1							
Steers	0.5	0.4	0.3	0.3	0.4	0.4	0.4
Heifers	0.2	0.1	0.1	0.1	0.2	0.1	0.1
All Cows							
Dairy Cows							
Other Cows							
Bulls							
Total Cattle ³	1.0	0.7	0.8	0.7	1.0	0.9	0.8
2							
Steers	1.8	1.3	1.6	1.5	1.7	1.6	1.6
Heifers	0.3	0.3	0.3	0.2	0.3	0.3	0.3
All Cows	2.4	1.9	2.3	2.4	2.5	2.0	2.2
Dairy Cows	2.0	1.7	2.1	2.2	2.3	1.8	1.9
Other Cows	0.3	0.2	0.2	0.1	0.2	0.2	0.4
Bulls	0.3	0.2	0.2	0.3	0.4	0.3	0.3
Total Cattle ³	4.8	3.7	4.5	4.4	4.9	4.2	4.4
3							
Steers	35.9	31.0	34.5	37.9	37.8	40.4	42.2
Heifers	8.7	8.8	5.9	5.1	8.3	8.0	5.5
All Cows	36.4	30.0	37.3	34.8	32.3	31.8	32.6
Dairy Cows	29.0	23.9	29.8	27.6	25.5	24.9	25.6
Other Cows	7.5	6.1	7.5	7.2	6.9	7.0	6.9
Bulls	2.0	1.5	2.1	2.5	3.2	2.7	2.8
Total Cattle ³	83.0	71.4	79.8	80.3	81.7	83.0	83.1
4							
Steers	1.2	1.2	1.3	1.0	1.1	1.0	1.0
Heifers	0.4	0.3	0.3	0.3	0.4	0.4	0.3
All Cows	63.5	55.5	56.4	56.7	64.5	59.4	56.8
Dairy Cows	15.6	12.9	12.7	11.8	10.5	9.4	9.3
Other Cows	47.9	42.6	43.6	44.9	54.0	49.9	47.4
Bulls	8.1	6.5	8.5	8.5	9.8	9.1	8.2
Total Cattle ³	73.2	63.4	66.5	66.6	75.8	69.8	66.3
5							
Steers	154.2	132.9	142.4	134.8	153.3	163.0	150.8
Heifers	40.4	35.0	37.0	34.3	34.0	39.5	39.5
All Cows	149.4	123.0	141.9	132.7	134.7	123.2	118.0
Dairy Cows	78.6	67.5	77.6	70.3	66.5	62.3	63.1
Other Cows	70.8	55.5	64.3	62.4	68.2	61.0	54.8
Bulls	7.3	5.4	7.7	6.8	8.6	8.2	7.9
Total Cattle ³	351.3	296.3	329.0	308.6	330.6	334.0	316.1

See footnote(s) at end of table.

--continued

**Cattle Slaughter: Number of Head Federally Inspected by Region,
Classification, and Month, 2007 and 2006 Total ¹ (continued)**

Standard Federal Regions ²	Aug	Sep	Oct	Nov	Dec	2007 Total ³	2006 Total ³
	<i>1,000 Head</i>	<i>1,000 Head</i>	<i>1,000 Head</i>	<i>1,000 Head</i>	<i>1,000 Head</i>	<i>1,000 Head</i>	<i>1,000 Head</i>
1							
Steers	0.5	0.5	0.7	0.6	0.5	5.5	4.9
Heifers	0.1	0.2	0.2	0.2	0.1	1.7	2.2
All Cows							
Dairy Cows							
Other Cows							
Bulls							
Total Cattle ³	0.9	1.0	1.2	1.0	0.8	11.0	11.1
2							
Steers	1.8	1.7	2.2	1.8	1.6	20.3	18.9
Heifers	0.2	0.3	0.4	0.3	0.3	3.4	3.6
All Cows	2.5	2.4	2.8	2.3	2.0	27.7	29.4
Dairy Cows	2.2	2.1	2.3	1.9	1.6	24.2	27.5
Other Cows	0.4	0.3	0.5	0.4	0.4	3.5	1.9
Bulls	0.4	0.4	0.4	0.3	0.5	3.9	3.4
Total Cattle ³	5.0	4.7	5.8	4.7	4.3	55.3	55.3
3							
Steers	44.0	35.7	37.6	34.7	33.6	445.3	402.0
Heifers	6.3	5.0	5.1	5.5	6.1	78.3	71.9
All Cows	36.2	35.8	46.0	37.3	34.3	424.9	386.7
Dairy Cows	28.7	28.1	36.2	29.5	27.1	335.8	309.8
Other Cows	7.6	7.7	9.8	7.8	7.3	89.2	76.9
Bulls	2.9	2.9	3.6	2.4	1.9	30.7	27.8
Total Cattle ³	89.5	79.5	92.2	79.9	75.9	979.2	888.4
4							
Steers	1.0	1.0	1.4	1.0	1.1	13.2	11.5
Heifers	0.3	0.3	0.5	0.4	0.4	4.3	4.2
All Cows	64.0	57.7	64.8	60.6	55.1	714.8	627.8
Dairy Cows	11.1	9.9	10.2	10.9	10.4	134.9	136.2
Other Cows	52.9	47.9	54.6	49.7	44.6	580.0	491.6
Bulls	9.8	9.7	10.1	8.9	7.9	105.1	90.9
Total Cattle ³	75.1	68.7	76.7	70.9	64.5	837.3	734.4
5							
Steers	167.7	134.0	144.3	131.7	133.0	1,742.1	1,597.1
Heifers	44.4	34.7	43.8	43.6	42.2	468.3	443.6
All Cows	134.6	128.6	155.6	150.8	138.6	1,631.3	1,527.6
Dairy Cows	77.4	72.4	84.5	79.1	71.1	870.3	825.2
Other Cows	57.3	56.2	71.1	71.7	67.5	760.9	702.4
Bulls	9.4	7.6	9.4	8.6	6.9	93.9	97.3
Total Cattle ³	356.1	304.9	353.1	334.7	320.7	3,935.5	3,665.6

See footnote(s) at end of table.

--continued

**Cattle Slaughter: Number of Head Federally Inspected by Region,
Classification, and Month, 2007 and 2006 Total ¹ (continued)**

Standard Federal Regions ²	Jan	Feb	Mar	Apr	May	Jun	Jul
	<i>1,000 Head</i>	<i>1,000 Head</i>	<i>1,000 Head</i>	<i>1,000 Head</i>	<i>1,000 Head</i>	<i>1,000 Head</i>	<i>1,000 Head</i>
6							
Steers	244.1	224.7	275.2	266.9	296.3	278.7	267.6
Heifers	147.2	148.0	159.9	148.9	187.6	192.4	168.7
All Cows	70.4	68.9	70.8	62.0	69.0	60.5	54.5
Dairy Cows	14.8	17.5	19.3	16.0	11.8	10.2	11.5
Other Cows	55.6	51.4	51.5	45.9	57.2	50.3	43.0
Bulls	10.3	9.1	10.0	9.6	11.5	9.6	9.2
Total Cattle ³	472.0	450.7	515.9	487.3	564.4	541.2	500.0
7							
Steers	698.8	621.8	698.3	704.1	829.3	821.9	786.9
Heifers	488.7	463.6	461.6	441.9	503.7	543.6	499.2
All Cows	64.4	60.8	64.7	60.4	62.6	57.8	54.1
Dairy Cows	0.9	1.0	1.8	2.7	1.3	0.9	0.9
Other Cows	63.6	59.9	62.9	57.7	61.3	57.0	53.3
Bulls	7.4	6.2	9.0	7.8	8.4	8.7	8.1
Total Cattle ³	1,259.3	1,152.4	1,233.6	1,214.2	1,404.1	1,432.0	1,348.3
8							
Steers	115.0	95.1	104.5	106.5	131.8	152.6	145.6
Heifers	93.6	107.3	107.5	94.9	102.9	104.5	88.1
All Cows							
Dairy Cows							
Other Cows							
Bulls							
Total Cattle ³	228.4	218.2	228.5	218.1	252.8	272.5	248.6
9							
Steers	88.3	78.9	85.0	83.7	90.4	98.6	96.9
Heifers	8.1	9.6	12.1	9.9	11.3	14.4	12.3
All Cows	85.7	73.9	76.1	71.6	70.5	66.0	62.3
Dairy Cows	74.1	64.3	68.2	61.8	56.2	50.5	53.1
Other Cows	11.6	9.6	7.9	9.8	14.4	15.5	9.2
Bulls	3.6	2.8	3.5	3.9	4.3	4.4	3.6
Total Cattle ³	185.7	165.2	176.7	169.2	176.6	183.5	175.1
10							
Steers	45.2	48.5	49.9	50.8	59.2	62.5	63.1
Heifers	31.3	30.3	35.5	32.6	29.7	23.8	28.1
All Cows	12.1	15.4	24.2	24.5	24.8	24.0	23.0
Dairy Cows	7.7	8.4	13.4	15.4	12.5	9.6	10.5
Other Cows	4.5	6.9	10.8	9.2	12.3	14.4	12.5
Bulls	0.7	1.2	2.6	2.6	3.0	3.5	3.0
Total Cattle ³	89.3	95.5	112.1	110.4	116.7	113.8	117.2

See footnote(s) at end of table.

--continued

**Cattle Slaughter: Number of Head Federally Inspected by Region,
Classification, and Month, 2007 and 2006 Total ¹ (continued)**

Standard Federal Regions ²	Aug	Sep	Oct	Nov	Dec	2007 Total ³	2006 Total ³
	<i>1,000 Head</i>	<i>1,000 Head</i>	<i>1,000 Head</i>	<i>1,000 Head</i>	<i>1,000 Head</i>	<i>1,000 Head</i>	<i>1,000 Head</i>
6							
Steers	286.7	249.5	269.5	254.9	241.8	3,155.9	3,392.9
Heifers	180.3	150.0	209.9	161.8	150.0	2,004.6	2,054.6
All Cows	61.8	57.0	82.7	85.0	73.2	815.8	912.8
Dairy Cows	12.8	11.7	21.3	13.6	12.7	173.3	135.4
Other Cows	49.0	45.3	61.4	71.3	60.5	642.4	777.4
Bulls	10.1	9.9	11.5	10.8	10.0	121.5	114.6
Total Cattle ³	538.8	466.4	573.7	512.4	475.0	6,097.7	6,474.9
7							
Steers	841.9	679.2	738.9	657.6	624.4	8,703.0	8,847.9
Heifers	547.7	444.4	542.0	504.9	456.2	5,897.6	5,611.0
All Cows	56.6	49.6	63.6	68.5	64.1	727.3	668.9
Dairy Cows	1.1	0.8	1.2	1.3	1.0	14.7	16.8
Other Cows	55.4	48.8	62.4	67.2	63.0	712.6	652.1
Bulls	10.2	8.7	10.0	8.0	6.7	99.3	95.1
Total Cattle ³	1,456.3	1,182.0	1,354.5	1,239.0	1,151.5	15,427.1	15,222.8
8							
Steers	140.6	122.6	138.0	122.2	110.2	1,484.7	1,532.8
Heifers	102.6	105.8	126.6	111.9	102.8	1,248.5	1,144.7
All Cows							
Dairy Cows							
Other Cows							
Bulls							
Total Cattle ³	259.0	242.3	282.9	253.4	232.1	2,936.7	2,872.6
9							
Steers	98.2	80.8	88.9	88.0	85.3	1,063.0	991.9
Heifers	10.2	11.0	10.7	9.0	10.1	128.7	85.3
All Cows	73.1	66.4	80.8	74.0	69.9	870.3	890.0
Dairy Cows	62.9	59.2	70.9	64.5	62.4	748.1	763.9
Other Cows	10.2	7.2	9.9	9.6	7.5	122.3	126.2
Bulls	4.3	3.3	3.7	2.7	2.5	42.6	47.0
Total Cattle ³	185.8	161.5	183.9	173.7	167.7	2,104.5	2,014.2
10							
Steers	63.4	54.7	59.2	47.9	47.8	652.2	678.4
Heifers	32.2	30.7	30.8	35.5	30.9	371.4	398.6
All Cows	22.7	21.9	28.5	31.0	28.1	280.3	120.8
Dairy Cows	10.1	10.8	12.1	11.5	13.1	135.1	81.5
Other Cows	12.6	11.1	16.4	19.5	15.0	145.1	39.3
Bulls	3.1	2.9	3.3	3.1	3.2	32.3	8.0
Total Cattle ³	121.4	110.3	121.8	117.6	110.0	1,336.2	1,205.8

¹ Missing data are not printed to avoid disclosing individual operations.

² States included in regions are as follows: 1- CT, ME, MA, NH, RI, & VT; 2- NY & NJ; 3- DE-MD, PA, VA, & WV; 4- AL, FL, GA, KY, MS, NC, SC, & TN; 5- IL, IN, MI, MN, OH, & WI; 6- AR, LA, NM, OK, & TX; 7- IA, KS, MO, & NE; 8- CO, MT, ND, SD, UT, & WY; 9- AZ, CA, HI, & NV; 10- AK, ID, OR, & WA.

³ Totals based on unrounded data and may not equal sum of parts.

**Calf Slaughter: Number of Head Federally Inspected by Region
and Month, 2007 and 2006 Total ¹**

Standard Federal Regions ²	Jan	Feb	Mar	Apr	May	Jun	Jul
	<i>1,000 Head</i>	<i>1,000 Head</i>	<i>1,000 Head</i>	<i>1,000 Head</i>	<i>1,000 Head</i>	<i>1,000 Head</i>	<i>1,000 Head</i>
1	0.1	0.1	0.1	0.1	0.1	0.1	0.1
2	23.1	20.5	21.5	15.9	16.4	17.7	19.5
3	15.8	15.2	16.9	14.5	15.2	14.7	14.3
4							
5	19.3	15.5	17.5	15.8	15.9	15.2	14.1
6	2.3	3.1	1.6	0.8	0.6	1.4	0.5
7							
8							
9	11.5	9.6	10.5	7.5	8.5	9.8	12.0
10							

See footnote(s) at end of table.

--continued

**Calf Slaughter: Number of Head Federally Inspected by Region
and Month, 2007 and 2006 Total¹ (continued)**

Standard Federal Regions ²	Aug	Sep	Oct	Nov	Dec	2007 Total ³	2006 Total ³
	<i>1,000 Head</i>	<i>1,000 Head</i>	<i>1,000 Head</i>	<i>1,000 Head</i>	<i>1,000 Head</i>	<i>1,000 Head</i>	<i>1,000 Head</i>
1	0.1	0.2	0.1	0.2	0.2	1.7	3.3
2	23.8	18.7	21.3	19.2	19.5	237.2	196.9
3	14.2	12.2	14.9	12.7	13.7	174.2	180.7
4							
5	13.1	12.4	15.4	13.6	14.2	181.9	206.6
6	0.8	0.7	1.2	1.1	0.7	14.8	8.4
7						0.4	0.4
8							0.1
9	11.3	9.5	9.4	9.5	10.4	119.6	91.3
10							

¹ Missing data are not printed to avoid disclosing individual operations.

² States included in regions are as follows: 1- CT, ME, MA, NH, RI, & VT; 2- NY & NJ; 3- DE-MD, PA, VA, & WV; 4- AL, FL, GA, KY, MS, NC, SC, & TN; 5- IL, IN, MI, MN, OH, & WI; 6- AR, LA, NM, OK, & TX; 7- IA, KS, MO, & NE; 8- CO, MT, ND, SD, UT, & WY; 9- AZ, CA, HI, & NV; 10- AK, ID, OR, & WA.

³ Totals based on unrounded data and may not equal sum of parts.

**Hog Slaughter: Number of Head Federally Inspected by Region,
Classification, and Month, 2007 and 2006 Total ¹**

Standard Federal Regions ²	Jan	Feb	Mar	Apr	May	Jun	Jul
	<i>1,000 Head</i>	<i>1,000 Head</i>	<i>1,000 Head</i>	<i>1,000 Head</i>	<i>1,000 Head</i>	<i>1,000 Head</i>	<i>1,000 Head</i>
1							
Barrows & Gilts	1.1	0.8	0.8	0.7	1.1	1.4	1.2
Sows							
Boars							
Total Hogs ³	1.1	0.8	0.8	0.7	1.1	1.4	1.3
2							
Barrows & Gilts	10.0	11.2	10.0	9.3	10.8	11.7	11.5
Sows	0.1	0.1	0.2	0.2	0.1	0.1	0.2
Boars	0.1	0.1	0.1	0.1	0.1	0.1	0.1
Total Hogs ³	10.3	11.4	10.2	9.5	11.1	11.9	11.8
3							
Barrows & Gilts	416.5	385.5	441.3	410.6	432.3	405.5	392.1
Sows	1.2	1.1	1.1	1.0	1.2	1.0	0.9
Boars	15.1	11.3	14.5	11.7	12.1	11.9	12.6
Total Hogs ³	432.8	397.9	456.9	423.3	445.6	418.4	405.6
4							
Barrows & Gilts	1,398.8	1,228.7	1,314.1	1,141.9	1,211.0	1,125.3	1,162.9
Sows	75.7	68.4	77.0	60.7	67.5	60.3	65.8
Boars	2.4	1.5	2.0	1.2	1.2	1.4	1.7
Total Hogs ³	1,477.0	1,298.6	1,393.1	1,203.8	1,279.8	1,187.0	1,230.4
5							
Barrows & Gilts	2,333.8	1,985.7	2,325.1	2,116.6	2,171.4	2,050.8	2,122.4
Sows	118.6	102.7	123.0	121.2	128.9	121.0	117.4
Boars	3.2	3.2	3.4	3.4	4.2	3.6	3.7
Total Hogs ³	2,455.7	2,091.6	2,451.5	2,241.1	2,304.6	2,175.4	2,243.5

See footnote(s) at end of table.

--continued

**Hog Slaughter: Number of Head Federally Inspected by Region,
Classification, and Month, 2007 and 2006 Total ¹ (continued)**

Standard Federal Regions ²	Aug	Sep	Oct	Nov	Dec	2007 Total ³	2006 Total ³
	<i>1,000 Head</i>	<i>1,000 Head</i>	<i>1,000 Head</i>	<i>1,000 Head</i>	<i>1,000 Head</i>	<i>1,000 Head</i>	<i>1,000 Head</i>
1							
Barrows & Gilts	1.6	1.2	1.3	1.3	1.2	13.8	15.8
Sows						0.2	0.4
Boars						0.1	0.2
Total Hogs ³	1.6	1.3	1.4	1.4	1.3	14.1	16.4
2							
Barrows & Gilts	12.7	10.9	12.1	11.5	13.7	135.4	136.9
Sows	0.1	0.1	0.1	0.1	0.1	1.7	1.8
Boars	0.1	0.1	0.1	0.1	0.1	1.3	1.0
Total Hogs ³	13.0	11.1	12.4	11.8	13.9	138.4	139.7
3							
Barrows & Gilts	429.4	423.4	506.0	457.9	487.6	5,188.2	4,960.0
Sows	1.2	1.0	1.3	1.4	1.7	14.2	12.4
Boars	14.5	12.4	13.8	12.8	11.2	153.8	51.4
Total Hogs ³	445.1	436.8	521.0	472.2	500.4	5,356.2	5,023.8
4							
Barrows & Gilts	1,307.6	1,182.1	1,461.9	1,363.2	1,281.5	15,179.0	15,821.4
Sows	77.2	76.2	88.9	85.7	78.7	882.3	934.9
Boars	1.2	1.1	1.4	2.0	1.8	18.8	14.9
Total Hogs ³	1,385.9	1,259.4	1,552.3	1,450.8	1,362.0	16,080.0	16,771.2
5							
Barrows & Gilts	2,370.0	2,151.1	2,669.3	2,525.8	2,438.4	27,260.6	26,252.7
Sows	124.2	101.2	126.7	115.0	105.5	1,405.3	1,324.5
Boars	3.9	3.2	4.1	3.9	3.1	42.9	40.6
Total Hogs ³	2,498.1	2,255.5	2,800.1	2,644.6	2,547.0	28,708.7	27,617.8

See footnote(s) at end of table.

--continued

**Hog Slaughter: Number of Head Federally Inspected by Region,
Classification, and Month, 2007 and 2006 Total ¹ (continued)**

Standard Federal Regions ²	Jan	Feb	Mar	Apr	May	Jun	Jul
	<i>1,000 Head</i>	<i>1,000 Head</i>	<i>1,000 Head</i>	<i>1,000 Head</i>	<i>1,000 Head</i>	<i>1,000 Head</i>	<i>1,000 Head</i>
6							
Barrows & Gilts	431.8	398.2	474.5	415.2	433.0	429.2	406.2
Sows	22.2	21.5	19.1	18.5	20.8	20.7	21.0
Boars	0.1		0.1	0.2	0.1	0.2	0.1
Total Hogs ³	454.1	419.7	493.7	433.9	454.0	450.0	427.3
7							
Barrows & Gilts	3,748.4	3,190.0	3,575.3	3,382.8	3,468.3	3,286.6	3,300.1
Sows							
Boars							
Total Hogs ³	3,825.7	3,257.6	3,661.0	3,465.4	3,556.2	3,371.4	3,380.1
8							
Barrows & Gilts	365.4	328.8	402.3	374.1	378.2	364.5	378.4
Sows	10.5	5.1	2.3	0.4	0.5	0.5	0.4
Boars							
Total Hogs ³	376.0	333.9	404.6	374.5	378.7	365.0	378.8
9							
Barrows & Gilts	216.0	199.2	214.8	205.6	216.9	206.0	201.7
Sows							
Boars							
Total Hogs ³	216.1	199.3	215.0	205.8	217.0	206.1	201.7
10							
Barrows & Gilts	32.6	28.9	31.9	30.7	32.3	31.1	31.3
Sows	0.1	0.1	0.1	0.1	0.1	0.1	0.1
Boars							
Total Hogs ³	32.6	28.9	32.0	30.8	32.4	31.2	31.3

See footnote(s) at end of table.

--continued

**Hog Slaughter: Number of Head Federally Inspected by Region,
Classification, and Month, 2007 and 2006 Total ¹ (continued)**

Standard Federal Regions ²	Aug	Sep	Oct	Nov	Dec	2007 Total ³	2006 Total ³
	<i>1,000 Head</i>	<i>1,000 Head</i>	<i>1,000 Head</i>	<i>1,000 Head</i>	<i>1,000 Head</i>	<i>1,000 Head</i>	<i>1,000 Head</i>
6							
Barrows & Gilts	428.4	410.3	480.8	447.6	450.5	5,205.7	5,108.0
Sows	22.4	23.6	27.1	26.4	26.6	270.0	257.0
Boars	0.1	0.4	1.5	2.6	2.0	7.4	1.3
Total Hogs ³	450.9	434.3	509.4	476.7	479.1	5,483.1	5,366.4
7							
Barrows & Gilts	3,682.0	3,560.7	4,282.3	4,080.8	3,902.3	43,459.7	40,475.8
Sows							
Boars							
Total Hogs ³	3,772.0	3,634.2	4,369.3	4,161.0	3,970.8	44,424.7	41,332.9
8							
Barrows & Gilts	468.5	425.9	520.3	486.1	453.6	4,946.0	4,457.6
Sows	0.5	0.3	0.3	0.1	0.2	21.2	74.9
Boars						0.1	0.1
Total Hogs ³	468.9	426.2	520.6	486.3	453.8	4,967.4	4,532.6
9							
Barrows & Gilts	226.2	196.4	235.0	230.0	243.3	2,591.1	2,520.6
Sows							
Boars							
Total Hogs ³	226.3	196.4	235.1	230.1	243.4	2,592.2	2,521.9
10							
Barrows & Gilts	33.7	28.2	33.5	29.4	28.7	372.2	364.5
Sows	0.1	0.1	0.1	0.1	0.1	1.0	1.1
Boars						0.2	0.3
Total Hogs ³	33.7	28.3	33.6	29.6	28.8	373.4	365.9

¹ Missing data are not printed to avoid disclosing individual operations.

² States included in regions are as follows: 1- CT, ME, MA, NH, RI, & VT; 2- NY & NJ; 3- DE-MD, PA, VA, & WV; 4- AL, FL, GA, KY, MS, NC, SC, & TN; 5- IL, IN, MI, MN, OH, & WI; 6- AR, LA, NM, OK, & TX; 7- IA, KS, MO, & NE; 8- CO, MT, ND, SD, UT, & WY; 9- AZ, CA, HI, & NV; 10- AK, ID, OR, & WA.

³ Totals based on unrounded data and may not equal sum of parts.

**Sheep and Lamb Slaughter: Number of Head Federally Inspected by Region,
Classification, and Month, 2007 and 2006 Total ¹**

Standard Federal Regions ²	Jan	Feb	Mar	Apr	May	Jun	Jul
	<i>1,000 Head</i>	<i>1,000 Head</i>	<i>1,000 Head</i>	<i>1,000 Head</i>	<i>1,000 Head</i>	<i>1,000 Head</i>	<i>1,000 Head</i>
1							
Mature Sheep							
Lambs & Yearlings							
Total Sheep ³							
2							
Mature Sheep	1.3	1.1	1.2	1.3	1.4	1.2	1.2
Lambs & Yearlings	9.2	7.9	12.0	16.0	12.0	10.7	10.6
Total Sheep ³	10.5	8.9	13.3	17.3	13.5	11.9	11.8
3							
Mature Sheep	0.4	0.3	0.3	0.9	0.4	0.4	0.4
Lambs & Yearlings	6.5	5.5	8.7	8.2	8.2	7.9	7.9
Total Sheep ³	6.9	5.7	9.0	9.0	8.6	8.3	8.2
4							
Mature Sheep	0.8	0.7	0.8	0.9	1.1	1.0	1.2
Lambs & Yearlings	1.7	1.5	1.6	1.9	1.9	1.7	2.1
Total Sheep ³	2.5	2.2	2.4	2.9	2.9	2.7	3.2
5							
Mature Sheep	3.4	2.6	3.2	2.7	4.0	2.9	3.4
Lambs & Yearlings	26.3	22.4	33.2	27.9	25.5	23.5	26.1
Total Sheep ³	29.7	25.1	36.4	30.6	29.5	26.5	29.5

See footnote(s) at end of table.

--continued

**Sheep and Lamb Slaughter: Number of Head Federally Inspected by Region,
Classification, and Month, 2007 and 2006 Total ¹ (continued)**

Standard Federal Regions ²	Aug	Sep	Oct	Nov	Dec	2007 Total ³	2006 Total ³
	<i>1,000 Head</i>	<i>1,000 Head</i>	<i>1,000 Head</i>	<i>1,000 Head</i>	<i>1,000 Head</i>	<i>1,000 Head</i>	<i>1,000 Head</i>
1							
Mature Sheep							
Lambs & Yearlings							
Total Sheep ³							
2							
Mature Sheep	1.3	1.3	1.6	1.4	2.1	16.5	15.9
Lambs & Yearlings	11.0	12.5	12.5	10.2	13.0	137.5	128.6
Total Sheep ³	12.3	13.9	14.1	11.5	15.0	154.0	144.5
3							
Mature Sheep	0.3	0.4	0.3	0.3	0.3	4.6	5.2
Lambs & Yearlings	8.6	8.0	9.1	8.0	8.7	95.2	93.6
Total Sheep ³	8.9	8.4	9.4	8.3	9.0	99.8	98.8
4							
Mature Sheep	1.0	1.0	1.0	1.0	1.1	11.6	12.0
Lambs & Yearlings	2.4	2.8	2.7	2.0	2.8	25.0	24.8
Total Sheep ³	3.3	3.8	3.6	3.1	4.0	36.7	36.8
5							
Mature Sheep	3.5	3.3	3.6	3.1	3.5	39.1	41.7
Lambs & Yearlings	29.1	27.6	30.0	27.1	30.2	329.0	306.5
Total Sheep ³	32.6	30.9	33.6	30.2	33.7	368.1	348.2

See footnote(s) at end of table.

--continued

**Sheep and Lamb Slaughter: Number of Head Federally Inspected by Region,
Classification, and Month, 2007 and 2006 Total ¹ (continued)**

Standard Federal Regions ²	Jan	Feb	Mar	Apr	May	Jun	Jul
	<i>1,000 Head</i>	<i>1,000 Head</i>	<i>1,000 Head</i>	<i>1,000 Head</i>	<i>1,000 Head</i>	<i>1,000 Head</i>	<i>1,000 Head</i>
6							
Mature Sheep	0.4	0.4	0.3	0.3	0.2	0.3	0.4
Lambs & Yearlings	0.3	0.4	0.5	0.5	0.4	0.4	0.4
Total Sheep ³	0.7	0.8	0.9	0.8	0.6	0.7	0.9
7							
Mature Sheep	0.1	0.2	0.3	0.4	0.6	0.4	0.3
Lambs & Yearlings	33.6	32.8	45.0	27.2	23.5	24.1	31.8
Total Sheep ³	33.7	33.0	45.3	27.6	24.0	24.5	32.1
8							
Mature Sheep	1.8	1.8	2.2	1.9	2.0	1.7	1.4
Lambs & Yearlings	88.8	89.1	123.5	84.5	91.3	81.3	72.6
Total Sheep ³	90.5	90.9	125.7	86.4	93.2	83.0	74.0
9							
Mature Sheep							
Lambs & Yearlings							
Total Sheep ³							
10							
Mature Sheep	0.2	0.1	0.1	0.3	0.2	0.2	0.2
Lambs & Yearlings	1.8	1.5	2.3	1.6	2.3	2.4	3.1
Total Sheep ³	2.0	1.5	2.4	1.9	2.4	2.6	3.3

See footnote(s) at end of table.

--continued

**Sheep and Lamb Slaughter: Number of Head Federally Inspected by Region,
Classification, and Month, 2007 and 2006 Total ¹ (continued)**

Standard Federal Regions ²	Aug	Sep	Oct	Nov	Dec	2007 Total ³	2006 Total ³
	<i>1,000 Head</i>	<i>1,000 Head</i>	<i>1,000 Head</i>	<i>1,000 Head</i>	<i>1,000 Head</i>	<i>1,000 Head</i>	<i>1,000 Head</i>
6							
Mature Sheep	0.8	0.7	1.0	0.8	0.7	6.3	2.8
Lambs & Yearlings	0.6	0.6	0.8	0.8	0.6	6.2	40.6
Total Sheep ³	1.4	1.2	1.8	1.5	1.3	12.5	43.3
7							
Mature Sheep	0.5	0.4	0.3	0.3	0.3	3.9	6.6
Lambs & Yearlings	37.0	33.0	38.4	36.0	33.1	395.5	415.2
Total Sheep ³	37.6	33.3	38.7	36.3	33.4	399.5	421.8
8							
Mature Sheep	1.8	1.3	1.7	1.6	1.4	20.5	22.3
Lambs & Yearlings	81.7	75.7	95.3	97.5	83.9	1,065.1	1,071.3
Total Sheep ³	83.5	77.1	97.0	99.1	85.3	1,085.6	1,093.6
9							
Mature Sheep							
Lambs & Yearlings							
Total Sheep ³							
10							
Mature Sheep	0.4	0.2	0.2	0.1	0.2	2.2	1.6
Lambs & Yearlings	2.5	2.6	2.8	2.1	2.1	27.0	22.3
Total Sheep ³	2.9	2.8	3.0	2.2	2.4	29.2	23.9

¹ Missing data are not printed to avoid disclosing individual operations.

² States included in regions are as follows: 1- CT, ME, MA, NH, RI, & VT; 2- NY & NJ; 3- DE-MD, PA, VA, & WV; 4- AL, FL, GA, KY, MS, NC, SC, & TN; 5- IL, IN, MI, MN, OH, & WI; 6- AR, LA, NM, OK, & TX; 7- IA, KS, MO, & NE; 8- CO, MT, ND, SD, UT, & WY; 9- AZ, CA, HI, & NV; 10- AK, ID, OR, & WA.

³ Totals based on unrounded data and may not equal sum of parts.

**Commercial Cattle Slaughter: Number of Head by Month,
State, and United States, 2007 and 2006 Total ^{1 2}**

State	Jan	Feb	Mar	Apr	May	Jun	Jul
	<i>1,000 Head</i>	<i>1,000 Head</i>	<i>1,000 Head</i>	<i>1,000 Head</i>	<i>1,000 Head</i>	<i>1,000 Head</i>	<i>1,000 Head</i>
AL	0.3	0.3	0.6	0.5	0.5	0.5	0.4
AK	0.1			0.1			
AZ	41.6	38.5	41.9	37.8	40.9	44.4	44.4
AR	1.1	0.8	0.9	0.8	0.9	0.9	0.9
CA	143.9	126.5	134.4	131.1	135.1	138.8	130.2
CO	171.8	165.3	169.3	162.4	195.4	210.0	190.4
DE-MD	4.1	3.4	3.9	3.1	3.8	3.6	3.3
FL							
GA	29.8	25.2	23.3	25.1	29.3	25.4	24.7
HI	0.9	0.8	0.9	0.9	1.0	0.9	0.9
ID	2.4	8.1	17.1	19.5	21.2	21.2	21.6
IL							
IN	4.0	2.6	2.8	2.7	3.0	2.9	3.1
IA							
KS	625.0	576.7	648.1	650.3	722.4	723.1	671.5
KY	1.7	1.5	1.6	1.4	1.3	1.3	1.1
LA	0.8	0.7	0.7	0.7	0.6	0.6	0.6
MI	46.7	42.2	47.0	41.1	50.6	52.8	49.1
MN	76.3	61.9	65.4	62.4	63.5	60.7	56.5
MS	0.1	0.1	0.1	0.1	0.1	0.1	0.1
MO	7.4	6.9	7.8	6.9	7.3	7.0	7.2
MT	1.9	1.8	1.5	1.3	1.3	1.4	1.4
NE	581.7	529.6	532.8	515.8	625.1	657.1	624.7
NV	0.1	0.1	0.1	0.1	0.2	0.1	0.1
N ENG ³	1.2	0.9	0.9	0.8	1.1	1.1	0.9
NJ	2.6	2.0	2.4	2.3	2.5	2.3	2.4
NM	1.0	0.9	0.9	0.8	0.8	0.7	0.8
NY	2.5	1.8	2.2	2.2	2.6	2.0	2.1
NC	18.7	15.4	17.5	16.8	18.8	18.3	17.3
ND	1.3	0.9	1.1	1.0	1.2	1.1	0.9
OH	10.6	8.3	9.6	8.8	8.4	9.8	9.2
OK	2.2	1.9	2.0	2.2	2.2	1.8	1.6
OR	2.5	2.3	2.4	2.2	2.5	2.7	2.6
PA	80.5	69.3	77.2	77.7	78.2	79.1	79.9
SC	13.0	11.9	13.6	12.4	13.9	13.0	12.4
SD							
TN	1.7	1.8	2.0	1.7	1.8	2.0	2.0
TX	472.4	451.5	516.8	488.4	565.2	542.2	501.1
UT	43.4	43.0	48.8	45.0	45.3	52.4	48.8
VA	1.0	1.2	1.1	1.3	1.2	1.2	1.0
WA	85.6	86.2	93.8	89.9	94.2	91.1	94.3
WV	0.9	0.6	0.6	0.5	0.4	0.4	0.5
WI	155.2	131.1	142.5	136.0	145.3	143.0	133.9
WY	0.8	0.7	0.5	0.6	0.6	0.5	0.6
US ⁴	2,800.3	2,561.2	2,793.0	2,701.4	3,051.4	3,076.5	2,903.1
PR	4.5	3.7	4.2	3.3	3.8	3.3	3.3

See footnote(s) at end of table.

--continued

**Commercial Cattle Slaughter: Number of Head by Month,
State, and United States, 2007 and 2006 Total ^{1 2} (continued)**

State	Aug	Sep	Oct	Nov	Dec	2007 Total	2006 Total
	<i>1,000 Head</i>	<i>1,000 Head</i>	<i>1,000 Head</i>	<i>1,000 Head</i>	<i>1,000 Head</i>	<i>1,000 Head</i>	<i>1,000 Head</i>
AL	0.4	0.3	0.5	0.4	0.3	4.9	4.7
AK			0.1	0.1	0.1	0.7	0.8
AZ	43.9	43.0	45.2	42.9	39.4	504.1	
AR	1.0	1.0	1.0	0.7	0.9	10.8	10.9
CA	141.3	118.2	138.2	130.6	128.4	1,596.7	1,533.0
CO	194.5	181.0	211.0	186.9	171.8	2,209.8	2,116.2
DE-MD	3.5	2.9	3.8	3.3	3.1	41.9	43.3
FL							
GA	27.8	23.3	25.9	24.4	22.1	306.4	270.7
HI	1.1	0.9	1.0	0.9	0.8	11.1	10.5
ID	20.7	19.8	24.0	25.5	23.7	225.0	
IL							
IN	3.8	3.3	4.8	2.9	3.2	39.2	37.8
IA							
KS	718.7	574.3	662.9	599.8	553.1	7,725.9	7,543.1
KY	1.1	1.3	1.8	1.4	1.7	17.1	15.6
LA	0.6	0.6	0.6	0.6	0.5	7.8	10.3
MI	54.4	46.9	52.1	49.3	45.7	577.7	511.2
MN	61.7	54.7	69.2	68.8	64.7	765.8	724.7
MS	0.1	0.1	0.1	0.1		1.2	1.2
MO	7.1	6.6	8.7	6.1	7.9	87.0	86.0
MT	1.5	1.4	2.1	1.9	2.0	19.4	19.4
NE	677.8	557.8	635.0	586.2	547.8	7,071.4	7,068.5
NV	0.1	0.1	0.1	0.1	0.1	1.3	1.0
N ENG ³	1.1	1.2	1.6	1.4	1.1	13.4	13.5
NJ	2.8	2.5	2.9	2.5	2.4	29.6	26.7
NM	0.7	0.3	0.3	0.4	0.4	7.9	11.0
NY	2.3	2.4	3.1	2.4	2.0	27.6	30.6
NC	19.9	18.8	20.4	18.0	16.6	216.6	194.8
ND	1.0	0.9	1.2	0.8	1.1	12.5	11.8
OH	10.0	8.4	10.6	8.5	9.2	111.3	103.6
OK	1.9	1.5	1.4	1.4	1.9	22.2	27.7
OR	3.3	3.0	3.4	3.1	2.8	32.8	25.8
PA	86.2	77.0	89.4	77.5	73.4	945.6	858.5
SC	13.8	13.2	14.5	13.2	12.2	157.2	154.3
SD							
TN	2.2	2.1	2.7	2.3	2.1	24.3	15.3
TX	539.3	467.1	575.6	514.7	476.8	6,111.1	6,484.8
UT	54.5	52.7	60.3	53.4	46.7	594.1	634.4
VA	0.9	1.5	1.5	1.3	1.2	14.4	11.4
WA	98.7	88.9	95.8	90.3	84.8	1,093.7	937.9
WV	0.6	0.9	1.7	1.3	1.1	9.4	8.1
WI	148.0	133.1	155.6	142.3	142.5	1,708.4	1,582.5
WY	0.8	0.5	0.3	0.6	0.6	7.0	7.0
US ⁴	3,132.1	2,664.6	3,102.0	2,830.7	2,647.9	34,264.0	33,698.3
PR	4.3	3.2	4.3	3.5	2.6	44.0	43.2

¹ Includes slaughter in federally inspected and in other slaughter plants, but excludes animals slaughtered on farms.

² US totals and yearly totals are based on unrounded data and may not equal sum of parts.

³ N ENG includes CT, ME, MA, NH, RI, and VT.

⁴ States with no data printed are still included in US total. Data not printed to avoid disclosing individual operations. Puerto Rico is not included in US totals.

**Commercial Cattle Slaughter: Total Live Weight by Month,
State, and United States, 2007 and 2006 Total ^{1 2}**

State	Jan	Feb	Mar	Apr	May	Jun	Jul
	<i>1,000 Pounds</i>	<i>1,000 Pounds</i>	<i>1,000 Pounds</i>	<i>1,000 Pounds</i>	<i>1,000 Pounds</i>	<i>1,000 Pounds</i>	<i>1,000 Pounds</i>
AL	254	343	583	463	462	453	376
AK	79			59			
AZ	57,628	53,598	58,019	51,883	56,079	60,428	61,039
AR	1,135	851	883	861	887	856	900
CA	191,818	168,380	176,910	167,157	172,042	176,782	165,029
CO	225,480	215,134	219,165	201,555	238,374	262,524	245,680
DE-MD	5,483	4,572	5,170	4,139	5,082	4,786	4,283
FL							
GA	27,311	23,132	21,297	22,641	25,923	22,332	21,687
HI	970	867	984	926	1,061	1,014	939
ID	2,406	10,682	24,349	24,042	25,716	25,924	25,036
IL							
IN	4,156	2,755	2,946	2,836	3,108	3,038	3,309
IA							
KS	789,111	713,198	786,508	780,740	872,915	892,945	847,035
KY	1,554	1,400	1,505	1,265	1,247	1,197	1,088
LA	689	669	640	619	492	475	462
MI	64,620	57,972	64,476	55,078	68,264	70,856	66,175
MN	106,104	86,226	91,860	84,931	85,152	82,424	76,465
MS	110	140	101	90	127	69	68
MO	9,063	8,352	9,510	8,236	8,798	8,405	8,809
MT	2,261	2,162	1,848	1,517	1,629	1,747	1,646
NE	780,343	698,733	689,844	647,880	782,761	834,203	807,489
NV	128	85	88	90	240	108	96
N ENG ³	1,300	957	1,003	933	1,255	1,192	1,061
NJ	3,081	2,524	2,990	2,804	3,053	2,822	2,925
NM	971	810	786	648	732	585	629
NY	2,792	2,019	2,472	2,478	2,835	2,318	2,388
NC	22,143	18,201	20,423	19,638	22,187	21,366	20,169
ND	1,480	1,100	1,224	1,215	1,439	1,259	1,115
OH	12,347	9,739	11,298	10,302	9,943	11,479	10,838
OK	2,462	2,059	2,302	2,457	2,457	2,042	1,722
OR	2,864	2,685	2,804	2,556	2,854	3,123	3,003
PA	101,664	86,714	96,280	96,056	96,383	97,084	98,715
SC	14,881	13,797	15,846	14,561	16,229	14,884	13,867
SD							
TN	1,538	1,640	1,696	1,469	1,672	1,700	1,667
TX	569,240	534,437	612,666	575,729	668,316	651,899	617,462
UT	55,629	55,482	63,390	55,899	55,361	65,345	61,981
VA	1,111	1,332	1,098	1,356	1,189	1,247	1,084
WA	113,426	114,550	123,365	115,559	119,710	117,154	122,900
WV	933	624	644	527	473	432	585
WI	210,982	177,530	190,526	180,851	193,032	189,911	176,964
WY	906	800	647	653	698	635	680
US ⁴	3,598,854	3,249,960	3,505,279	3,324,065	3,748,224	3,833,514	3,673,852
PR	4,158	3,429	3,888	3,191	3,585	3,431	3,358

See footnote(s) at end of table.

--continued

**Commercial Cattle Slaughter: Total Live Weight by Month,
State, and United States, 2007 and 2006 Total^{1 2} (continued)**

State	Aug	Sep	Oct	Nov	Dec	2007 Total	2006 Total
	<i>1,000 Pounds</i>	<i>1,000 Pounds</i>	<i>1,000 Pounds</i>	<i>1,000 Pounds</i>	<i>1,000 Pounds</i>	<i>1,000 Pounds</i>	<i>1,000 Pounds</i>
AL	349	257	434	325	247	4,545	4,237
AK			105	108	60	744	903
AZ	60,665	59,846	63,752	60,123	55,377	698,437	
AR	974	1,011	1,088	710	884	11,040	10,578
CA	179,361	149,208	175,538	166,312	165,404	2,053,941	2,016,239
CO	253,911	239,087	282,824	250,480	227,506	2,861,722	2,753,082
DE-MD	4,571	3,726	4,990	4,348	4,078	55,226	57,224
FL							
GA	25,060	21,733	24,133	23,021	20,890	279,159	251,391
HI	1,111	977	1,065	902	823	11,640	11,090
ID	24,999	24,997	29,226	30,873	29,214	277,464	
IL							
IN	4,046	3,531	5,020	3,060	3,396	41,198	39,663
IA							
KS	911,096	738,949	861,628	786,182	719,679	9,699,986	9,509,055
KY	1,086	1,191	1,621	1,319	1,606	16,080	14,728
LA	514	475	468	483	396	6,383	8,467
MI	73,172	61,990	67,296	66,341	62,729	778,969	699,309
MN	84,636	75,103	94,409	92,778	88,492	1,048,580	1,001,570
MS	61	74	73	64		1,008	979
MO	8,717	7,977	10,358	7,340	9,450	105,015	103,770
MT	1,734	1,632	2,396	2,183	2,343	23,098	23,188
NE	887,315	743,828	860,841	791,852	737,099	9,262,189	9,287,561
NV	98	102	149	79	100	1,364	1,139
N ENG ³	1,197	1,293	1,612	1,413	1,135	14,352	14,308
NJ	3,389	2,920	3,478	3,011	2,899	35,895	32,217
NM	673	293	337	357	377	7,196	10,346
NY	2,586	2,666	3,387	2,829	2,366	31,136	33,486
NC	22,984	21,226	22,959	20,634	19,046	250,977	229,611
ND	1,179	1,005	1,465	982	1,286	14,749	14,109
OH	11,759	9,728	12,391	9,935	10,876	130,634	121,040
OK	1,992	1,602	1,590	1,552	2,099	24,337	30,884
OR	3,875	3,524	3,917	3,545	3,173	37,923	30,577
PA	106,399	95,313	110,938	98,054	92,421	1,176,021	1,054,425
SC	15,106	14,101	15,434	14,161	12,892	175,759	172,915
SD							
TN	1,957	1,813	2,271	1,914	1,799	21,136	13,955
TX	672,161	583,608	719,700	645,260	595,414	7,445,891	7,816,688
UT	69,753	68,442	78,935	69,329	60,676	760,222	810,036
VA	963	1,536	1,489	1,288	1,246	14,940	12,061
WA	130,895	117,200	126,780	117,741	110,447	1,429,728	1,227,387
WV	681	901	1,652	1,298	1,177	9,928	8,574
WI	193,266	171,619	203,480	186,138	190,207	2,264,507	2,117,144
WY	970	588	379	644	699	8,299	8,335
US ⁴	3,993,828	3,426,021	4,017,875	3,677,465	3,434,170	43,483,106	42,819,733
PR	4,371	3,358	4,674	3,882	2,939	44,264	40,127

¹ Includes slaughter in federally inspected and in other slaughter plants, but excludes animals slaughtered on farms.

² US totals and yearly totals are based on unrounded data and may not equal sum of parts.

³ N ENG includes CT, ME, MA, NH, RI, and VT.

⁴ States with no data printed are still included in US total. Data not printed to avoid disclosing individual operations. Puerto Rico is not included in US totals.

**Commercial Cattle Slaughter: Average Live Weight by Month,
State, and United States, 2007 and 2006 Average^{1 2}**

State	Jan	Feb	Mar	Apr	May	Jun	Jul
	<i>Pounds</i>	<i>Pounds</i>	<i>Pounds</i>	<i>Pounds</i>	<i>Pounds</i>	<i>Pounds</i>	<i>Pounds</i>
AL	862	1,086	944	985	986	973	1,002
AK	1,117			1,131			
AZ	1,388	1,398	1,387	1,377	1,374	1,365	1,376
AR	1,025	1,041	988	1,030	1,008	985	1,008
CA	1,357	1,356	1,340	1,297	1,294	1,295	1,288
CO	1,313	1,302	1,295	1,242	1,220	1,251	1,291
DE-MD	1,345	1,341	1,337	1,325	1,336	1,314	1,307
FL							
GA	924	926	921	908	888	885	880
HI	1,079	1,094	1,062	1,070	1,085	1,069	1,023
ID	1,067	1,341	1,448	1,247	1,230	1,236	1,171
IL							
IN	1,050	1,048	1,051	1,046	1,053	1,048	1,054
IA							
KS	1,263	1,237	1,214	1,201	1,209	1,235	1,262
KY	941	943	946	937	945	951	980
LA	830	944	876	860	792	781	739
MI	1,391	1,381	1,381	1,351	1,359	1,348	1,355
MN	1,401	1,403	1,416	1,372	1,349	1,365	1,363
MS	814	1,015	875	960	878	807	832
MO	1,235	1,228	1,225	1,208	1,205	1,208	1,226
MT	1,215	1,205	1,205	1,186	1,220	1,249	1,220
NE	1,344	1,322	1,297	1,258	1,253	1,271	1,294
NV	982	1,052	1,102	1,005	1,119	1,092	1,009
N ENG ³	1,043	1,074	1,124	1,111	1,096	1,101	1,119
NJ	1,214	1,246	1,238	1,233	1,241	1,222	1,214
NM	1,016	983	963	949	992	930	877
NY	1,155	1,139	1,171	1,133	1,144	1,148	1,164
NC	1,186	1,185	1,174	1,172	1,184	1,172	1,169
ND	1,184	1,207	1,137	1,182	1,157	1,170	1,198
OH	1,181	1,178	1,192	1,187	1,197	1,178	1,184
OK	1,108	1,092	1,138	1,128	1,123	1,105	1,068
OR	1,196	1,213	1,207	1,191	1,208	1,198	1,182
PA	1,272	1,259	1,256	1,243	1,239	1,235	1,243
SC	1,151	1,166	1,173	1,183	1,174	1,148	1,123
SD							
TN	898	929	887	886	927	887	873
TX	1,208	1,187	1,189	1,182	1,185	1,206	1,236
UT	1,285	1,294	1,301	1,245	1,223	1,249	1,272
VA	1,130	1,068	1,042	1,044	982	1,022	1,077
WA	1,330	1,333	1,320	1,291	1,276	1,290	1,310
WV	1,052	1,099	1,094	1,074	1,127	1,195	1,188
WI	1,374	1,369	1,351	1,344	1,344	1,341	1,336
WY	1,165	1,202	1,209	1,181	1,235	1,171	1,121
US ⁴	1,290	1,274	1,260	1,235	1,232	1,250	1,269
PR	931	946	934	962	960	1,034	1,035

See footnote(s) at end of table.

--continued

**Commercial Cattle Slaughter: Average Live Weight by Month,
State, and United States, 2007 and 2006 Average^{1,2} (continued)**

State	Aug	Sep	Oct	Nov	Dec	2007 Average	2006 Average
	<i>Pounds</i>	<i>Pounds</i>	<i>Pounds</i>	<i>Pounds</i>	<i>Pounds</i>	<i>Pounds</i>	<i>Pounds</i>
AL	877	867	857	843	945	936	901
AK			1,131	982	1,147	1,109	1,125
AZ	1,384	1,395	1,416	1,404	1,410	1,390	
AR	1,030	1,053	1,049	1,076	1,016	1,025	982
CA	1,290	1,284	1,292	1,296	1,312	1,309	1,342
CO	1,306	1,322	1,342	1,341	1,325	1,296	1,302
DE-MD	1,293	1,271	1,300	1,312	1,312	1,317	1,322
FL							
GA	904	938	935	945	946	916	935
HI	1,045	1,051	1,019	1,030	1,006	1,052	1,060
ID	1,224	1,283	1,236	1,227	1,249	1,252	
IL							
IN	1,054	1,055	1,053	1,057	1,053	1,052	1,048
IA							
KS	1,268	1,287	1,300	1,311	1,301	1,256	1,261
KY	957	935	898	925	929	938	943
LA	846	822	774	779	770	822	825
MI	1,355	1,333	1,303	1,356	1,383	1,357	1,373
MN	1,381	1,381	1,372	1,356	1,378	1,378	1,393
MS	793	824	814	798		864	816
MO	1,236	1,208	1,193	1,208	1,202	1,215	1,217
MT	1,165	1,181	1,164	1,155	1,163	1,192	1,197
NE	1,311	1,335	1,357	1,353	1,348	1,312	1,316
NV	1,084	1,022	1,036	1,020	1,078	1,054	1,093
N ENG ³	1,080	1,050	1,039	1,038	1,029	1,071	1,061
NJ	1,219	1,195	1,204	1,215	1,202	1,220	1,219
NM	984	1,025	994	988	1,046	974	977
NY	1,145	1,118	1,125	1,184	1,179	1,149	1,124
NC	1,164	1,133	1,129	1,152	1,152	1,164	1,184
ND	1,224	1,174	1,181	1,212	1,174	1,182	1,195
OH	1,178	1,165	1,168	1,177	1,193	1,181	1,180
OK	1,044	1,039	1,102	1,079	1,080	1,095	1,115
OR	1,199	1,194	1,172	1,174	1,183	1,192	1,218
PA	1,243	1,246	1,250	1,275	1,270	1,252	1,238
SC	1,105	1,074	1,072	1,078	1,065	1,126	1,129
SD							
TN	912	876	858	863	864	886	925
TX	1,250	1,253	1,254	1,258	1,252	1,222	1,209
UT	1,283	1,302	1,311	1,302	1,303	1,282	1,279
VA	1,095	1,043	1,015	1,026	1,002	1,042	1,059
WA	1,332	1,325	1,329	1,309	1,307	1,313	1,315
WV	1,136	974	988	1,019	1,036	1,054	1,065
WI	1,319	1,302	1,319	1,322	1,348	1,339	1,353
WY	1,255	1,197	1,174	1,164	1,161	1,188	1,187
US ⁴	1,279	1,290	1,300	1,304	1,302	1,273	1,275
PR	1,031	1,053	1,091	1,109	1,124	1,013	934

¹ Includes slaughter in federally inspected and in other slaughter plants, but excludes animals slaughtered on farms.

² Averages are based on unrounded data.

³ N ENG includes CT, ME, MA, NH, RI, and VT.

⁴ States with no data printed are still included in US total. Data not printed to avoid disclosing individual operations. Puerto Rico is not included in US totals.

**Commercial Calf Slaughter: Number of Head by Month,
State, and United States, 2007 and 2006 Total ^{1 2}**

State	Jan	Feb	Mar	Apr	May	Jun	Jul
	<i>1,000 Head</i>	<i>1,000 Head</i>	<i>1,000 Head</i>	<i>1,000 Head</i>	<i>1,000 Head</i>	<i>1,000 Head</i>	<i>1,000 Head</i>
AL							
AK							
AZ							
AR							
CA	11.7	9.7	10.6	7.7	8.7	10.1	12.2
CO							
DE-MD	0.2	0.2	0.1	0.2	0.1	0.1	0.2
FL							
GA	0.1	0.1	0.1	0.1	0.1	0.1	0.1
HI							
ID							
IL	4.0	3.7	3.6	3.4	3.6	3.1	2.7
IN							
IA							
KS							
KY	0.1		0.1		0.1	0.1	0.1
LA	0.3	0.3	0.4	0.3	0.2	0.2	0.1
MI	2.9	2.0	2.2	1.9	1.8	1.8	1.8
MN							
MS							
MO							
MT							
NE							
NV							
N ENG ³	0.2	0.1	0.1	0.1	0.1	0.1	0.1
NJ	8.9	7.6	9.1	7.8	8.4	6.7	6.5
NM	1.0	1.5	0.7				
NY	14.2	13.0	12.5	8.2	8.0	11.0	13.1
NC	0.1	0.1	0.1	0.1	0.1	0.1	0.1
ND							
OH	0.1	0.1	0.1	0.1	0.1	0.1	
OK							
OR							
PA	15.6	15.0	16.7	14.3	15.0	14.5	14.1
SC							
SD							
TN	0.1	0.1	0.1	0.1	0.1	0.1	0.1
TX	1.4	1.7	1.0	0.9	0.7	1.5	0.6
UT							
VA	0.1		0.1	0.1	0.1	0.1	0.1
WA							
WV							
WI							
WY							
US ⁴	74.3	66.7	70.7	56.9	58.9	61.3	62.5
PR	1.0	0.8	1.0	0.8	0.8	0.7	0.7

See footnote(s) at end of table.

--continued

**Commercial Calf Slaughter: Number of Head by Month,
State, and United States, 2007 and 2006 Total ^{1 2} (continued)**

State	Aug	Sep	Oct	Nov	Dec	2007 Total	2006 Total
	<i>1,000 Head</i>	<i>1,000 Head</i>	<i>1,000 Head</i>	<i>1,000 Head</i>	<i>1,000 Head</i>	<i>1,000 Head</i>	<i>1,000 Head</i>
AL							
AK							
AZ							
AR							
CA	11.5	9.7	9.7	9.7	10.6	122.0	93.9
CO							
DE-MD	0.2	0.2	0.2	0.2	0.2	2.0	2.0
FL							
GA	0.1	0.1	0.1	0.1	0.1	1.1	1.3
HI							
ID							
IL	3.0	2.5	3.1	2.3	3.2	38.1	44.3
IN							2.9
IA							
KS							
KY	0.1				0.1	0.7	
LA	0.2	0.3	0.4	0.4	0.2	3.3	3.4
MI	1.8	2.2	2.3	1.5	1.6	23.8	33.0
MN						0.1	
MS						0.1	
MO					0.1	0.4	0.4
MT							
NE							
NV							
N ENG ³	0.2	0.2	0.1	0.2	0.2	1.8	3.5
NJ	6.1	5.2	4.5	4.6	5.5	80.8	86.2
NM			0.1			3.3	
NY	17.7	13.5	16.9	14.7	14.0	156.8	111.1
NC	0.1	0.2	0.2	0.2	0.2	1.5	0.8
ND							
OH	0.1	0.1	0.1	0.1	0.1	0.8	1.4
OK							0.7
OR						0.1	0.1
PA	13.9	12.0	14.6	12.4	13.4	171.5	178.1
SC							
SD							
TN	0.1	0.1	0.1	0.1	0.1	1.0	1.2
TX	0.8	0.9	1.6	1.5	0.9	13.5	10.1
UT						0.1	0.1
VA	0.1	0.1	0.1	0.1	0.1	0.8	0.7
WA							
WV							
WI							126.9
WY							
US ⁴	65.5	56.0	65.3	58.9	61.0	758.1	711.3
PR	0.9	0.9	1.4	1.0	0.7	10.6	10.3

¹ Includes slaughter in federally inspected and in other slaughter plants, but excludes animals slaughtered on farms.

² US totals and yearly totals are based on unrounded data and may not equal sum of parts.

³ N ENG includes CT, ME, MA, NH, RI, and VT.

⁴ States with no data printed are still included in US total. Data not printed to avoid disclosing individual operations. Puerto Rico is not included in US totals.

**Commercial Calf Slaughter: Total Live Weight by Month,
State, and United States, 2007 and 2006 Total ^{1 2}**

State	Jan	Feb	Mar	Apr	May	Jun	Jul
	<i>1,000 Pounds</i>	<i>1,000 Pounds</i>	<i>1,000 Pounds</i>	<i>1,000 Pounds</i>	<i>1,000 Pounds</i>	<i>1,000 Pounds</i>	<i>1,000 Pounds</i>
AL							
AK							
AZ							
AR							
CA	1,644	1,297	1,404	1,147	1,218	1,255	1,502
CO							
DE-MD	66	53	41	43	38	39	52
FL							
GA	33	43	40	53	59	56	32
HI							
ID							
IL	1,731	1,560	1,546	1,533	1,630	1,270	1,098
IN							
IA							
KS							
KY	30		40		31	37	40
LA	140	180	184	166	121	71	65
MI	1,239	868	943	792	790	753	755
MN							
MS							
MO							
MT							
NE							
NV							
N ENG ³	46	27	39	38	28	37	35
NJ	3,927	3,333	4,042	3,444	3,704	2,947	2,754
NM	76	133	59				
NY	2,168	1,553	1,739	1,348	1,434	1,413	1,491
NC	47	52	52	39	45	51	65
ND							
OH	25	23	26	25	18	27	
OK							
OR							
PA	6,034	5,618	6,443	5,653	6,114	5,454	5,254
SC							
SD							
TN	47	48	43	40	46	29	27
TX	883	1,067	656	553	400	618	339
UT							
VA	21		21	23	17	20	20
WA							
WV							
WI							
WY							
US ⁴	23,866	20,375	22,560	19,691	20,466	18,664	17,883
PR	98	78	117	82	81	68	70

See footnote(s) at end of table.

--continued

**Commercial Calf Slaughter: Total Live Weight by Month,
State, and United States, 2007 and 2006 Total ^{1 2} (continued)**

State	Aug	Sep	Oct	Nov	Dec	2007 Total	2006 Total
	<i>1,000 Pounds</i>	<i>1,000 Pounds</i>	<i>1,000 Pounds</i>	<i>1,000 Pounds</i>	<i>1,000 Pounds</i>	<i>1,000 Pounds</i>	<i>1,000 Pounds</i>
AL							
AK							
AZ							
AR							
CA	1,399	1,221	1,270	1,240	1,359	15,955	13,983
CO							
DE-MD	49	47	52	48	45	572	663
FL							
GA	39	23	28	26	27	460	579
HI							
ID							
IL	1,254	1,015	1,270	966	1,325	16,198	19,086
IN							363
IA							
KS							
KY	27				26	335	
LA	113	141	209	186	93	1,670	1,681
MI	733	916	942	615	641	9,988	13,969
MN						32	
MS						38	
MO					26	145	134
MT							
NE							
NV							
N ENG ³	53	47	41	65	38	495	631
NJ	2,550	2,169	1,809	1,860	2,276	34,814	37,433
NM			16			290	
NY	1,725	1,254	1,722	1,528	1,488	18,864	17,929
NC	62	85	99	77	81	756	383
ND							
OH	18	26	35	22	24	283	574
OK							306
OR						25	30
PA	5,359	4,925	5,951	5,103	5,379	67,285	70,882
SC							
SD							
TN	35	32	38	29	28	441	583
TX	498	465	761	816	499	7,555	5,969
UT						29	22
VA	19	21	21	31	30	259	225
WA							
WV							
WI							56,643
WY							
US ⁴	17,435	15,734	18,607	16,919	17,371	229,570	243,608
PR	86	92	119	91	60	1,043	995

¹ Includes slaughter in federally inspected and in other slaughter plants, but excludes animals slaughtered on farms.

² US totals and yearly totals are based on unrounded data and may not equal sum of parts.

³ N ENG includes CT, ME, MA, NH, RI, and VT.

⁴ States with no data printed are still included in US total. Data not printed to avoid disclosing individual operations. Puerto Rico is not included in US totals.

**Commercial Calf Slaughter: Average Live Weight by Month,
State, and United States, 2007 and 2006 Average^{1 2}**

State	Jan	Feb	Mar	Apr	May	Jun	Jul
	<i>Pounds</i>	<i>Pounds</i>	<i>Pounds</i>	<i>Pounds</i>	<i>Pounds</i>	<i>Pounds</i>	<i>Pounds</i>
AL							
AK							
AZ							
AR							
CA	141	134	133	150	140	125	124
CO							
DE-MD	381	336	274	268	279	275	265
FL							
GA	446	402	422	451	447	437	397
HI							
ID							
IL	434	427	429	449	453	410	408
IN							
IA							
KS							
KY	475		544		503	497	534
LA	518	525	489	506	500	467	469
MI	431	425	425	431	429	420	421
MN							
MS							
MO							
MT							
NE							
NV							
N ENG ³	271	245	274	275	273	261	266
NJ	444	440	446	444	443	438	427
NM	80	87	79				
NY	158	123	143	168	182	133	118
NC	515	546	496	435	467	468	494
ND							
OH	350	350	350	351	348	354	
OK							
OR							
PA	387	376	386	396	407	378	375
SC							
SD							
TN	454	455	422	450	471	440	424
TX	622	613	632	601	598	407	602
UT							
VA	292		304	334	323	325	327
WA							
WV							
WI							
WY							
US ⁴	324	308	321	348	349	307	289
PR	102	98	117	105	100	104	109

See footnote(s) at end of table.

--continued

**Commercial Calf Slaughter: Average Live Weight by Month,
State, and United States, 2007 and 2006 Average^{1 2} (continued)**

State	Aug	Sep	Oct	Nov	Dec	2007 Average	2006 Average
	<i>Pounds</i>	<i>Pounds</i>	<i>Pounds</i>	<i>Pounds</i>	<i>Pounds</i>	<i>Pounds</i>	<i>Pounds</i>
AL							
AK							
AZ							
AR							
CA	122	126	132	129	129	131	150
CO							
DE-MD	281	279	293	248	272	287	325
FL							
GA	415	397	384	444	418	424	439
HI							
ID							
IL	419	412	416	418	418	426	431
IN							127
IA							
KS							
KY	502				515	511	
LA	495	514	486	500	503	500	497
MI	419	424	420	412	406	423	424
MN						338	
MS						437	
MO					368	334	347
MT							
NE							
NV							
N ENG ³	313	291	281	268	229	271	183
NJ	416	414	402	409	413	431	435
NM			245			88	
NY	100	96	106	108	111	124	166
NC	533	467	452	490	522	488	479
ND							
OH	349	349	350	347	350	350	397
OK							440
OR						406	382
PA	385	412	407	411	401	393	399
SC							
SD							
TN	429	461	422	409	420	439	499
TX	597	535	492	569	545	561	599
UT						300	306
VA	322	334	335	323	357	325	340
WA							
WV							
WI							449
WY							
US ⁴	268	284	288	291	288	305	345
PR	98	102	86	88	90	99	98

¹ Includes slaughter in federally inspected and in other slaughter plants, but excludes animals slaughtered on farms.

² Averages are based on unrounded data.

³ N ENG includes CT, ME, MA, NH, RI, and VT.

⁴ States with no data printed are still included in US total. Data not printed to avoid disclosing individual operations. Puerto Rico is not included in US totals.

**Commercial Hog Slaughter: Number of Head by Month,
State, and United States, 2007 and 2006 Total ^{1 2}**

State	Jan	Feb	Mar	Apr	May	Jun	Jul
	<i>1,000 Head</i>	<i>1,000 Head</i>	<i>1,000 Head</i>	<i>1,000 Head</i>	<i>1,000 Head</i>	<i>1,000 Head</i>	<i>1,000 Head</i>
AL	10.3	7.5	9.3	8.2	8.5	7.5	7.8
AK		0.1	0.1		0.1		
AZ	0.3	0.2	0.2	0.5	0.4	0.2	0.1
AR	12.9	12.7	13.4	12.1	13.2	14.3	13.1
CA	219.6	204.1	218.9	210.2	221.4	210.9	206.4
CO	0.8	0.8	0.9	0.6	0.7	0.6	0.9
DE-MD	1.7	1.4	1.2	1.0	1.3	1.3	1.5
FL	7.1	6.7	7.1	6.7	7.8	6.5	6.8
GA	13.2	11.3	11.0	11.3	12.2	11.2	11.4
HI	1.7	1.5	1.7	1.7	1.8	1.9	1.8
ID	14.4	12.0	14.6	13.8	14.2	13.7	13.1
IL	822.8	711.7	866.4	760.4	767.6	722.2	765.8
IN	676.2	564.5	658.1	605.7	622.2	591.2	616.5
IA	2,635.3	2,198.4	2,485.8	2,321.8	2,366.3	2,241.5	2,241.6
KS	15.4	14.1	18.5	18.9	20.2	18.8	18.2
KY	225.9	186.9	234.3	230.0	232.2	216.5	226.3
LA	1.5	1.6	2.0	1.6	1.2	1.1	1.0
MI	9.8	8.9	9.3	9.4	10.2	10.4	11.2
MN	840.8	714.4	807.4	758.7	791.0	750.3	749.1
MS							
MO	559.4	499.9	525.3	542.8	571.6	558.3	562.2
MT	1.1	1.1	1.0	0.8	0.8	0.9	1.4
NE	623.5	552.6	639.0	589.2	605.1	560.0	566.4
NV							
N ENG ³	1.4	1.1	1.0	1.0	1.4	1.7	1.6
NJ	8.2	9.7	8.5	7.6	8.9	9.6	8.9
NM	0.1	0.1	0.1	0.1	0.1	0.1	
NY	2.4	2.0	2.0	2.1	2.4	2.5	3.1
NC	988.3	882.2	931.0	848.3	910.3	847.6	873.8
ND	13.3	11.0	11.2	11.2	12.0	10.9	10.9
OH	95.9	80.9	95.8	88.2	92.9	83.2	89.8
OK	413.8	380.7	455.9	398.1	412.8	410.4	386.4
OR	17.2	16.0	16.6	16.0	17.1	16.5	17.3
PA	246.8	225.1	263.3	241.5	254.9	223.4	225.8
SC							
SD	360.6	321.0	391.4	360.8	363.8	351.4	364.1
TN	53.1	47.4	54.0	42.4	47.7	42.0	48.1
TX	31.0	33.9	33.2	32.7	33.9	30.7	33.8
UT	4.9	3.2	4.1	4.7	5.5	5.0	5.5
VA	186.3	173.3	194.1	182.1	190.7	194.4	179.3
WA	2.0	1.9	1.8	2.0	2.1	2.1	2.1
WV	0.7	0.5	0.6	0.5	0.5	0.5	0.8
WI	45.0	39.5	45.9	47.1	52.8	49.6	49.7
WY	0.4	0.4	0.4	0.3	0.2	0.2	0.4
US ⁴	9,365.0	8,117.3	9,201.7	8,466.9	8,761.5	8,297.2	8,399.0
PR	3.6	4.2	4.2	3.4	4.7	4.3	5.1

See footnote(s) at end of table.

--continued

**Commercial Hog Slaughter: Number of Head by Month,
State, and United States, 2007 and 2006 Total ^{1 2} (continued)**

State	Aug	Sep	Oct	Nov	Dec	2007 Total	2006 Total
	<i>1,000 Head</i>	<i>1,000 Head</i>	<i>1,000 Head</i>	<i>1,000 Head</i>	<i>1,000 Head</i>	<i>1,000 Head</i>	<i>1,000 Head</i>
AL	7.7	7.2	8.7	7.7	7.6	98.2	107.0
AK	0.1	0.1			0.1	0.6	1.1
AZ	0.1	0.3	0.3	0.2	0.2	2.9	3.5
AR	15.5	15.0	18.1	17.4	17.6	175.3	159.2
CA	231.4	201.4	239.7	234.9	251.8	2,650.7	2,582.0
CO	1.5	1.0	1.0	0.8	0.5	10.1	12.4
DE-MD	1.9	1.4	1.8	1.7	1.6	17.8	18.7
FL	7.5	8.7	8.7	8.3	6.8	88.4	95.9
GA	11.0	10.7	12.9	12.0	12.6	140.8	133.8
HI	1.9	1.5	1.6	1.7	2.0	21.0	22.5
ID	14.1	12.4	14.4	13.0	12.4	162.1	152.8
IL	912.1	829.4	1,006.2	961.8	926.0	10,052.4	9,491.0
IN	666.9	587.8	759.1	720.6	693.2	7,762.1	7,385.2
IA	2,531.3	2,441.7	2,965.5	2,840.1	2,684.4	29,953.7	29,649.9
KS	19.3	16.4	19.4	15.3	10.3	204.7	
KY	227.9	218.3	269.0	250.0	243.3	2,760.5	2,466.8
LA	1.1	1.0	1.6	1.7	2.0	17.4	18.6
MI	12.4	9.4	10.6	10.9	10.9	123.3	122.4
MN	799.4	741.8	910.6	849.4	813.4	9,526.2	9,378.3
MS							
MO	594.8	572.9	669.0	640.4	632.1	6,928.7	
MT	1.6	1.3	1.2	1.3	1.3	13.8	15.2
NE	635.4	610.9	724.3	671.0	650.7	7,428.0	7,216.1
NV							
N ENG ³	2.0	1.7	1.9	1.8	1.6	18.2	20.1
NJ	9.8	8.6	9.7	9.7	11.5	110.6	107.4
NM	0.1	0.1	0.1	0.1	0.1	1.0	1.8
NY	3.5	2.8	3.1	2.4	2.6	30.9	35.9
NC	1,013.5	901.6	1,121.2	1,043.8	972.9	11,334.5	11,318.0
ND	10.2	9.0	10.9	9.1	9.2	129.0	152.2
OH	99.1	83.8	104.0	90.1	95.0	1,098.7	1,114.9
OK	406.4	392.4	459.5	427.3	427.6	4,971.1	4,902.8
OR	18.5	15.2	18.0	15.1	15.1	198.6	200.6
PA	248.0	225.9	272.1	256.4	273.7	2,956.9	2,959.9
SC							
SD	454.6	413.9	506.4	474.5	441.8	4,804.3	4,358.1
TN	57.6	57.9	66.8	66.5	59.9	643.3	637.1
TX	35.3	35.0	42.0	40.5	41.6	423.4	378.5
UT	6.5	5.3	6.4	5.0	5.6	61.8	47.1
VA	196.9	211.0	248.8	215.5	226.3	2,398.5	2,065.3
WA	2.4	2.0	2.4	2.5	2.4	25.8	24.8
WV	0.9	0.9	1.0	0.9	0.7	8.4	7.2
WI	52.8	42.0	51.1	43.5	39.3	558.3	536.6
WY	1.4	0.4	0.2	0.3	0.3	5.0	4.9
US ⁴	9,394.5	8,772.8	10,656.6	10,049.2	9,689.9	109,171.6	104,736.6
PR	4.2	5.1	5.6	5.2	9.5	58.9	59.8

¹ Includes slaughter in federally inspected and in other slaughter plants, but excludes animals slaughtered on farms.

² US totals and yearly totals are based on unrounded data and may not equal sum of parts.

³ N ENG includes CT, ME, MA, NH, RI, and VT.

⁴ States with no data printed are still included in US total. Data not printed to avoid disclosing individual operations. Puerto Rico is not included in US totals.

**Commercial Hog Slaughter: Total Live Weight by Month,
State, and United States, 2007 and 2006 Total ^{1 2}**

State	Jan	Feb	Mar	Apr	May	Jun	Jul
	<i>1,000 Pounds</i>	<i>1,000 Pounds</i>	<i>1,000 Pounds</i>	<i>1,000 Pounds</i>	<i>1,000 Pounds</i>	<i>1,000 Pounds</i>	<i>1,000 Pounds</i>
AL	4,702	3,433	4,124	3,757	3,865	3,450	3,555
AK		14	16		14		
AZ	39	34	44	116	95	40	23
AR	5,751	5,722	6,073	5,468	5,992	6,519	6,002
CA	52,976	48,164	53,614	51,272	54,141	50,244	48,295
CO	200	189	229	166	188	159	233
DE-MD	454	384	314	240	273	262	333
FL	1,064	1,055	1,076	1,049	1,120	958	1,024
GA	2,788	2,408	2,378	2,472	2,570	2,437	2,532
HI	375	338	377	351	394	395	388
ID	3,658	3,038	3,723	3,530	3,633	3,453	3,214
IL	230,878	198,613	242,235	214,203	214,863	201,553	210,811
IN	179,392	148,746	173,426	159,017	162,784	153,592	157,899
IA	715,540	594,082	675,342	629,171	638,752	600,380	594,127
KS	6,551	6,341	8,515	8,604	9,420	8,736	8,144
KY	60,065	49,582	61,991	60,605	61,823	56,734	59,253
LA	283	340	447	305	238	215	187
MI	3,793	3,375	3,503	3,462	3,702	3,643	3,863
MN	221,180	187,882	212,982	198,758	205,506	193,875	192,942
MS							
MO	154,997	137,667	146,276	152,165	157,273	151,856	150,983
MT	272	245	265	207	205	218	343
NE	169,237	149,139	172,384	159,267	162,516	149,874	149,066
NV							
N ENG ³	300	229	213	206	292	315	317
NJ	853	976	871	754	883	946	911
NM	13	23	12	12	16	12	
NY	453	354	376	371	409	408	500
NC	257,748	227,823	239,316	219,122	234,793	216,336	222,533
ND	3,268	2,768	2,801	2,805	2,979	2,687	2,669
OH	25,895	22,097	25,826	23,913	25,064	22,367	23,926
OK	113,397	104,744	125,248	108,784	112,068	109,732	102,119
OR	4,051	3,699	3,927	3,784	4,102	3,814	3,953
PA	62,388	56,498	66,551	61,049	63,997	55,770	56,480
SC							
SD	96,122	83,753	101,732	92,643	92,764	89,112	91,526
TN	25,594	22,407	25,611	20,339	22,722	20,107	22,866
TX	8,236	8,133	7,955	7,601	7,613	6,810	8,066
UT	913	570	795	912	1,075	1,026	1,034
VA	48,398	45,176	50,516	47,327	49,961	50,305	45,990
WA	423	398	397	408	456	416	428
WV	160	139	167	135	110	116	208
WI	19,809	17,486	20,466	21,291	23,988	22,516	21,743
WY	106	106	99	85	59	64	99
US ⁴	2,535,244	2,183,764	2,485,278	2,284,838	2,353,328	2,210,482	2,217,224
PR	507	680	635	530	745	695	914

See footnote(s) at end of table.

--continued

**Commercial Hog Slaughter: Total Live Weight by Month,
State, and United States, 2007 and 2006 Total^{1 2} (continued)**

State	Aug	Sep	Oct	Nov	Dec	2007 Total	2006 Total
	<i>1,000 Pounds</i>	<i>1,000 Pounds</i>	<i>1,000 Pounds</i>	<i>1,000 Pounds</i>	<i>1,000 Pounds</i>	<i>1,000 Pounds</i>	<i>1,000 Pounds</i>
AL	3,418	3,258	3,798	3,465	3,335	44,162	49,322
AK	30	13			12	147	242
AZ	25	57	52	44	29	599	705
AR	6,952	6,808	8,189	7,965	7,968	79,408	73,344
CA	53,777	47,286	58,132	57,836	61,517	637,254	613,941
CO	377	268	248	200	123	2,580	3,193
DE-MD	428	336	452	458	420	4,352	4,459
FL	1,064	1,060	1,173	1,137	1,014	12,794	12,643
GA	2,506	2,460	2,947	2,721	2,828	31,046	30,357
HI	397	337	359	401	443	4,554	5,114
ID	3,460	3,078	3,656	3,382	3,188	41,012	38,651
IL	248,030	227,589	280,476	270,615	258,524	2,798,390	2,648,704
IN	170,691	152,432	199,179	191,935	184,842	2,033,934	1,947,341
IA	667,732	651,618	802,754	772,812	731,234	8,073,546	8,023,172
KS	8,374	6,977	8,495	6,842	4,514	91,513	
KY	59,554	57,775	72,188	67,398	65,817	732,785	654,310
LA	224	197	279	305	318	3,339	3,535
MI	4,209	3,303	3,871	4,359	4,172	45,254	45,121
MN	206,416	193,730	240,168	224,404	214,632	2,492,475	2,452,324
MS							
MO	158,346	155,916	184,023	179,467	177,286	1,906,254	
MT	382	324	313	348	330	3,451	3,756
NE	167,259	163,027	195,691	181,817	176,184	1,995,460	1,943,013
NV							
N ENG ³	395	353	422	418	319	3,779	4,085
NJ	981	852	893	892	986	10,798	10,670
NM	31	32	36	31	19	249	465
NY	572	496	580	447	425	5,390	6,326
NC	256,954	229,359	289,590	274,537	257,756	2,925,867	2,891,317
ND	2,537	2,293	2,777	2,325	2,379	32,285	37,476
OH	26,450	22,397	28,135	25,502	26,492	298,064	303,301
OK	107,814	105,484	124,329	117,614	119,311	1,350,643	1,362,493
OR	4,234	3,573	4,439	3,881	3,806	47,264	46,061
PA	61,916	57,199	69,500	66,111	69,429	746,889	738,291
SC							
SD	114,393	105,217	129,362	122,625	114,252	1,233,499	1,135,672
TN	27,041	27,108	31,305	31,376	28,093	304,568	306,650
TX	8,622	9,098	10,595	11,173	11,271	105,173	96,548
UT	1,299	958	1,148	870	968	11,566	10,014
VA	50,055	54,477	65,615	57,420	59,629	624,870	534,680
WA	465	415	497	487	460	5,250	4,979
WV	235	223	265	204	175	2,138	1,844
WI	22,907	18,106	22,146	19,408	17,131	246,994	237,471
WY	364	122	55	73	77	1,311	1,306
US ⁴	2,470,996	2,334,352	2,870,727	2,734,844	2,632,754	29,313,831	28,142,716
PR	713	1,001	1,060	968	1,657	10,106	9,095

¹ Includes slaughter in federally inspected and in other slaughter plants, but excludes animals slaughtered on farms.

² US totals and yearly totals are based on unrounded data and may not equal sum of parts.

³ N ENG includes CT, ME, MA, NH, RI, and VT.

⁴ States with no data printed are still included in US total. Data not printed to avoid disclosing individual operations. Puerto Rico is not included in US totals.

**Commercial Hog Slaughter: Average Live Weight by Month,
State, and United States, 2007 and 2006 Average^{1 2}**

State	Jan	Feb	Mar	Apr	May	Jun	Jul
	<i>Pounds</i>	<i>Pounds</i>	<i>Pounds</i>	<i>Pounds</i>	<i>Pounds</i>	<i>Pounds</i>	<i>Pounds</i>
AL	460	457	444	457	456	458	455
AK		225	264		218		
AZ	154	187	207	252	215	211	196
AR	445	453	453	454	455	456	457
CA	242	236	245	244	245	238	234
CO	257	245	260	262	253	252	247
DE-MD	264	272	263	243	213	202	217
FL	151	159	152	157	145	148	152
GA	211	214	217	218	211	217	221
HI	217	219	224	211	217	207	211
ID	254	254	256	256	257	252	247
IL	281	279	280	282	280	279	276
IN	265	264	264	263	262	260	256
IA	272	270	272	271	270	268	265
KS	428	451	462	457	468	466	450
KY	266	266	265	264	267	263	262
LA	187	211	222	186	197	194	193
MI	387	383	379	371	364	351	347
MN	263	263	264	262	260	259	258
MS							
MO	277	276	279	280	275	272	269
MT	250	225	266	247	262	242	237
NE	272	270	270	271	269	268	263
NV							
N ENG ³	216	212	209	216	205	189	198
NJ	105	101	103	99	99	99	103
NM	243	319	221	235	249	234	
NY	188	182	190	176	170	161	160
NC	261	259	257	259	258	255	255
ND	246	251	250	251	249	248	244
OH	270	274	270	272	270	269	267
OK	274	275	275	273	272	267	264
OR	236	232	237	237	240	232	230
PA	253	252	253	253	251	250	250
SC							
SD	267	261	260	257	255	254	252
TN	483	473	475	480	477	479	476
TX	266	240	240	233	225	222	239
UT	187	178	193	195	196	203	188
VA	260	261	261	260	262	259	257
WA	214	206	218	201	219	198	202
WV	237	291	304	266	229	245	254
WI	450	451	454	461	460	459	444
WY	266	266	261	265	264	260	262
US ⁴	271	269	270	270	269	267	264
PR	139	162	152	156	160	160	180

See footnote(s) at end of table.

--continued

**Commercial Hog Slaughter: Average Live Weight by Month,
State, and United States, 2007 and 2006 Average^{1 2} (continued)**

State	Aug	Sep	Oct	Nov	Dec	2007 Average	2006 Average
	<i>Pounds</i>	<i>Pounds</i>	<i>Pounds</i>	<i>Pounds</i>	<i>Pounds</i>	<i>Pounds</i>	<i>Pounds</i>
AL	444	451	438	450	436	451	463
AK	219	266			245	234	230
AZ	252	214	206	212	129	206	202
AR	447	455	453	458	454	453	461
CA	233	235	243	246	245	241	238
CO	252	259	260	261	249	255	259
DE-MD	230	238	248	274	262	245	239
FL	143	122	136	138	150	145	133
GA	228	230	229	227	224	220	227
HI	209	220	221	232	220	217	227
ID	247	249	256	261	258	254	253
IL	272	275	279	282	279	279	279
IN	256	259	263	267	267	262	264
IA	264	267	271	272	273	270	271
KS	437	428	440	448	441	449	
KY	262	265	269	270	271	266	266
LA	206	194	178	183	158	192	190
MI	339	353	367	400	386	368	369
MN	259	262	264	265	264	262	262
MS							
MO	266	272	275	280	281	275	
MT	236	255	264	268	251	250	248
NE	263	267	270	271	271	269	270
NV							
N ENG ³	194	207	227	228	198	208	203
NJ	100	99	92	92	86	98	99
NM	243	244	270	258	248	253	265
NY	164	176	188	186	163	174	177
NC	254	255	259	263	265	258	256
ND	248	255	254	255	257	250	246
OH	267	268	271	284	280	272	272
OK	265	269	271	275	279	272	278
OR	230	235	247	258	254	239	231
PA	250	254	256	258	254	253	250
SC							
SD	252	254	256	259	259	257	261
TN	470	469	469	473	470	474	482
TX	245	260	252	276	271	249	255
UT	199	182	179	173	173	187	213
VA	254	258	264	267	264	261	259
WA	198	210	205	192	192	204	201
WV	267	249	258	223	263	255	257
WI	441	437	440	453	445	450	449
WY	258	285	265	261	260	264	265
US ⁴	263	266	270	272	272	269	269
PR	171	196	191	188	175	172	152

¹ Includes slaughter in federally inspected and in other slaughter plants, but excludes animals slaughtered on farms.

² Averages are based on unrounded data.

³ N ENG includes CT, ME, MA, NH, RI, and VT.

⁴ States with no data printed are still included in US total. Data not printed to avoid disclosing individual operations. Puerto Rico is not included in US totals.

**Commercial Sheep and Lamb Slaughter: Number of Head by Month,
State, and United States, 2007 and 2006 Total ^{1 2}**

State	Jan	Feb	Mar	Apr	May	Jun	Jul
	<i>1,000 Head</i>	<i>1,000 Head</i>	<i>1,000 Head</i>	<i>1,000 Head</i>	<i>1,000 Head</i>	<i>1,000 Head</i>	<i>1,000 Head</i>
AL							
AK							
AZ							
AR							
CA							
CO	86.9	87.7	122.4	83.4	89.2	79.9	71.5
DE-MD	2.7	2.2	2.8	3.1	2.8	2.8	2.8
FL	0.1	0.2	0.2	0.3	0.2	0.2	0.2
GA	0.4	0.3	0.4	0.6	0.6	0.3	0.6
HI							
ID	0.3	0.3	0.3	0.3	0.4	0.3	1.1
IL							
IN	1.8	1.3	2.2	2.5	2.2	2.0	2.2
IA	33.4	32.7	44.8	27.3	23.5	24.1	31.8
KS	0.1	0.2	0.2	0.3	0.2	0.2	0.2
KY	0.9	0.7	0.8	0.8	1.0	1.0	1.2
LA	0.1	0.3	0.4	0.3	0.2	0.2	0.2
MI	15.9	12.6	16.7	15.7	15.6	15.5	16.1
MN	0.3	0.2	0.2	0.2	0.2	0.3	0.2
MS							
MO	0.4	0.3	0.5	0.4	0.5	0.4	0.5
MT	0.3	0.3	0.3	0.1	0.1	0.2	0.2
NE							
NV	0.1	0.1	0.1	0.1	0.1	0.1	0.2
N ENG ³	2.2	1.8	2.5	3.1	2.4	2.1	2.4
NJ	8.8	7.1	10.1	13.9	10.7	9.9	9.8
NM	1.0	0.9	1.2	1.0	0.8	0.8	1.0
NY	2.4	2.6	4.3	4.1	3.6	2.9	3.0
NC	0.5	0.4	0.4	0.4	0.5	0.5	0.6
ND	0.1				0.1		
OH	0.9	0.7	1.0	1.6	1.1	1.3	1.4
OK			0.1	0.1	0.1	0.1	
OR	1.8	1.5	2.4	1.8	2.0	2.3	2.2
PA	3.6	3.0	5.5	5.5	5.1	4.7	4.4
SC							
SD	1.4	1.0	0.9	0.7	1.7	1.2	0.8
TN	1.0	0.9	0.9	1.2	1.0	0.8	1.1
TX	1.3	2.9	2.4	2.8	3.2	3.0	2.9
UT	2.9	2.6	3.0	2.8	3.0	2.6	2.4
VA	0.7	0.8	0.9	0.9	0.9	0.8	1.1
WA	0.6	0.4	0.4	0.7	0.7	0.7	0.8
WV							0.1
WI	0.7	0.5	0.7	0.6	0.7	0.8	1.6
WY	0.2	0.1	0.1	0.1	0.1		0.2
US ⁴	214.8	204.7	279.5	216.6	218.5	200.6	206.0
PR	0.1	0.1	0.1		0.1	0.1	0.1

See footnote(s) at end of table.

--continued

**Commercial Sheep and Lamb Slaughter: Number of Head by Month,
State, and United States, 2007 and 2006 Total ^{1 2} (continued)**

State	Aug	Sep	Oct	Nov	Dec	2007 Total	2006 Total
	<i>1,000 Head</i>	<i>1,000 Head</i>	<i>1,000 Head</i>	<i>1,000 Head</i>	<i>1,000 Head</i>	<i>1,000 Head</i>	<i>1,000 Head</i>
AL							
AK						0.1	
AZ							1.5
AR	0.1	0.1	0.1			0.5	0.5
CA							
CO	79.8	74.6	93.5	95.9	82.5	1,047.2	1,053.6
DE-MD	3.2	2.8	3.1	2.7	3.0	34.1	35.7
FL	0.3	0.3	0.2	0.1	0.1	2.4	2.8
GA	0.5	0.5	0.4	0.6	0.5	5.8	3.8
HI							
ID	0.7	0.5	0.5	0.3	0.3	5.2	4.4
IL							169.8
IN	2.6	2.2	2.6	1.9	2.9	26.4	27.0
IA	37.0	32.8	38.2	36.0	32.9	394.7	409.8
KS	0.3	0.3	0.3	0.2	0.2	2.7	3.2
KY	1.0	1.1	1.0	1.0	1.0	11.5	11.4
LA	0.4	0.3	0.3	0.2	0.3	3.3	1.7
MI	19.1	17.1	18.3	16.1	17.2	195.9	179.7
MN	0.4	0.3	0.4	0.3	0.3	3.3	2.9
MS							
MO	0.6	0.5	0.6	0.4	0.4	5.6	5.9
MT	0.4	0.4	0.5	0.4	0.4	3.5	3.6
NE							7.7
NV	0.2	0.1	0.1	0.1	0.1	1.2	0.8
N ENG ³	2.4	2.4	3.4	2.5	2.1	29.3	33.5
NJ	10.0	11.8	11.8	9.4	12.3	125.5	116.5
NM	1.2	0.9	1.4	1.1	1.0	12.2	8.9
NY	3.3	3.0	3.2	3.3	5.0	40.8	40.6
NC	0.7	0.9	0.8	0.7	1.0	7.3	6.6
ND	0.1	0.1	0.1	0.1		0.7	0.6
OH	1.9	1.4	1.5	1.3	1.2	15.3	14.0
OK	0.1	0.1	0.1	0.1	0.1	1.0	0.7
OR	2.3	2.2	2.5	1.9	2.1	25.0	21.7
PA	4.8	4.7	4.9	4.3	4.5	55.0	55.0
SC							
SD	1.2	0.7	1.3	1.0	0.9	12.9	14.3
TN	1.2	1.3	1.3	0.9	1.4	13.1	12.8
TX	2.5	2.4	3.9	3.9	2.9	34.3	62.9
UT	3.5	2.6	3.2	3.0	2.7	34.2	33.1
VA	1.2	1.1	1.6	1.3	1.6	12.7	11.2
WA	0.7	1.0	0.9	0.7	0.9	8.5	2.1
WV	0.1	0.1				0.5	0.4
WI	1.6	1.4	1.8	1.2	1.0	12.5	13.0
WY	0.4	0.1	0.1	0.1	0.1	1.6	1.6
US ⁴	228.1	210.7	248.4	236.7	229.0	2,693.7	2,698.5
PR	0.1		0.1	0.1		0.8	0.8

¹ Includes slaughter in federally inspected and in other slaughter plants, but excludes animals slaughtered on farms.

² US totals and yearly totals are based on unrounded data and may not equal sum of parts.

³ N ENG includes CT, ME, MA, NH, RI, and VT.

⁴ States with no data printed are still included in US total. Data not printed to avoid disclosing individual operations. Puerto Rico is not included in US totals.

**Commercial Sheep and Lamb Slaughter: Total Live Weight
by Month, State, and United States, 2007 and 2006 Total^{1 2}**

State	Jan	Feb	Mar	Apr	May	Jun	Jul
	<i>1,000 Pounds</i>	<i>1,000 Pounds</i>	<i>1,000 Pounds</i>	<i>1,000 Pounds</i>	<i>1,000 Pounds</i>	<i>1,000 Pounds</i>	<i>1,000 Pounds</i>
AL							
AK							
AZ							
AR							
CA							
CO	13,332	13,473	18,804	13,467	14,780	12,332	10,480
DE-MD	280	220	292	316	276	276	288
FL	5	9	12	18	13	10	15
GA	51	41	45	82	83	38	78
HI							
ID	39	34	34	32	56	41	126
IL							
IN	197	146	234	259	241	216	240
IA	5,078	5,001	6,922	4,360	3,669	3,687	4,572
KS	12	19	20	29	23	22	27
KY	108	85	104	110	133	136	153
LA	10	35	41	23	18	17	21
MI	2,174	1,684	2,244	2,060	2,062	1,967	2,011
MN	33	22	27	26	25	31	33
MS							
MO	48	38	60	49	66	51	58
MT	28	31	28	12	16	17	30
NE							
NV	8	6	9	8	17	8	21
N ENG ³	238	194	246	281	247	224	252
NJ	700	575	747	1,036	866	812	814
NM	130	117	156	132	113	109	132
NY	200	209	305	294	295	238	260
NC	40	31	31	35	45	43	44
ND	11				9		
OH	98	77	110	167	120	138	152
OK			8	11	10	8	
OR	239	196	334	256	293	303	299
PA	365	285	496	484	475	456	438
SC							
SD	190	137	114	100	232	146	96
TN	80	71	69	92	80	68	86
TX	105	179	202	257	180	187	207
UT	398	358	423	394	409	371	332
VA	72	76	90	85	86	81	108
WA	78	59	60	98	95	105	98
WV							8
WI	88	70	97	79	96	109	216
WY	21	15	20	13	13		23
US ⁴	30,001	28,708	39,139	29,941	30,978	27,412	26,985
PR	4	3	3		3	3	6

See footnote(s) at end of table.

--continued

**Commercial Sheep and Lamb Slaughter: Total Live Weight
by Month, State, and United States, 2007 and 2006 Total ^{1 2} (continued)**

State	Aug	Sep	Oct	Nov	Dec	2007 Total	2006 Total
	<i>1,000 Pounds</i>	<i>1,000 Pounds</i>	<i>1,000 Pounds</i>	<i>1,000 Pounds</i>	<i>1,000 Pounds</i>	<i>1,000 Pounds</i>	<i>1,000 Pounds</i>
AL							
AK						8	
AZ							145
AR	6	7	7			50	56
CA							
CO	11,231	10,620	13,629	14,559	12,574	159,279	160,272
DE-MD	321	281	314	272	307	3,443	3,646
FL	20	22	17	11	6	157	172
GA	68	75	47	56	55	719	400
HI							
ID	83	68	55	41	34	643	578
IL							22,411
IN	275	240	280	205	311	2,845	2,923
IA	5,086	4,626	5,493	5,152	4,981	58,627	61,026
KS	40	33	39	21	20	303	360
KY	133	134	130	120	125	1,471	1,426
LA	27	28	24	12	17	275	150
MI	2,392	2,172	2,333	2,108	2,227	25,433	23,459
MN	53	33	51	42	37	414	341
MS							
MO	64	57	61	43	55	648	706
MT	60	48	52	33	43	399	366
NE							1,107
NV	27	16	6	6	8	142	100
N ENG ³	223	240	313	229	189	2,876	2,799
NJ	828	981	987	790	1,053	10,188	9,538
NM	166	129	187	161	147	1,678	1,109
NY	290	269	267	254	417	3,299	3,210
NC	59	74	63	56	74	595	559
ND	12	10	6	12		85	77
OH	202	144	158	145	122	1,633	1,482
OK	15	12	10	11	7	103	90
OR	309	296	318	252	283	3,379	2,960
PA	472	469	477	423	435	5,273	5,142
SC							
SD	143	78	173	118	118	1,645	1,778
TN	93	94	102	68	107	1,010	949
TX	275	199	428	396	269	2,883	7,694
UT	471	350	422	400	364	4,691	4,545
VA	123	107	160	128	151	1,267	1,136
WA	104	138	120	102	148	1,205	270
WV	10	7				50	42
WI	199	174	224	145	133	1,630	1,755
WY	53	16	15	15	18	228	216
US ⁴	29,314	27,052	32,760	32,168	30,860	365,319	368,100
PR	4		3	6		39	39

¹ Includes slaughter in federally inspected and in other slaughter plants, but excludes animals slaughtered on farms.

² US totals and yearly totals are based on unrounded data and may not equal sum of parts.

³ N ENG includes CT, ME, MA, NH, RI, and VT.

⁴ States with no data printed are still included in US total. Data not printed to avoid disclosing individual operations. Puerto Rico is not included in US totals.

**Commercial Sheep and Lamb Slaughter: Average Live Weight
by Month, State, and United States, 2007 and 2006 Average^{1 2}**

State	Jan	Feb	Mar	Apr	May	Jun	Jul
	<i>Pounds</i>	<i>Pounds</i>	<i>Pounds</i>	<i>Pounds</i>	<i>Pounds</i>	<i>Pounds</i>	<i>Pounds</i>
AL							
AK							
AZ							
AR							
CA							
CO	153	154	154	161	166	155	147
DE-MD	102	101	104	102	99	99	101
FL	62	56	56	61	58	66	64
GA	133	120	127	129	132	124	130
HI							
ID	127	123	125	120	130	121	114
IL							
IN	109	112	106	104	108	108	107
IA	152	153	155	160	156	153	144
KS	118	108	123	114	116	114	114
KY	123	126	133	132	132	134	130
LA	82	101	99	86	75	84	91
MI	137	135	135	132	133	128	126
MN	122	118	117	126	121	125	134
MS							
MO	123	121	126	126	122	119	110
MT	104	111	111	92	124	105	136
NE							
NV	129	127	137	127	119	125	112
N ENG ³	109	111	98	91	103	105	104
NJ	80	80	74	74	81	82	83
NM	137	131	132	133	136	139	133
NY	84	80	71	71	82	82	88
NC	85	85	84	86	88	79	76
ND	109				114		
OH	108	111	107	106	111	109	106
OK			126	132	121	109	
OR	130	131	142	142	146	131	135
PA	100	96	91	88	94	96	99
SC							
SD	132	131	132	137	139	123	117
TN	79	79	80	76	79	82	78
TX	79	61	85	93	55	62	71
UT	138	137	143	142	138	143	137
VA	102	100	101	99	97	99	102
WA	136	145	148	142	127	142	129
WV							143
WI	131	136	137	136	134	131	135
WY	136	150	144	160	148		151
US ⁴	140	140	140	138	142	137	131
PR	45	49	38		45	50	48

See footnote(s) at end of table.

--continued

**Commercial Sheep and Lamb Slaughter: Average Live Weight
by Month, State, and United States, 2007 and 2006 Average^{1 2} (continued)**

State	Aug	Sep	Oct	Nov	Dec	2007 Average	2006 Average
	<i>Pounds</i>	<i>Pounds</i>	<i>Pounds</i>	<i>Pounds</i>	<i>Pounds</i>	<i>Pounds</i>	<i>Pounds</i>
AL							
AK						124	
AZ							100
AR	91	103	97			103	103
CA							
CO	141	142	146	152	153	152	152
DE-MD	102	101	100	100	101	101	102
FL	69	69	76	78	78	66	63
GA	146	137	116	101	100	125	106
HI							
ID	127	125	122	123	127	123	130
IL							132
IN	107	108	109	111	106	108	108
IA	138	141	144	143	151	149	149
KS	115	110	112	108	105	113	112
KY	128	125	126	125	124	128	125
LA	74	81	74	76	68	83	89
MI	126	127	128	132	130	130	131
MN	136	129	122	132	121	126	119
MS							
MO	110	104	105	116	123	116	120
MT	143	130	111	85	107	114	102
NE							145
NV	128	124	121	118	121	123	126
N ENG ³	94	99	92	90	92	98	84
NJ	83	83	84	84	85	81	82
NM	142	142	135	144	147	137	125
NY	88	88	83	78	83	81	79
NC	86	82	80	79	75	81	85
ND	110	118	111	122		119	123
OH	107	105	105	108	105	107	106
OK	99	104	83	87	102	104	121
OR	133	134	130	132	134	135	136
PA	98	99	97	97	97	96	93
SC							
SD	116	104	133	121	130	127	124
TN	75	72	76	78	74	77	74
TX	108	82	109	101	93	84	122
UT	135	137	133	133	135	138	138
VA	100	98	102	98	96	99	101
WA	141	145	135	137	170	141	129
WV	111	101				106	101
WI	127	125	126	125	136	130	135
WY	139	135	170	149	137	145	136
US ⁴	129	128	132	136	135	136	137
PR	43		49	55		47	49

¹ Includes slaughter in federally inspected and in other slaughter plants, but excludes animals slaughtered on farms.

² Averages are based on unrounded data.

³ N ENG includes CT, ME, MA, NH, RI, and VT.

⁴ States with no data printed are still included in US total. Data not printed to avoid disclosing individual operations. Puerto Rico is not included in US totals.

**Federally Inspected Plants and Head Slaughtered: Number
by Species, State, and United States, 2007¹**

State	Cattle		Calves		Hogs	
	Plants	Head	Plants	Head	Plants	Head
	<i>Number</i>	<i>1,000</i>	<i>Number</i>	<i>1,000</i>	<i>Number</i>	<i>1,000</i>
AL					7	91.0
AK	3	0.7			3	0.6
AZ	3	501.1			2	0.4
AR	7	4.9			7	166.9
CA	21	1,591.1	12	119.5	15	2,570.3
CO	20	2,204.2			16	6.2
DE-MD	19	41.8	14	2.0	15	17.6
FL					13	88.4
GA	10	298.7	3	1.0	12	61.9
HI	7	11.1			6	21.0
ID	11	216.6			9	155.7
IL			7	38.1	26	9,871.2
IN					8	7,716.1
IA					21	29,932.7
KS	22	7,693.5			15	176.5
KY	18	8.2			20	2,752.3
LA	1	0.1	1	0.1	2	1.0
MI	26	553.9	12	22.8	22	102.9
MN	22	738.4			21	9,501.5
MS						
MO	39	59.7	9	0.3	39	6,905.3
MT	8	4.7			8	2.1
NE	26	7,041.0			19	7,410.2
NV	3	1.3				
N ENG ²	16	11.0	15	1.7	16	14.1
NJ	11	29.5	12	80.8	7	110.3
NM	7	6.3	4	3.3	7	0.5
NY	34	25.8	26	156.4	29	28.1
NC	17	212.8	8	1.3	25	11,252.1
ND	11	3.9			11	125.2
OH	11	49.9	3		14	1,019.0
OK	5	1.0			6	4,958.3
OR	13	25.7			13	193.6
PA	77	929.4	38	171.5	78	2,943.0
SC	5	155.2				
SD					5	4,793.3
TN	13	20.1	9	0.9	17	641.8
TX	36	6,085.4	10	11.4	25	356.5
UT	10	584.5			8	40.5
VA	15	6.2	10	0.8	15	2,394.0
WA	11	1,093.1			9	23.4
WV	6	1.8			6	1.6
WI	12	1,666.6			8	498.0
WY						
US ³	626	33,720.7	232	744.8	618	108,138.2
PR	6	44.0	7	10.6	8	58.9

See footnote(s) at end of table.

--continued

**Federally Inspected Plants and Head Slaughtered: Number
by Species, State, and United States, 2007¹ (continued)**

State	Sheep and Lambs		Goats		Bison	
	Plants	Head	Plants	Head	Plants	Head
	<i>Number</i>	<i>1,000</i>	<i>Number</i>	<i>Number</i>	<i>Number</i>	<i>Number</i>
AL						
AK	3	0.1	3	33	3	13
AZ			2	55	1	20
AR	5	0.3				
CA			12	32,396		
CO	17	1,046.5	15	7,294	10	26,680
DE-MD	17	34.1	15	53,736	3	61
FL	9	2.4	8	22,081		
GA			8	30,572		
HI						
ID	8	3.1	5	56	4	871
IL			16	41,602	3	58
IN					1	399
IA	4	392.7	2	2,483	1	54
KS	12	1.4	11	2,949	6	247
KY	14	11.3	14	5,180		
LA						
MI	23	192.7	15	1,049	9	212
MN	13	1.7	8	114	11	2,413
MS						
MO	33	4.9	27	3,889	12	212
MT	8	0.9	4	14	7	491
NE			8	65	5	873
NV	3	1.2				
N ENG ²			15	21,731	5	90
NJ	13	125.5	13	237,562		
NM	9	8.7	8	98		
NY	30	28.5	24	29,051		
NC	11	7.2	12	17,458		
ND	8	0.2				
OH	7	0.4	8	144		
OK	5	0.6				
OR	11	22.6	8	3,985	2	517
PA	59	53.7	43	30,991	9	416
SC						
SD	4	10.5				
TN	11	13.0	11	26,832	4	17
TX	19	3.0	21	39,091	4	2,982
UT	6	27.4			1	217
VA	15	11.9	12	7,043		
WA	8	3.4	7	1,244		
WV	4	0.2				
WI	7	3.2	5	180		
WY						
US ³	480	2,528.6	397	639,364	132	50,100
PR	5	0.8	4	57		

¹ US totals are based on unrounded data and may not equal sum of parts.

² N ENG includes CT, ME, MA, NH, RI, and VT.

³ States with no data printed are still included in US total. Data not printed to avoid disclosing individual operations. Puerto Rico is not included in US totals.

**Federally Inspected Plants and Head Slaughtered: Number
by Species, State, and United States, 2006¹**

State	Cattle		Calves		Hogs	
	Plants	Head	Plants	Head	Plants	Head
	<i>Number</i>	<i>1,000</i>	<i>Number</i>	<i>1,000</i>	<i>Number</i>	<i>1,000</i>
AL					7	98.7
AK					3	1.1
AZ						
AR	8	4.8			8	150.8
CA	24	1,526.8	12	91.3	16	2,498.2
CO	20	2,109.6			16	7.3
DE-MD	19	43.1	12	2.0	15	18.4
FL					14	95.9
GA	9	264.5			13	50.4
HI	9	10.5			6	22.5
ID					9	144.8
IL			9	44.3	25	9,315.1
IN			1	2.8	8	7,338.9
IA					21	29,627.3
KS	20	7,509.6				
KY	18	7.5			20	2,460.0
LA					2	0.7
MI	26	487.4	10	32.1	24	102.1
MN	21	697.1			21	9,355.0
MS						
MO			11	0.3		
MT	8	4.9			8	2.6
NE	32	7,038.0			23	7,201.5
NV						
N ENG ²	20	11.1	16	3.3	19	16.4
NJ	11	26.5	12	86.2	7	107.0
NM	2	7.5			2	0.2
NY	39	28.8	30	110.7	33	32.7
NC	16	191.2	7	0.7	24	11,228.7
ND					10	148.0
OH	11	42.8			14	1,034.9
OK	5	0.6			7	4,880.7
OR	13	21.6			12	197.3
PA	81	842.0	36	178.0	77	2,946.0
SC	6	152.3				
SD					5	4,346.8
TN	12	11.5	6	1.1	16	635.5
TX	36	6,461.9	7	8.3	24	334.0
UT	10	625.7			8	27.9
VA	14	2.5	11	0.7	14	2,058.8
WA	11	937.3			7	22.7
WV	4	0.7			4	0.6
WI	9	1,538.5			6	471.8
WY						
US ³	636	33,145.0	238	698.7	614	103,688.5
PR	6	43.2	7	10.3	8	59.8

See footnote(s) at end of table.

--continued

**Federally Inspected Plants and Head Slaughtered: Number
by Species, State, and United States, 2006¹ (continued)**

State	Sheep and Lambs		Goats		Bison	
	Plants	Head	Plants	Head	Plants	Head
	<i>Number</i>	<i>1,000</i>	<i>Number</i>	<i>Number</i>		
AL						
AK			3	57	3	11
AZ	2	0.2	2	60	1	12
AR	6	0.3	6	333		
CA			14	25,084		
CO	16	1,052.9	14	5,932	10	18,857
DE-MD	17	35.7	16	37,995		
FL	6	2.8	8	19,145		
GA	6	1.9	7	31,886		
HI						
ID	8	2.4	5	33	4	1,561
IL	16	152.7	14	36,152	4	50
IN	3	14.8	3	14,691	1	330
IA	5	407.7	2	2,442	1	71
KS			9	2,405		
KY	17	11.3	14	6,062	3	44
LA						
MI	25	176.5	14	3,107	9	199
MN	14	1.8	9	91	9	1,829
MS						
MO	35	5.2	29	3,545	9	278
MT	8	1.3	5	31	8	1,012
NE			8	65	8	2,375
NV	3	0.8				
N ENG ²	21	31.6	18	19,623	6	155
NJ	12	116.5	13	216,078		
NM	2	1.4	2	18		
NY	34	28.1	25	38,653		
NC	12	6.4	12	14,444		
ND	6	0.1				
OH	6	0.3	6	61		
OK	5	0.3				
OR	11	20.0	8	3,286	2	400
PA	62	53.2	42	31,927	8	393
SC						
SD	4	11.8			3	972
TN	10	12.7	9	27,161		
TX	20	41.3	20	32,991	5	1,299
UT	7	27.6	4	82	2	278
VA	14	9.7	10	7,837		
WA			6	287		
WV	3	0.1				
WI	4	2.0				
WY						
US ³	484	2,547.0	380	584,256	134	42,529
PR	6	0.8	5	54		

¹ US totals are based on unrounded data and may not equal sum of parts.

² N ENG includes CT, ME, MA, NH, RI, and VT.

³ States with no data printed are still included in US total. Data not printed to avoid disclosing individual operations. Puerto Rico is not included in US totals.

**Cattle: Number of Federally Inspected Plants and Head Slaughtered,
by Size Group, United States, 2007**

Size Group	Plants	Head	Size Group	Plants	Head
	<i>Number</i>	<i>1,000</i>		<i>Number</i>	<i>1,000</i>
1 - 999	454	150.8	300,000 - 499,999	7	2,734.9
1,000 - 9,999	91	244.5	500,000 - 999,999	12	7,303.6
10,000 - 49,999	18	398.2	1,000,000 +	14	18,325.1
50,000 - 99,999	8	511.2			
100,000 - 199,999	13	1,845.3	Total ¹	626	33,720.7
200,000 - 299,999	9	2,207.1			

¹ Total may not add due to rounding.

**Calves: Number of Federally Inspected Plants and Head Slaughtered,
by Size Group, United States, 2007**

Size Group	Plants	Head	Size Group	Plants	Head
	<i>Number</i>	<i>1,000</i>		<i>Number</i>	<i>1,000</i>
1 - 99	172	2.6	25,000 - 49,999	4	134.5
100 - 999	32	12.1	50,000 +	6	469.1
1,000 - 9,999	14	56.4			
10,000 - 24,999	4	70.2	Total ¹	232	744.8

¹ Total may not add due to rounding.

**Hogs: Number of Federally Inspected Plants and Head Slaughtered,
by Size Group, United States, 2007**

Size Group	Plants	Head	Size Group	Plants	Head
	<i>Number</i>	<i>1,000</i>		<i>Number</i>	<i>1,000</i>
1 - 999	385	124.9	1,000,000 - 1,999,999	2	3,784.8
1,000 - 9,999	116	313.5	2,000,000 - 2,999,999	12	29,007.7
10,000 - 99,999	64	2,730.6	3,000,000 - 3,999,999	2	7,445.5
100,000 - 249,999	9	1,503.0	4,000,000 +	11	55,265.8
250,000 - 499,999	12	4,077.4			
500,000 - 999,999	5	3,884.9	Total ¹	618	108,138.2

¹ Total may not add due to rounding.

**Sheep and Lambs: Number of Federally Inspected Plants and Head Slaughtered,
by Size Group, United States, 2007**

Size Group	Plants	Head	Size Group	Plants	Head
	<i>Number</i>	<i>1,000</i>		<i>Number</i>	<i>1,000</i>
1 - 999	400	47.5	100,000 - 249,999	2	299.8
1,000 - 9,999	60	179.0	250,000+	4	1,719.7
10,000 - 24,999	11	169.1			
25,000 - 99,999	3	113.5	Total ¹	480	2,528.6

¹ Total may not add due to rounding.

**Cattle: Number of Federally Inspected Plants and Head Slaughtered,
by Size Group, United States, 2006**

Size Group	Plants	Head	Size Group	Plants	Head
	<i>Number</i>	<i>1,000</i>		<i>Number</i>	<i>1,000</i>
1 - 999	468	151.3	300,000 - 499,999	12	4,980.1
1,000 - 9,999	90	281.8	500,000 - 999,999	7	4,437.0
10,000 - 49,999	17	451.9	1,000,000 +	14	18,482.2
50,000 - 99,999	9	650.1			
100,000 - 199,999	11	1,730.4	Total ¹	636	
200,000 - 299,999	8	1,980.2			

¹ Total may not add due to rounding.

**Calves: Number of Federally Inspected Plants and Head Slaughtered,
by Size Group, United States, 2006**

Size Group	Plants	Head	Size Group	Plants	Head
	<i>Number</i>	<i>1,000</i>		<i>Number</i>	<i>1,000</i>
1 - 99	171	2.1	25,000 - 49,999	5	182.0
100 - 999	39	12.3	50,000 +	5	378.6
1,000 - 9,999	14	44.7			
10,000 - 24,999	4	79.0	Total ¹	238	

¹ Total may not add due to rounding.

**Hogs: Number of Federally Inspected Plants and Head Slaughtered,
by Size Group, United States, 2006**

Size Group	Plants	Head	Size Group	Plants	Head
	<i>Number</i>	<i>1,000</i>		<i>Number</i>	<i>1,000</i>
1 - 999	380	124.3	1,000,000 - 1,999,999	4	6,932.6
1,000 - 9,999	118	322.2	2,000,000 - 2,999,999	11	25,633.6
10,000 - 99,999	63	2,727.4	3,000,000 - 3,999,999	3	10,329.4
100,000 - 249,999	11	1,728.4	4,000,000 +	10	49,098.9
250,000 - 499,999	9	3,089.0			
500,000 - 999,999	5	3,702.7	Total ¹	614	

¹ Total may not add due to rounding.

**Sheep and Lambs: Number of Federally Inspected Plants and Head Slaughtered,
by Size Group, United States, 2006**

Size Group	Plants	Head	Size Group	Plants	Head
	<i>Number</i>	<i>1,000</i>		<i>Number</i>	<i>1,000</i>
1 - 999	401	42.8	100,000 - 249,999	2	286.1
1,000 - 9,999	64	207.6	250,000+	4	1,723.0
10,000 - 24,999	9	141.7			
25,000 - 99,999	4	145.8	Total ¹	484	

¹ Total may not add due to rounding.

**Livestock Slaughter Plants: Number by Type of Inspection,
State, and United States, January 1, 2007-08¹**

State	Under Federal Inspection		Other		Total	
	2007	2008	2007	2008	2007	2008
	<i>Number</i>	<i>Number</i>	<i>Number</i>	<i>Number</i>	<i>Number</i>	<i>Number</i>
AL	7	6	33	33	40	39
AK	3	3	0	0	3	3
AZ	3	2	11	11	14	13
AR	9	9	31	59	40	68
CA	32	31	37	38	69	69
CO	26	23	20	20	46	43
DE-MD	20	20	3	3	23	23
FL	20	21	0	0	20	21
GA	15	15	62	60	77	75
HI	12	10	0	0	12	10
ID	12	12	26	21	38	33
IL	34	35	58	68	92	103
IN	8	8	81	84	89	92
IA	25	25	124	116	149	141
KS	22	25	81	80	103	105
KY	20	20	28	28	48	48
LA	2	2	44	42	46	44
MI	29	30	35	35	64	65
MN	24	26	91	104	115	130
MS	6	5	17	17	23	22
MO	41	42	83	164	124	206
MT	8	8	196	145	204	153
NE	32	31	74	98	106	129
NV	3	3	0	0	3	3
N ENG ²	21	18	16	16	37	34
NJ	15	16	2	1	17	17
NM	2	9	16	6	18	15
NY	36	36	30	31	66	67
NC	30	31	29	29	59	60
ND	11	11	54	50	65	61
OH	16	17	131	128	147	145
OK	7	8	62	64	69	72
OR	13	13	16	17	29	30
PA	91	91	159	154	250	245
SC	8	9	22	20	30	29
SD	9	7	88	87	97	94
TN	19	18	8	8	27	26
TX	45	47	71	74	116	121
UT	11	10	20	21	31	31
VA	17	19	41	32	58	51
WA	12	13	7	8	19	21
WV	5	6	21	21	26	27
WI	14	17	105	99	119	116
WY	0	0	27	27	27	27
US ³	795	808	2,060	2,119	2,855	2,927
PR	9	8	0	0	9	8

¹ Data includes 'Temporarily Closed' plants.

² N ENG includes CT, ME, MA, NH, RI, and VT.

³ Puerto Rico is not included in US totals.

**Annual Federally Inspected Slaughter: Number of Head
by Species, Class, and Week, United States, 2007 and 2006 Total ¹**

Week Ending	Total Cattle	Steers	Heifers	Dairy Cows	Other Cows	Bulls	Total Calves
	<i>1,000 Head</i>	<i>1,000 Head</i>	<i>1,000 Head</i>	<i>1,000 Head</i>	<i>1,000 Head</i>	<i>1,000 Head</i>	<i>1,000 Head</i>
Jan 6, 2007	526.0	268.2	156.5	44.8	49.2	7.2	14.5
Jan 13	599.5	301.0	164.7	54.2	68.7	10.9	16.2
Jan 20	620.1	313.2	187.9	50.4	59.8	8.9	16.2
Jan 27	632.6	323.3	187.1	50.8	61.9	9.4	16.6
Feb 3	641.9	311.0	207.2	50.8	63.4	9.4	16.3
Feb 10	620.6	299.0	207.6	47.8	58.1	8.2	15.9
Feb 17	620.2	310.8	192.8	49.9	58.5	8.2	15.6
Feb 24	635.2	311.7	204.2	51.4	59.2	8.7	17.2
Mar 3	623.4	314.2	188.4	51.0	60.3	9.6	16.7
Mar 10	634.0	320.8	192.3	51.6	59.5	9.9	17.7
Mar 17	631.3	323.0	182.9	52.8	61.9	10.7	16.1
Mar 24	617.9	314.3	184.6	49.4	58.6	11.1	15.3
Mar 31	610.9	303.9	186.1	55.3	55.7	9.9	14.3
Apr 7	600.9	313.4	169.5	54.7	53.3	10.0	13.3
Apr 14	613.0	320.7	180.9	49.4	52.5	9.4	13.3
Apr 21	652.4	337.0	189.6	51.5	63.5	10.8	13.4
Apr 28	674.6	353.1	195.1	50.5	64.3	11.6	12.9
May 5	663.5	349.4	192.7	47.2	62.8	11.4	13.0
May 12	672.8	355.8	201.1	41.9	62.6	11.5	12.7
May 19	703.4	379.8	204.0	42.2	66.0	11.4	12.7
May 26	701.2	379.1	199.7	41.6	68.7	12.1	13.5
Jun 2	610.3	319.6	185.9	37.1	57.3	10.4	11.7
Jun 9	702.6	369.6	215.4	41.5	64.1	12.0	13.6
Jun 16	713.1	375.5	222.5	40.1	63.5	11.4	14.6
Jun 23	699.7	375.9	213.6	39.8	58.9	11.4	14.5
Jun 30	695.6	380.4	203.4	41.0	59.7	11.1	14.9
Jul 7	583.5	320.6	175.4	33.6	45.5	8.4	12.7
Jul 14	678.5	372.4	195.8	43.6	56.3	10.5	15.2
Jul 21	681.9	369.3	197.4	45.1	59.0	11.1	14.1
Jul 28	668.7	359.2	201.8	42.0	54.6	11.2	13.5
Aug 4	668.4	364.4	196.4	44.2	52.7	10.8	14.9
Aug 11	671.1	356.6	207.3	43.8	52.5	10.9	14.6
Aug 18	667.7	362.0	196.5	44.6	53.6	10.9	14.3
Aug 25	689.7	361.1	211.7	47.5	58.1	11.4	12.7
Sep 1	705.2	375.0	206.1	51.0	60.4	12.8	14.1
Sep 8	605.9	321.9	184.3	43.2	46.5	10.0	12.6
Sep 15	645.0	329.8	190.9	51.2	60.7	12.4	14.6
Sep 22	646.6	327.5	195.1	49.8	61.9	12.3	13.7
Sep 29	656.3	341.4	190.3	52.0	60.2	12.4	13.9
Oct 6	671.3	332.1	210.9	53.4	62.3	12.7	14.3
Oct 13	638.7	318.8	193.3	53.1	61.8	11.7	13.5
Oct 20	677.0	328.9	215.5	56.0	64.8	11.8	13.5
Oct 27	672.8	318.4	221.3	54.1	67.2	11.7	13.6
Nov 3	661.7	319.0	207.7	51.2	72.1	11.8	14.2
Nov 10	643.3	312.9	190.2	51.9	76.4	11.8	13.9
Nov 17	647.7	310.7	195.6	54.7	75.4	11.2	13.4
Nov 24	584.2	278.9	194.5	40.6	61.5	8.7	11.0
Dec 1	668.0	314.7	219.5	51.4	71.7	10.7	13.9
Dec 8	667.1	322.2	203.4	53.3	76.2	11.9	13.6
Dec 15	650.9	316.4	202.8	53.5	67.7	10.4	15.4
Dec 22	661.3	329.2	202.4	50.3	69.1	10.3	15.8
Dec 29	487.9	247.4	152.2	34.9	47.2	6.3	12.5
2007 Total	33,617.1	17,234.5	10,174.2	2,488.8	3,167.0	552.6	742.3
2006 Total ¹	33,144.5	17,477.9	9,819.4	2,353.5	2,982.7	511.0	698.5

See footnote(s) at end of table.

--continued

**Annual Federally Inspected Slaughter: Number of Head
by Species, Class, and Week, United States, 2007 and 2006 Total ¹ (continued)**

Week Ending	Total Hogs	Barrows & Gilts	Sows	Boars	Total Sheep	Mature Sheep	Lambs & Yearlings
	<i>1,000 Head</i>	<i>1,000 Head</i>	<i>1,000 Head</i>	<i>1,000 Head</i>	<i>1,000 Head</i>	<i>1,000 Head</i>	<i>1,000 Head</i>
Jan 6, 2007	1,844.7	1,784.8	52.4	7.6	42.8	2.1	40.8
Jan 13	2,100.6	2,024.9	66.2	9.5	45.1	2.1	43.0
Jan 20	2,063.1	1,990.5	63.1	9.5	43.3	1.9	41.5
Jan 27	2,073.6	2,000.6	63.9	9.2	44.3	1.7	42.6
Feb 3	2,048.1	1,974.2	64.2	9.6	47.4	1.8	45.6
Feb 10	1,958.6	1,891.0	59.4	8.2	48.7	2.0	46.7
Feb 17	2,007.3	1,938.5	61.4	7.3	50.1	1.9	48.3
Feb 24	2,007.0	1,933.3	63.1	10.6	48.3	1.9	46.4
Mar 3	1,890.2	1,819.5	62.3	8.4	48.9	2.1	46.8
Mar 10	2,123.2	2,047.8	65.7	9.7	54.8	2.2	52.6
Mar 17	2,133.9	2,057.3	65.5	11.1	59.6	2.1	57.5
Mar 24	2,100.6	2,024.7	66.0	9.9	61.5	2.2	59.3
Mar 31	2,089.7	2,014.9	64.5	10.3	72.3	2.0	70.3
Apr 7	2,051.7	1,979.8	62.0	9.9	60.5	2.8	57.7
Apr 14	1,966.2	1,896.9	60.1	9.2	42.5	2.1	40.4
Apr 21	1,989.2	1,916.6	63.0	9.6	44.8	2.0	42.8
Apr 28	1,984.4	1,911.2	62.9	10.3	45.9	2.3	43.6
May 5	1,970.4	1,898.5	62.7	9.3	45.0	2.3	42.7
May 12	1,938.9	1,866.9	62.7	9.3	46.0	2.5	43.5
May 19	1,958.0	1,884.7	64.0	9.3	45.9	2.4	43.5
May 26	1,988.7	1,914.3	64.4	10.0	46.3	2.5	43.7
Jun 2	1,721.8	1,657.4	56.2	8.1	40.7	1.9	38.8
Jun 9	1,908.9	1,834.5	64.9	9.5	44.2	2.2	42.0
Jun 16	1,928.1	1,856.5	62.0	9.6	43.9	2.1	41.8
Jun 23	1,935.0	1,864.5	61.8	8.7	44.8	2.1	42.7
Jun 30	1,945.8	1,873.1	63.5	9.3	45.7	2.4	43.3
Jul 7	1,645.6	1,584.8	53.6	7.1	39.7	2.1	37.5
Jul 14	1,950.9	1,877.4	63.4	10.0	44.4	2.1	42.2
Jul 21	1,958.3	1,884.6	64.5	9.2	43.4	2.0	41.4
Jul 28	1,975.1	1,903.9	62.7	8.5	43.9	2.0	41.9
Aug 4	1,973.4	1,910.8	54.3	8.3	45.3	2.2	43.1
Aug 11	2,005.2	1,932.2	63.5	9.5	46.5	2.3	44.2
Aug 18	1,986.8	1,913.9	64.3	8.6	46.5	2.0	44.4
Aug 25	2,072.4	1,997.2	65.7	9.4	46.1	2.1	44.0
Sep 1	2,099.8	2,022.4	67.7	9.7	49.1	2.7	46.4
Sep 8	1,932.0	1,869.1	55.4	7.5	41.9	2.2	39.7
Sep 15	2,228.2	2,152.7	66.1	9.3	51.4	2.4	49.0
Sep 22	2,243.5	2,166.3	67.7	9.5	51.8	2.3	49.4
Sep 29	2,219.9	2,142.7	67.5	9.6	50.0	2.1	48.0
Oct 6	2,310.1	2,233.2	68.4	8.5	49.7	2.7	47.0
Oct 13	2,339.9	2,263.8	66.7	9.4	50.3	2.1	48.2
Oct 20	2,330.4	2,253.9	67.1	9.4	50.1	2.3	47.7
Oct 27	2,313.5	2,237.0	67.5	9.0	50.6	2.1	48.5
Nov 3	2,315.8	2,237.7	68.6	9.5	52.8	2.4	50.4
Nov 10	2,360.6	2,282.6	68.2	9.8	52.3	2.3	49.9
Nov 17	2,374.3	2,291.0	73.2	10.1	53.2	2.3	50.9
Nov 24	2,023.1	1,966.3	49.1	7.6	43.6	2.0	41.7
Dec 1	2,391.3	2,307.5	74.0	9.8	54.7	2.3	52.4
Dec 8	2,376.4	2,292.5	74.2	9.6	52.4	2.2	50.2
Dec 15	2,363.0	2,284.3	69.9	8.8	51.1	2.2	48.9
Dec 22	2,477.4	2,392.5	74.5	10.4	56.5	3.8	52.8
Dec 29	1,770.2	1,726.5	38.7	5.0	40.3	2.3	38.0
2007 Total	107,764.4	103,983.7	3,304.5	476.2	2,520.8	115.2	2,405.6
2006 Total ¹	103,688.1	100,112.9	3,227.1	348.1	2,545.5	118.0	2,427.5

See footnote(s) at end of table.

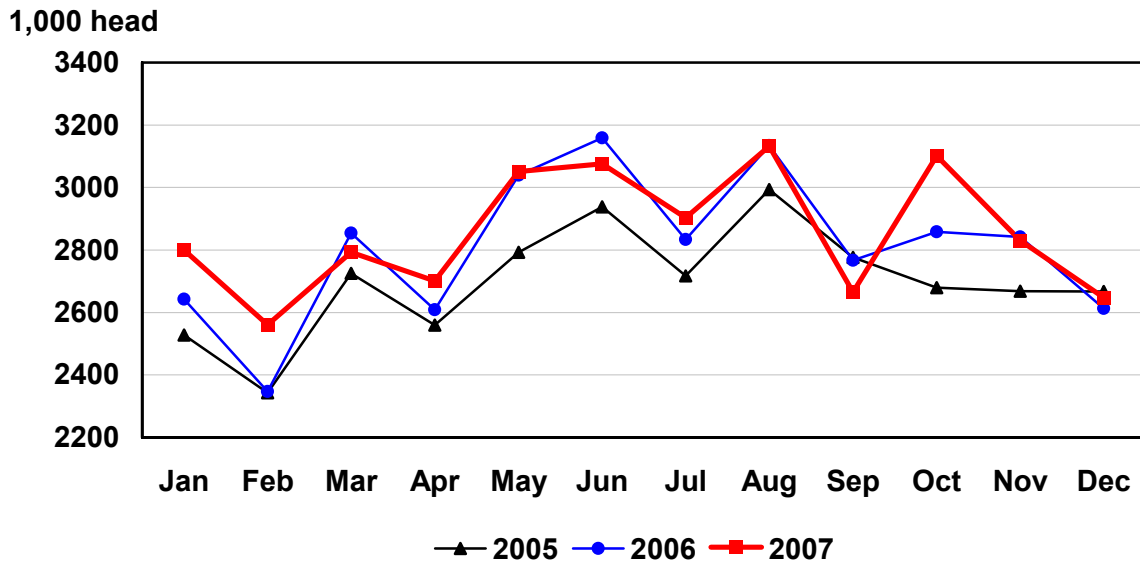
--continued

**Annual Federally Inspected Slaughter: Number of Head
by Species and Week, United States, 2007 and 2006 Total ¹ (continued)**

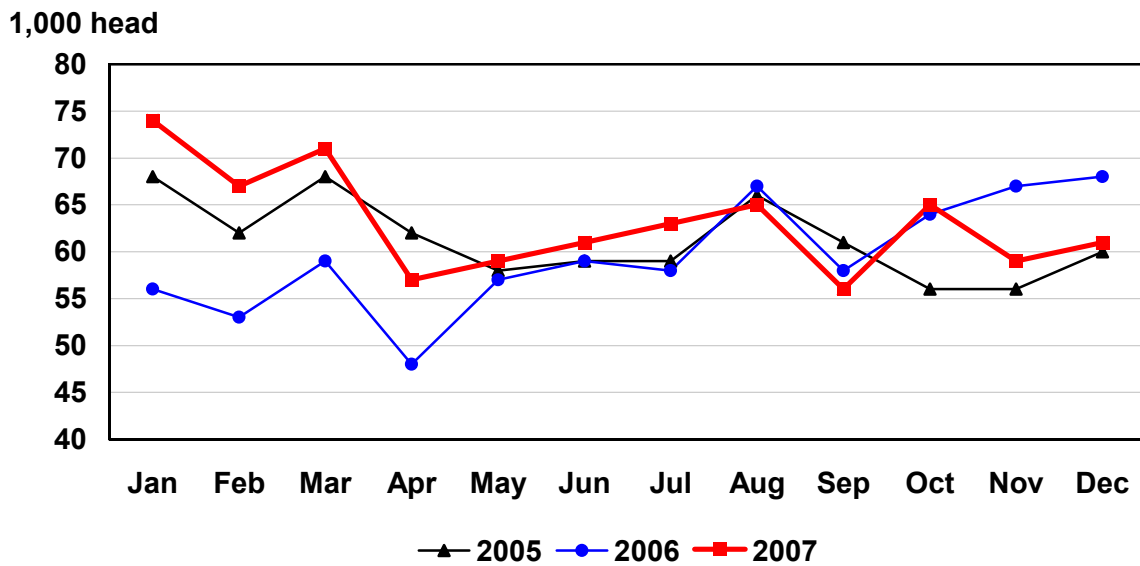
Week Ending	Goats	Equine	Bison
	<i>Total Head</i>	<i>Total Head</i>	<i>Total Head</i>
Jan 6, 2007	12,107	1,695	681
Jan 13	11,263	2,073	1,006
Jan 20	9,553	1,504	1,137
Jan 27	9,269	1,399	841
Feb 3	9,575	789	809
Feb 10	9,906	1,133	637
Feb 17	10,354	960	923
Feb 24	10,367	1,102	888
Mar 3	10,440	1,051	921
Mar 10	10,283	1,141	1,058
Mar 17	11,745	1,113	827
Mar 24	11,158	1,219	1,011
Mar 31	13,935	706	1,075
Apr 7	16,653		888
Apr 14	11,358		934
Apr 21	10,509		927
Apr 28	10,580		1,039
May 5	11,580		1,005
May 12	12,379	989	1,084
May 19	12,082	742	1,258
May 26	13,185	644	1,127
Jun 2	11,010	92	911
Jun 9	12,926	1,151	1,065
Jun 16	12,961	749	1,065
Jun 23	12,447	1,028	1,068
Jun 30	12,849	568	889
Jul 7	11,612		810
Jul 14	12,066		1,192
Jul 21	12,074		938
Jul 28	11,746	865	1,088
Aug 4	11,494	813	1,000
Aug 11	12,079	832	921
Aug 18	12,150	806	889
Aug 25	11,858	917	912
Sep 1	13,518	976	1,288
Sep 8	12,913	790	984
Sep 15	15,781	985	1,300
Sep 22	13,079	935	1,160
Sep 29	12,402		961
Oct 6	13,901		752
Oct 13	14,566		875
Oct 20	11,916		850
Oct 27	12,249		698
Nov 3	12,513		904
Nov 10	13,190		930
Nov 17	13,240		1,373
Nov 24	13,384		526
Dec 1	11,666		1,115
Dec 8	11,813		1,083
Dec 15	13,644		849
Dec 22	18,725		957
Dec 29	13,847		624
2007 Total	637,900	29,767	50,053
2006 Total ¹	581,878	104,899	42,529

¹ Includes data from week ending Jan 7, 2006 through Dec 30, 2006.

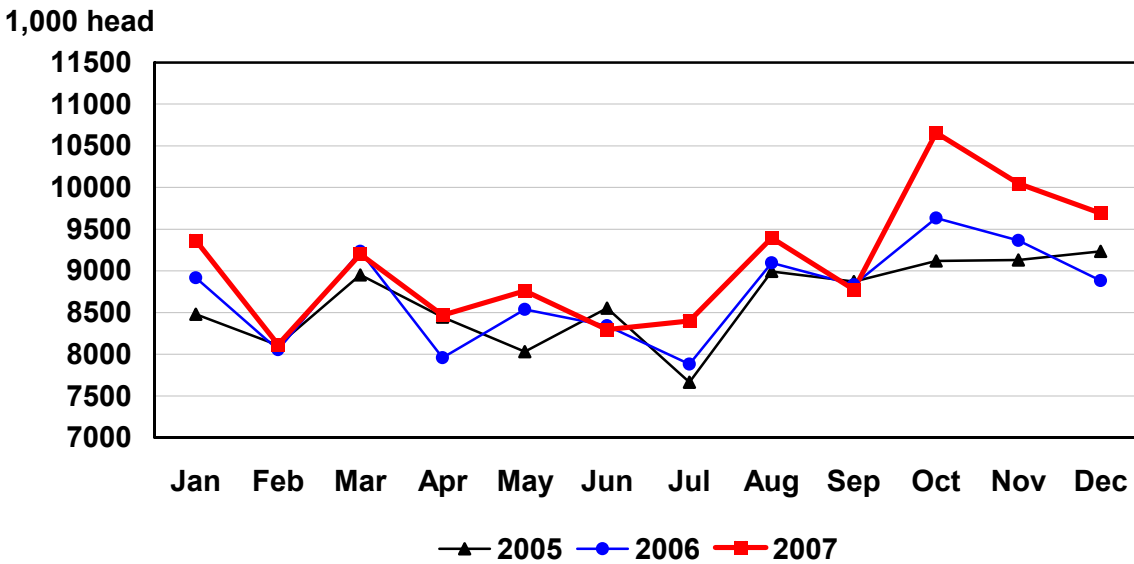
U.S. Monthly Commercial Slaughter Cattle



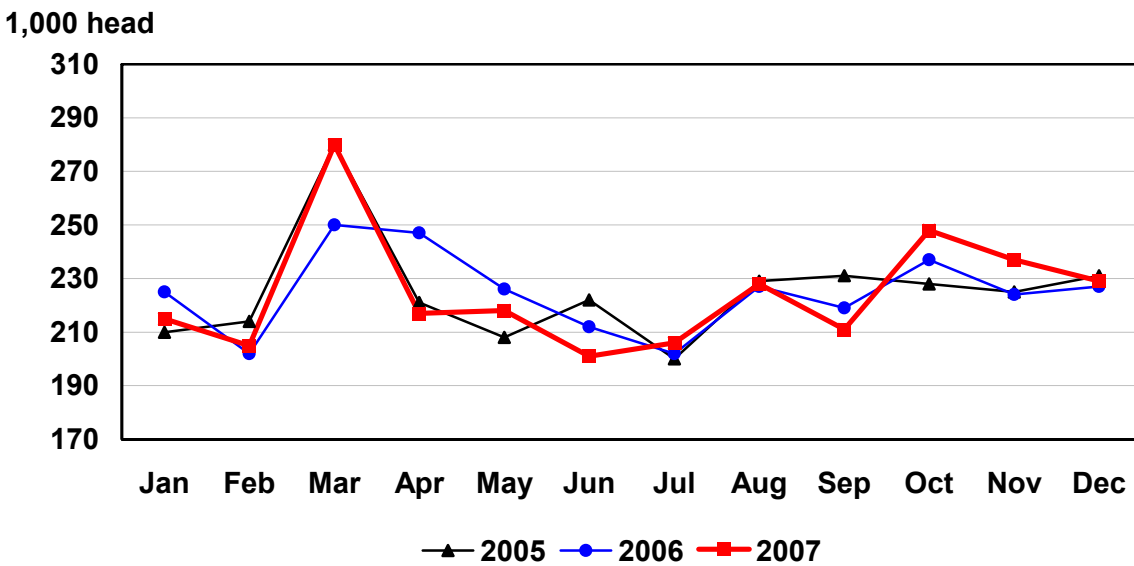
U.S. Monthly Commercial Slaughter Calves



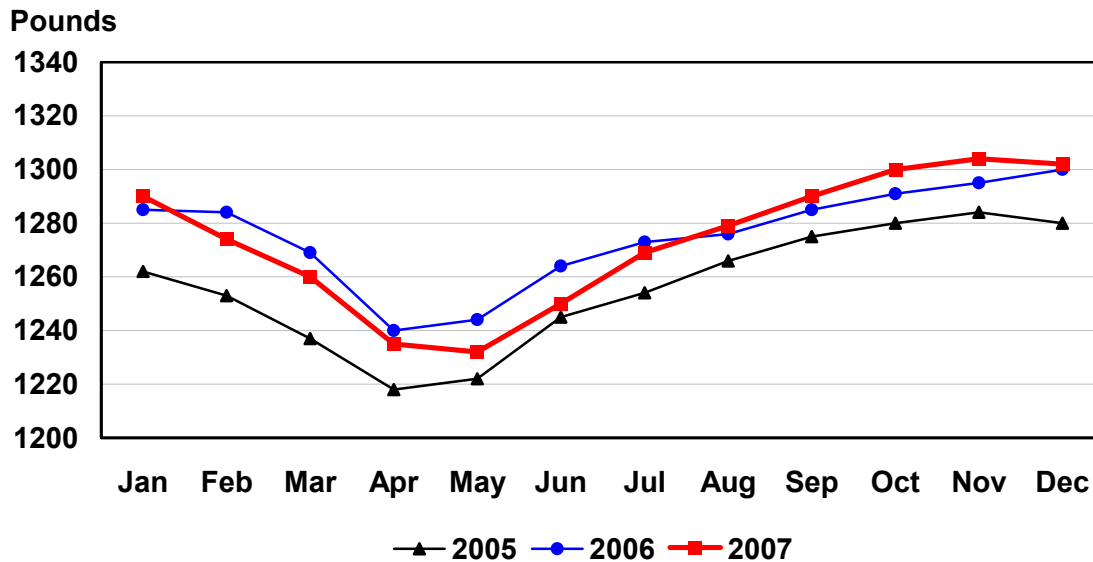
U.S. Monthly Commercial Slaughter Hogs



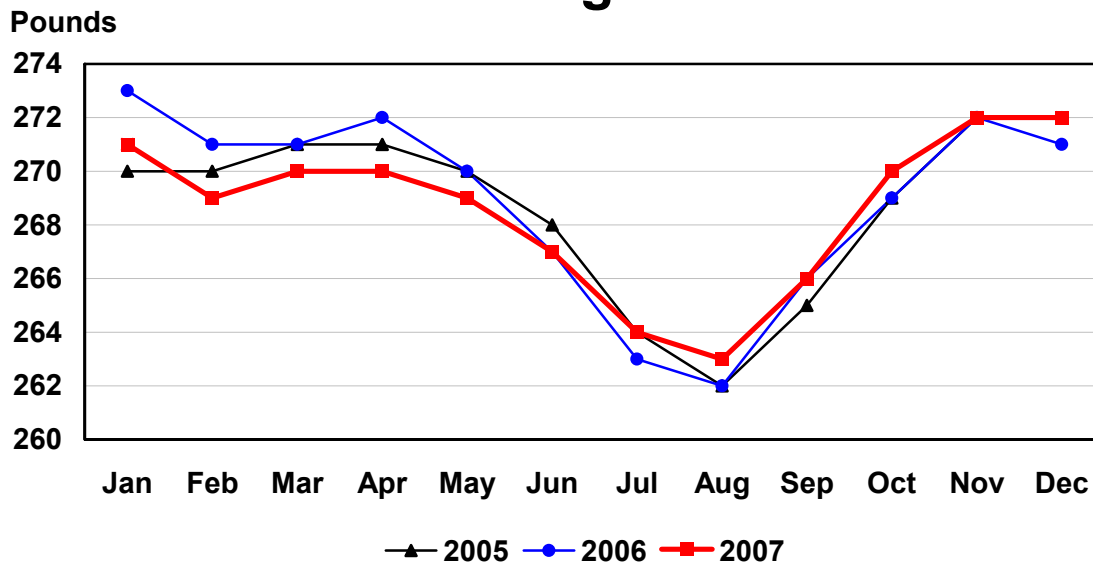
U.S. Monthly Commercial Slaughter Sheep



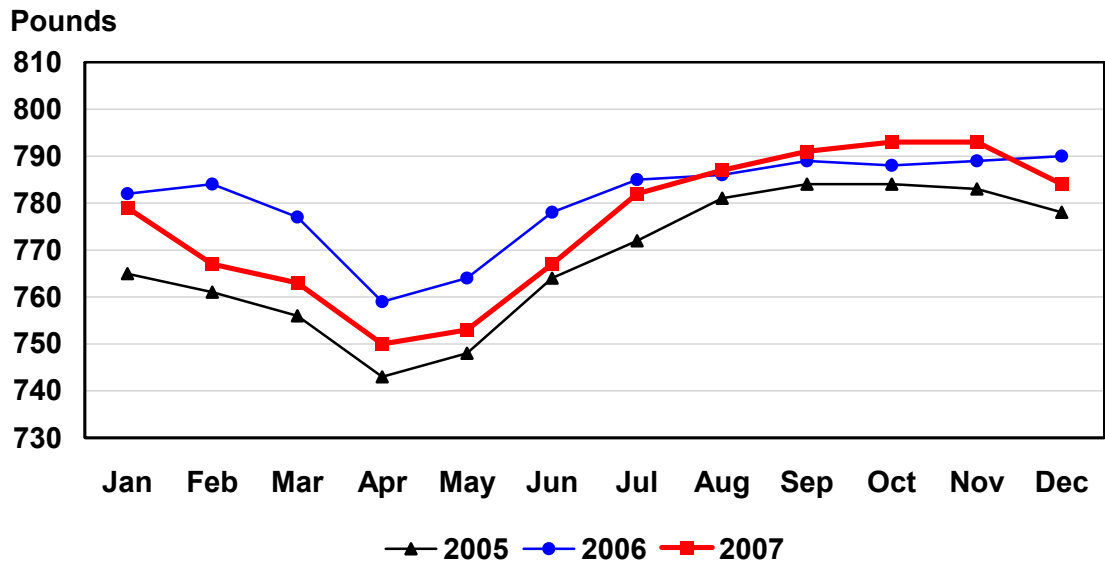
U.S. Monthly Commercial Slaughter Average Live Weight Cattle



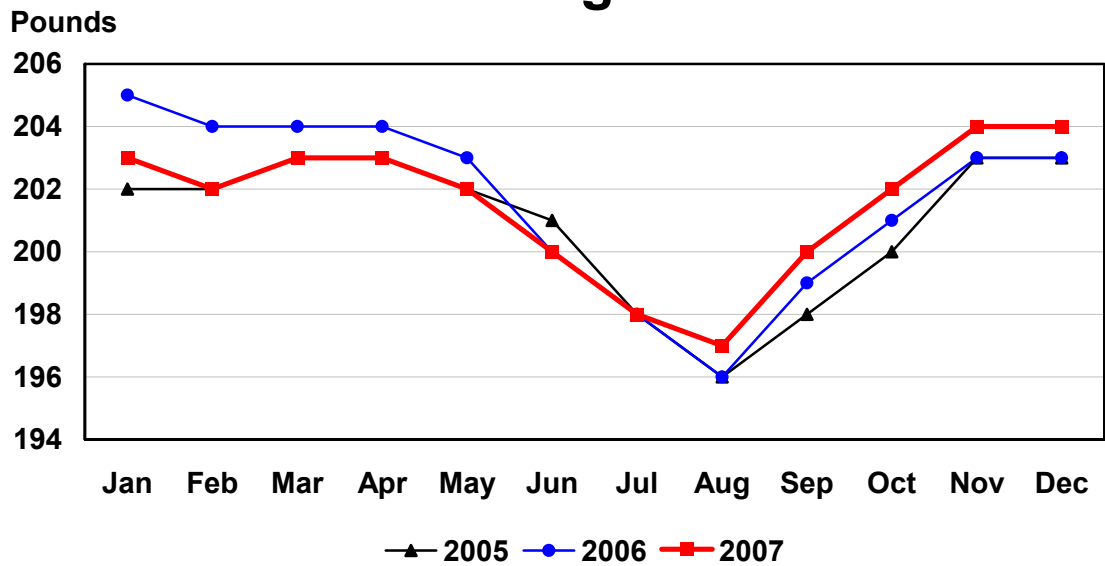
U.S. Monthly Commercial Slaughter Average Live Weight Hogs



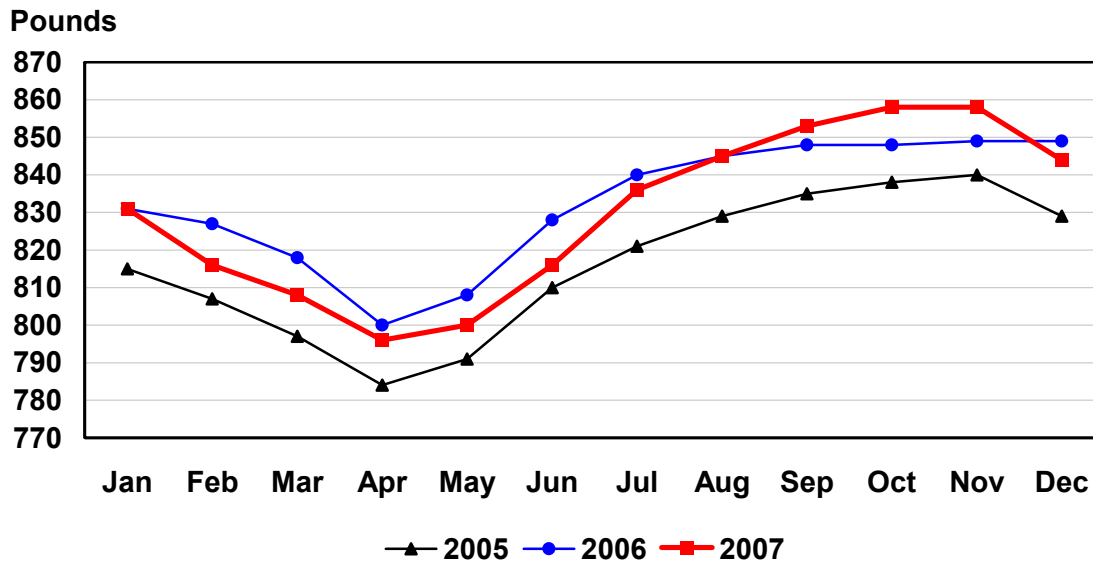
U.S. Monthly Federally Inspected Average Dressed Weight Cattle



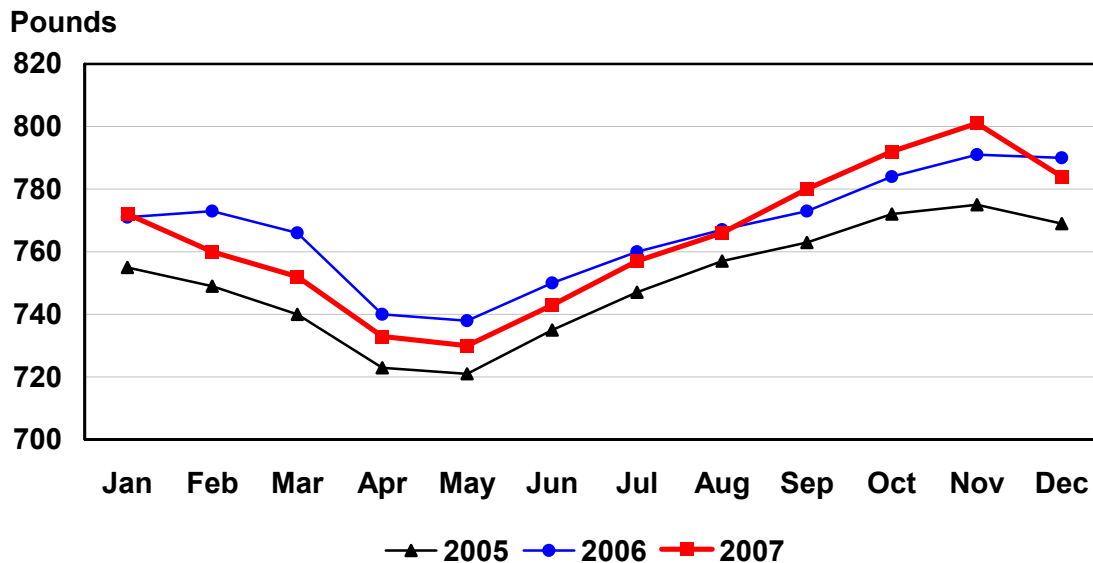
U.S. Monthly Federally Inspected Average Dressed Weight Hogs



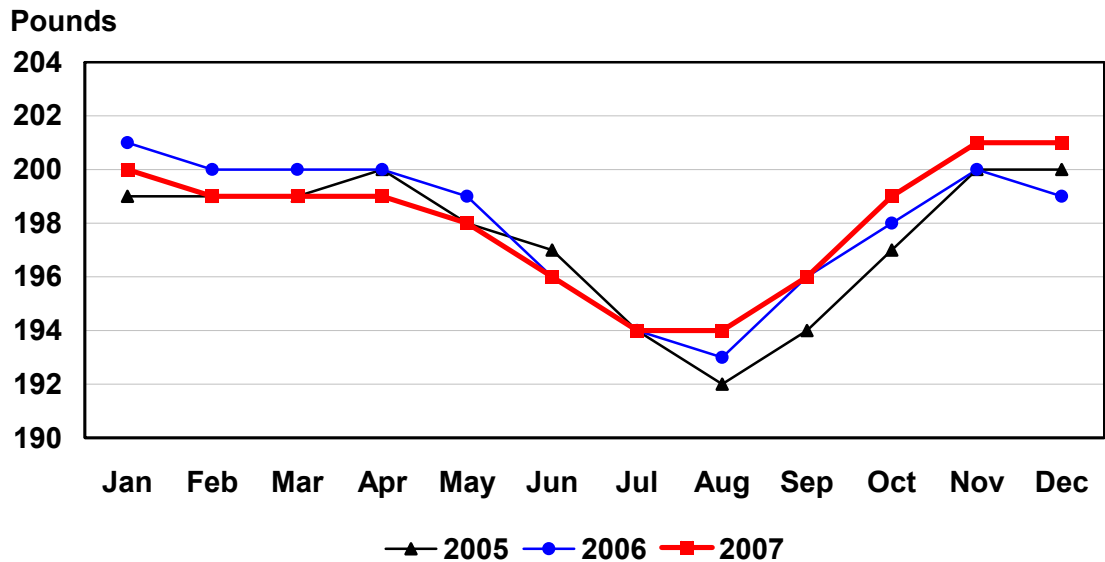
U.S. Monthly Federally Inspected Average Dressed Weight Steers



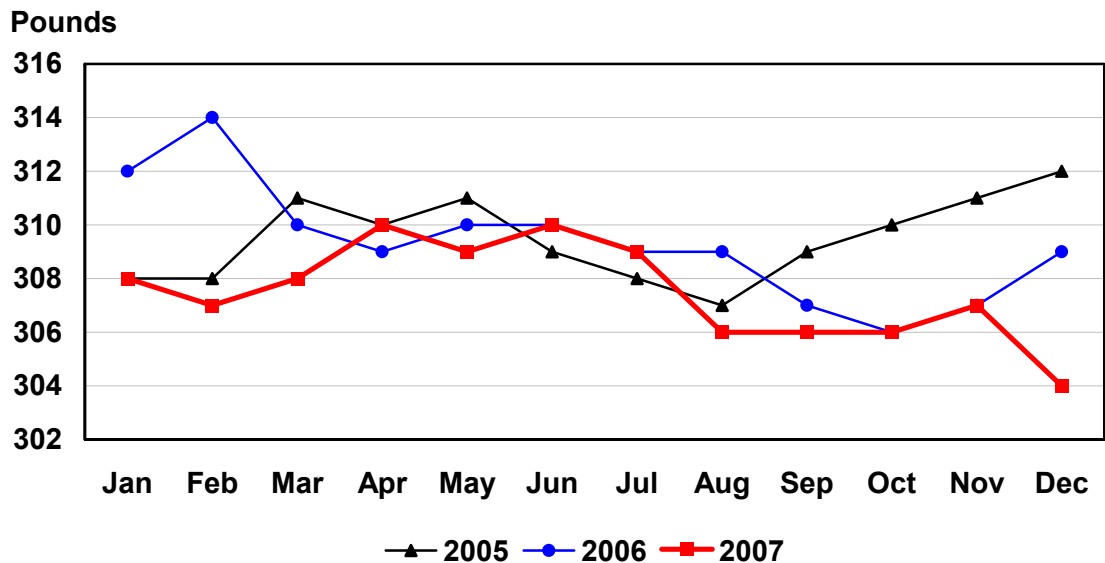
U.S. Monthly Federally Inspected Average Dressed Weight Heifers



U.S. Monthly Federally Inspected Average Dressed Weight Barrows and Gilts



U.S. Monthly Federally Inspected Average Dressed Weight Sows



Reliability of Livestock Slaughter Estimates

Data Sources: Primary data for the commercial livestock slaughter estimates are obtained from electronic reports completed by inspectors from the Food Safety and Inspection Service (FSIS), USDA, which provide daily counts of animals slaughtered in Federally Inspected (FI) plants, in addition to total live and dressed weights. These counts are combined with data from State-administered Non-Federally Inspected (NFI) slaughter plants to derive total commercial slaughter estimates. More than 95 percent of the total U.S. slaughter for any species is under Federal Inspection.

There are approximately 800 livestock slaughter plants in the U.S. operating under Federal Inspection and over 2,000 Non-Federally Inspected (State-inspected or custom-exempt) slaughter plants. Slaughter from State-inspected Talmedge-Aiken plants is included in FI totals (see Types of Plants, page 69). To prevent duplication in reporting between FI and NFI plants and assure all FI plants are included, certificates prepared by FSIS identifying operating status are constantly monitored.

Revision Policy: Number of head slaughtered, live weights, and dressed weights are subject to revision the following month after the monthly release. Annual totals are published in the slaughter summary each March which includes any revisions made to current and previous year's published data. Revisions are generally the result of late reports received from slaughter plants and are usually less than one-half of one percent. No revisions will be made to the previous year's data after the publication of the annual summary in March.

Procedures and Reliability: The livestock slaughter data is obtained electronically on a daily basis and summarized approximately two weeks after the week of slaughter. An edit compares each plant's data with the historical data for that plant. Data are checked for unusual values for head kill, patterns of kill, average weights, and dressing percent, based on each plant's past operating profile. In addition, the edit provides a listing of missing reports for follow-up contact with FSIS. Average live and dressed weights and dressing percentages by State are compared with the previous weeks as an additional check. Fluctuations are frequently the result of plants permanently or temporarily closing and a shift in the species reported.

The FSIS District Veterinary Medical Specialists (DVMS) are contacted by e-mail or telephone for missing or potentially erroneous slaughter data. This assures that plants slaughtering a large number of head or several species are accounted for each week. Any corrections FSIS makes to the slaughter data are included in the summary.

Imputation may be necessary for incomplete reports. The imputation of live and dressed weights is based on the current week reported data of plants of similar size and location. Imputation for live and dressed weight data for cattle and hogs is less than 10 percent and 7 percent, respectively. The imputation for calves and sheep is more frequent and variable. If no data is received electronically or by other means, for plants slaughtering fewer than 50 total head weekly of only one species, data are imputed. The imputation of head for any plant is based on the historical data for that particular plant. The imputation of head slaughtered is rare but when necessary, the imputed head kill for missing plants usually is less than 1 percent of the U.S. head kill totals.

FI data are summarized weekly and accumulated to a monthly total for this release. These weekly totals are published by USDA's Agricultural Marketing Service (AMS) in **Livestock, Meat, Wool Market News**, Weekly Summary, and Statistics and are also available on the NASS website. NFI data are summarized monthly only.

Livestock slaughter estimates are based on a census of operating plants and therefore, have no sampling error. However, they may be subject to errors such as omissions, duplications and mistakes in reporting, recording and processing the data. These errors are minimized through rigid quality controls in the edit and summarization process, and a careful review of all reported data for consistency and reasonableness.

No data are published when an individual plant's data could be divulged. If not published, these data are still included in U.S. and region totals. A review of the data is made annually to determine the publishable data.

Types of Livestock Slaughter Plants

There are generally **four types** of slaughtering plants.

- (1) **Federally Inspected (FI) Plants:** Plants that transport meat interstate must employ federal inspectors to assure compliance with USDA standards. Any State whose commercial plants operate entirely under federal inspection may still have custom-exempt establishments for which NFI estimates are made.
- (2) **Talmedge-Aiken (TA) Plants:** Slaughter plants in which USDA is responsible for inspection. However, federal inspection is carried out by State employees. These plants are considered to be federally inspected.
- (3) **Non-Federally Inspected (NFI) Plants:** Plants which sell and transport only intrastate. State inspectors assure compliance with individual State standards for these NFI plants. Mobile slaughtering units are excluded and are considered farm slaughter.
- (4) **Custom-Exempt Plants:** Plants that do not sell meat but operate on a custom basis only are custom-exempt. The animals and meat are not inspected, but the facilities must meet health standards. These are considered NFI plants and head kill is included in NFI totals.

Terms and Definitions Used for Livestock Slaughter Estimates

Average Live Weight: Excludes post-mortem condemnations.

Commercial Production: Includes slaughter and meat production in federally inspected and other plants, but excludes animals slaughtered on farms.

Dressed Weight: The weight of a chilled animal carcass. Beef with kidney knob in; veal with hide off; lamb and mutton with pluck out; pork with leaf fat and kidneys out, jowls on and head off.

Dressing Percent: Usually expressed as a percentage yield of chilled carcass in relation to the weight of the live animal on hoof. For example, a live hog that weighed 200 pounds on hoof and yielded a carcass weighing 140 pounds would have a dressing percentage of 70.

Food and Meat Inspection: Includes examination, checking, or testing of a carcass and/or meat against established government standards and involves checking the facility for cleanliness, health of animals, or parts of animals and quality of the meat produced.

Number of Head: Includes post-mortem condemnations.

Plant, Slaughter: An establishment where animals are killed and butchered.

Red Meat: Red meat production is the carcass weight after slaughter excluding condemnation and is comprised of beef, veal, pork, and lamb and mutton. The FI red meat production is equal to the total carcass weight after slaughter. The NFI meat production formula is (NFI head kill) X (live weight) X (FI dressing percentage) = NFI red meat production.

Slaughter: Killing and butchering of animals primarily for food.

Slaughter, Farm: Animals slaughtered on farms primarily for home consumption. Excludes custom slaughter for farmers at commercial establishments, but includes mobile slaughtering on farms. These estimates appear only in the annual slaughter release.

Total Live Weight: Excludes post-mortem condemnations.

Wholesome Meat Act: Legislation that specifies that all meat produced for sale in the U.S. must be inspected. Meat that is transported interstate must be inspected in compliance with Federal (USDA) Standards.

Information Contacts

Listed below are the commodity specialists in the Livestock Branch of the National Agricultural Statistics Service to contact for additional information.

Dan Kerestes, Chief, Livestock Branch.....	(202) 720-3570
Shawn Clark, Head, Livestock Section.....	(202) 720-3570
Bruce Boess – Hogs and Pigs.....	(202) 720-3106
Jim Collom – Dairy Products.....	(202) 690-3236
Joe Gaynor – Dairy Products Prices.....	(202) 690-2168
Jason Hardegree – Milk Production and Milk Cows.....	(202) 720-3278
Benita Hodge – Livestock Slaughter.....	(515) 284-4340
Scott Hollis – Sheep and Goats.....	(202) 720-4751
Mike Miller – Cattle, Cattle on Feed.....	(202) 720-3040

Index

	Page
Commercial Slaughter - Number of Head, Total Live Weight, and Average Live Weight, by Month, by State	
Calves	34
Cattle	28
Hogs	40
Sheep and Lambs	46
 Federally Inspected Slaughter	
Average Dressed Weight by Species and Class, U.S.	5
Classification by Head and by Percent, U.S.	12
Number of Plants and Head Slaughtered, by Size Group, U.S.	56
Number of Plants and Head Slaughtered, by Species, by State	52
Number of Slaughter Plants, by State	58
Number of Head Slaughtered by Species and Region	14
Percent of Total Commercial by Species, U.S.	3
Slaughter, by Weeks, U.S.	59
 Red Meat Production - Total Pounds by Type	
Commercial by Month, U.S.	2
Federally Inspected by Month, U.S.	2
Red Meat, by Month, by States	6
 Reliability Statement	68
 Slaughter - Number of Head and Average Live Weight, by Species and Month, U.S.	8

This report is made possible through the cooperative efforts of Agricultural Marketing Service, Food Safety and Inspection Service, and the Agricultural Statistics Board, NASS.

ACCESS TO REPORTS!!

For your convenience, there are several ways to obtain NASS reports, data products, and services:

INTERNET ACCESS

All NASS reports are available free of charge on the worldwide Internet. For access, connect to the Internet and go to the NASS Home Page at: **www.nass.usda.gov**.

E-MAIL SUBSCRIPTION

All NASS reports are available by subscription free of charge direct to your e-mail address. Starting with the NASS Home Page at **www.nass.usda.gov**, under the right navigation, *Receive reports by Email*, click on **National** or **State**. Follow the instructions on the screen.

PRINTED REPORTS OR DATA PRODUCTS

CALL OUR TOLL-FREE ORDER DESK: 800-999-6779 (U.S. and Canada)
Other areas, please call 703-605-6220 FAX: 703-605-6900
(Visa, MasterCard, check, or money order acceptable for payment.)

ASSISTANCE

For **assistance** with general agricultural statistics or further information about NASS or its products or services, contact the **Agricultural Statistics Hotline** at **800-727-9540**, 7:30 a.m. to 4:00 p.m. ET, or e-mail: **nass@nass.usda.gov**.

The U.S. Department of Agriculture (USDA) prohibits discrimination in all its programs and activities on the basis of race, color, national origin, age, disability, and where applicable, sex, marital status, familial status, parental status, religion, sexual orientation, genetic information, political beliefs, reprisal, or because all or part of an individual's income is derived from any public assistance program. (Not all prohibited bases apply to all programs.) Persons with disabilities who require alternative means for communication of program information (Braille, large print, audiotape, etc.) should contact USDA's TARGET Center at (202) 720-2600 (voice and TDD).

To file a complaint of discrimination, write to USDA, Director, Office of Civil Rights, 1400 Independence Avenue, S.W., Washington, D.C. 20250-9410, or call (800) 795-3272 (voice) or (202) 720-6382 (TDD). USDA is an equal opportunity provider and employer.