

Legend





-  Shoreline
-  Restored to upland
-  Restored to lake
-  Facility property line



Figure 3-4. Michigan City Generating Station Alternative 2 restoration areas

0 250 500 1,000 1,500 Feet

Background airphoto is 6/6/2020.



Sheet No.
1

Legend

- CCR surface impoundment
- Colstrip Station site boundary

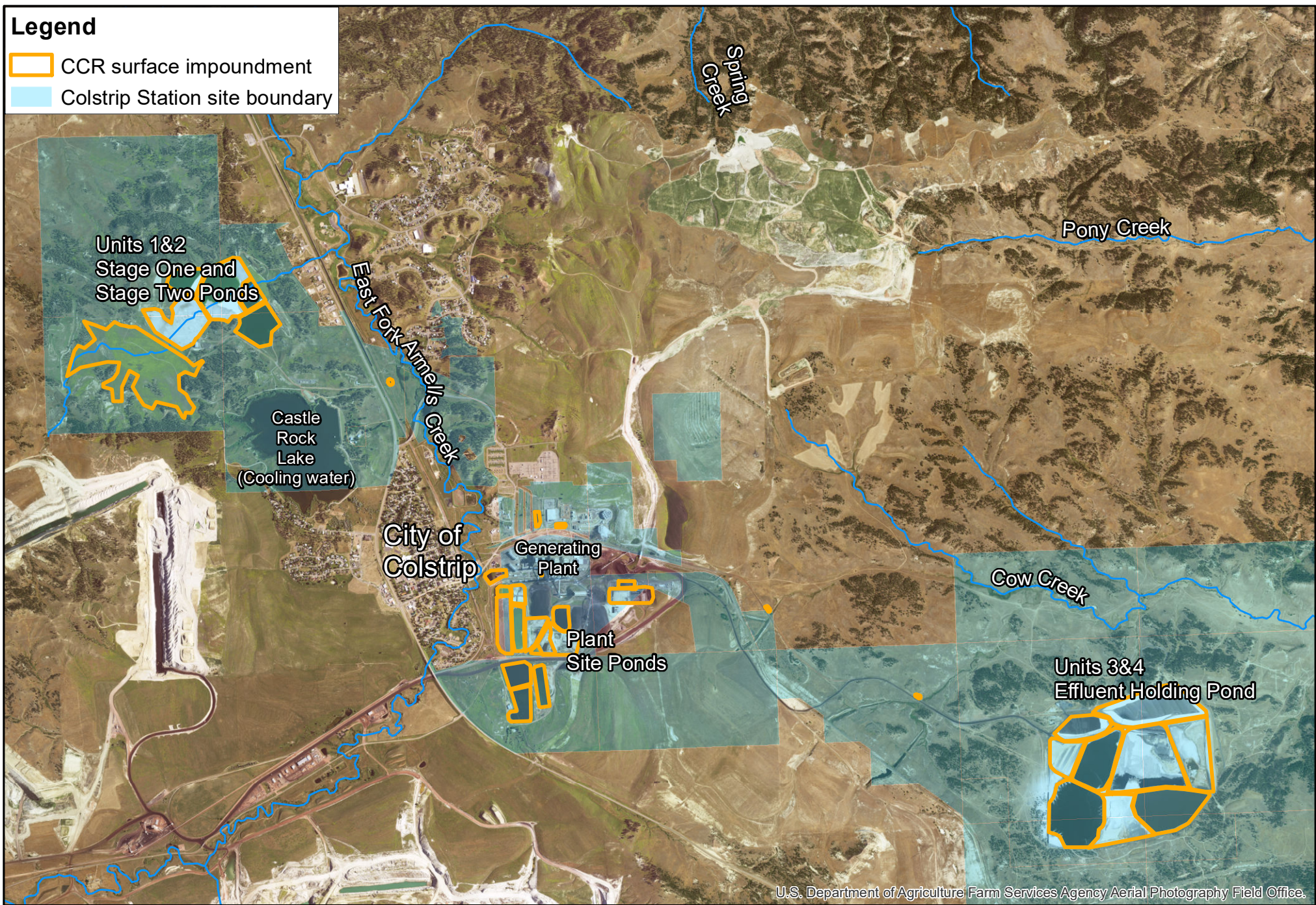


Figure 4-1. Colstrip Steam Electric Plant current site layout

0 0.5 1
Miles



Sheet No.
1

Kirk Engineering & Natural Resources, Inc.

Designed By: Ian Magruder

Checked by: Scott Payne, PhD

Date: 2/5/2021

Legend

Streams (intermittant and perennial)

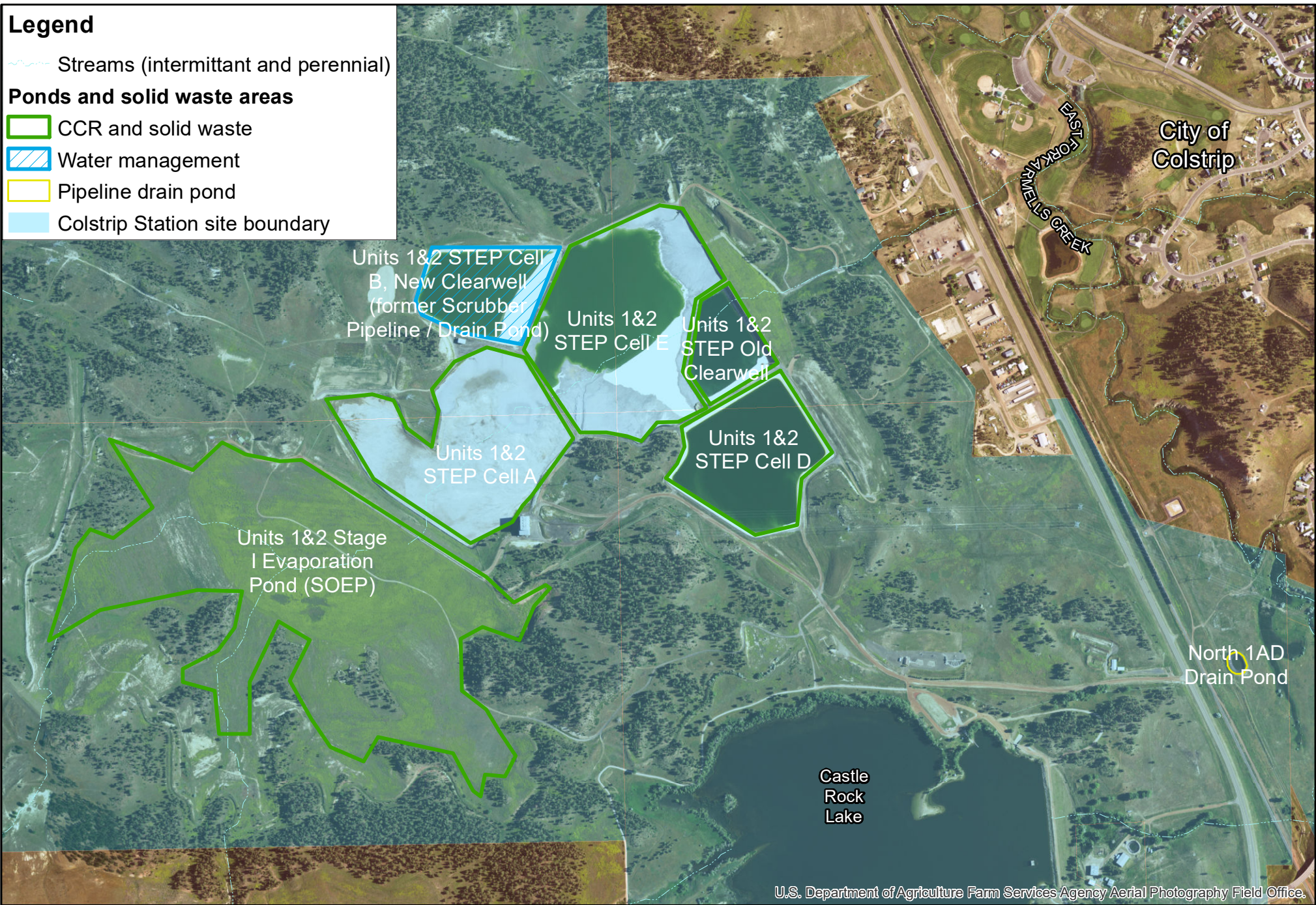
Ponds and solid waste areas

CCR and solid waste

Water management

Pipeline drain pond

Colstrip Station site boundary



U.S. Department of Agriculture Farm Services Agency Aerial Photography Field Office.

Figure 4-2. Colstrip Steam Electric Station Units 1&2 SOEP-STEP Pond Complex

0 500 1,000
Feet

Pond end use is shown. Some CCR ponds are currently used for water management.



Sheet No.
1

Kirk Engineering & Natural Resources, Inc.

Designed By: Ian Magruder

Checked by: Scott Payne, PhD

Date: 2/10/2021

Legend

Streams (intermittant and perennial)

Ponds and solid waste areas

CCR and solid waste

Water management cell over CCR cell

Pipeline drain pond

Colstrip Station site boundary

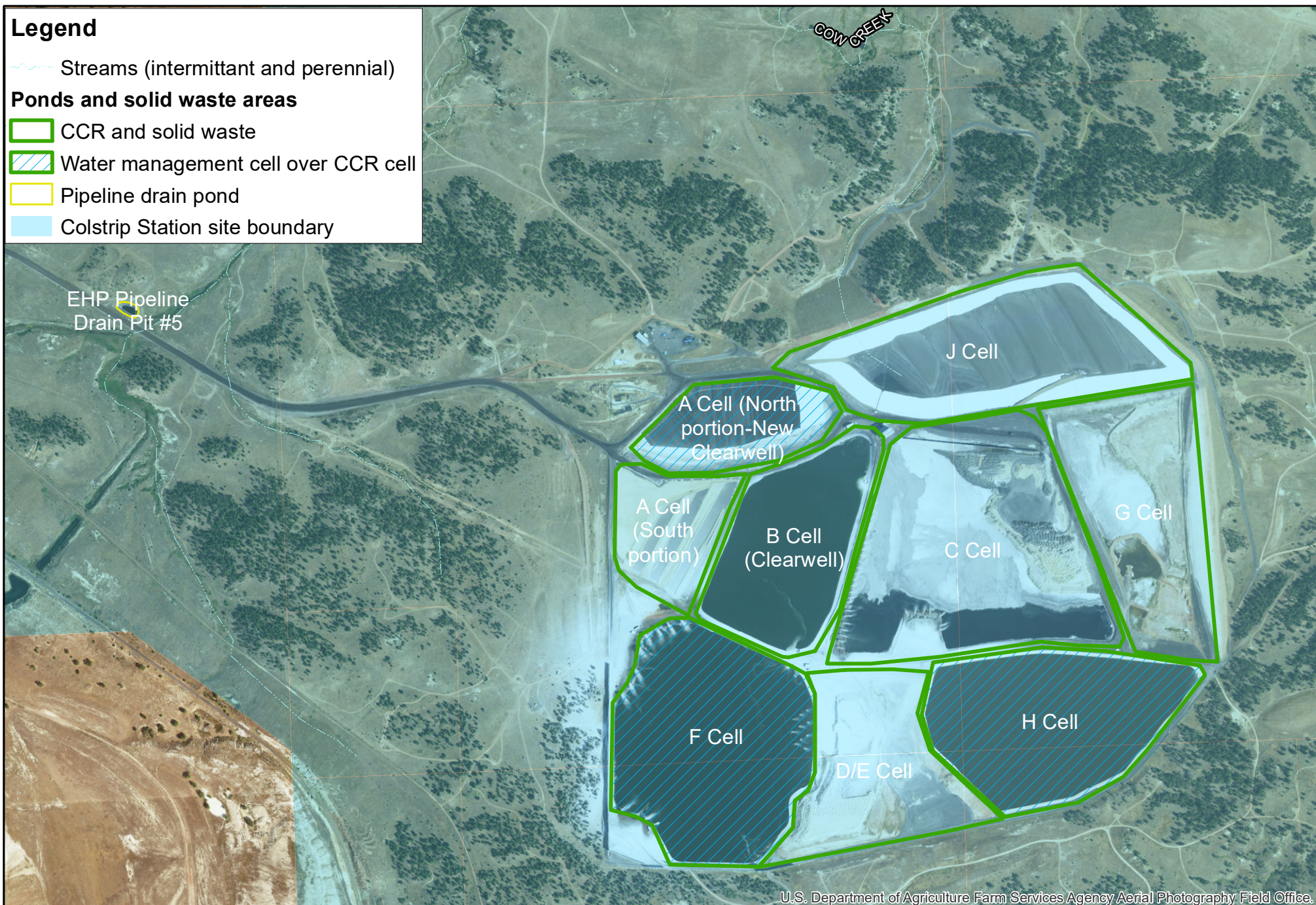


Figure 4-3. Colstrip Steam Electric Station Units 3&4 EHP Pond Complex

0 500 1,000
Feet

Pond end use is shown. Some CCR ponds are currently used for water management.



Sheet No.
1

Kirk Engineering & Natural Resources, Inc.

Designed By: Ian Magruder

Checked by: Scott Payne, PhD

Date: 2/10/2021

Legend

Streams (intermittant and perennial)

Ponds and solid waste areas

CCR and solid waste

Water management

Colstrip Station site boundary



Figure 4-4. Colstrip Steam Electric Plant Site Pond Complex

0 500 1,000
Feet

Pond end use is shown. Some CCR ponds are currently used for water management.



Sheet No.
1

Kirk Engineering & Natural Resources, Inc.

Designed By: Ian Magruder

Checked by: Scott Payne, PhD

Date: 2/10/2021