

Attachment 2. Large format figures

Section 2

Figure 2-1. Grainger Generating Station prior to decommissioning and CCR removal

Section 3

Figure 3-1. Michigan City Generating Station current site layout

Figure 3-2. Michigan City Generating Station in 1952

Figure 3-3. Michigan City Generating Station in 1961

Figure 3-4. Michigan City Generating Station Alternative 2 restoration areas

Section 4

Figure 4-1. Colstrip Steam Electric Plant current site layout

Figure 4-2. Colstrip Steam Electric Station Units 1&2 SOEP-STEP Pond Complex

Figure 4-3. Colstrip Steam Electric Station Units 3&4 EHP Pond Complex

Figure 4-4. Colstrip Steam Electric Plant Site Pond Complex

Legend

 CCR surface impoundment



Figure 2-1. Grainger Generating Station prior to decommissioning and CCR removal

0 250 500 1,000 1,500
Feet

Airphoto background is 2005.



Sheet No.
1



Kirk Engineering & Natural Resources, Inc.

Designed By: Ian Magruder

Checked by: Scott Payne, PhD

Date: 1/28/2021

Legend

-  CCR and water management pond
-  Facility property line

Lake Michigan

Trail Creek

Generating plant

Final Pond

Boiler Slag Pond
Secondary Settling Pond 2

Primary Settling Pond 2

Secondary Settling Pond 1
Coal pile

Primary Settling Pond 1
Cooling tower

Michigan City

Figure 3-1. Michigan City Generating Station current site layout

0 250 500 1,000 1,500
Feet

Background airphoto is 6/6/2020.



Sheet No.
1

Kirk Engineering & Natural Resources, Inc.

Designed By: Ian Magruder

Checked by: Scott Payne, PhD

Date: 1/28/2021



Figure 3-2. Michigan City Generating Station in 1952

0 250 500 1,000 1,500
 Feet

Background airphoto is 3/29/1952



Sheet No.
1

Kirk Engineering & Natural Resources, Inc.

Designed By: Ian Magruder

Checked by: Scott Payne, PhD

Date: 1/28/2021

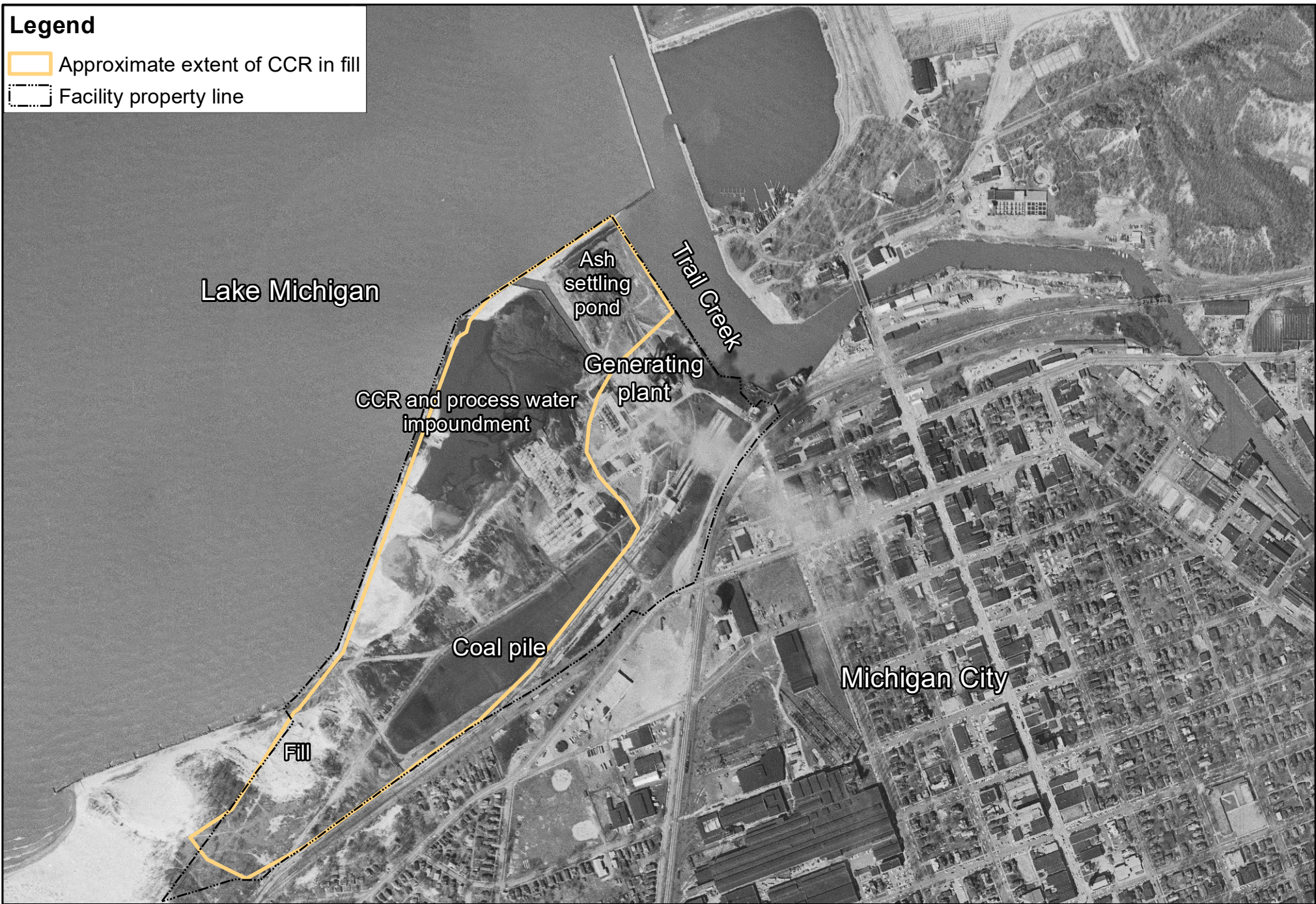


Figure 3-3. Michigan City Generating Station in 1961

0 250 500 1,000 1,500
Feet

Background airphoto is 3/29/1961
Extent of CCR in fill determined from boring logs
in RCRA Facility Investigation (Golder 2018, Wood 2018b)



Sheet No.
1

KirK Engineering & Natural Resources, Inc.

Designed By: Ian Magruder

Checked by: Scott Payne, PhD

Date: 1/28/2021