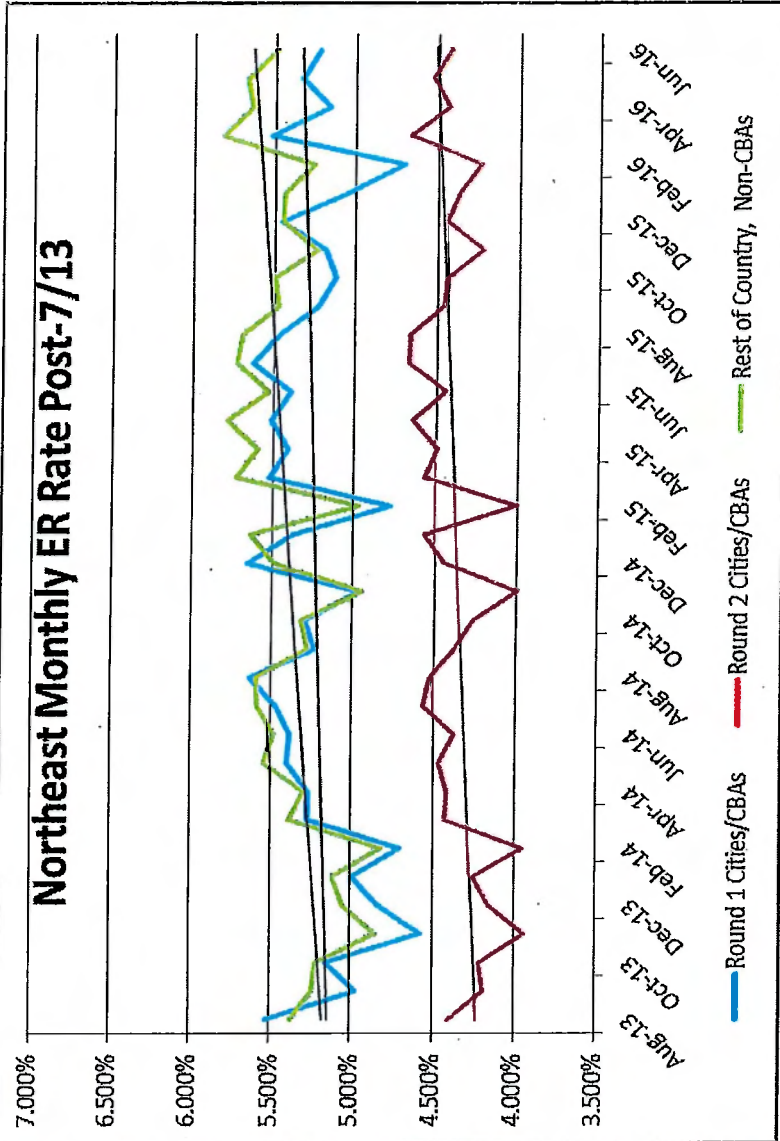


**Diabetes Access Group Emergency Utilization  
(CMS Health Status Monitoring Data)**

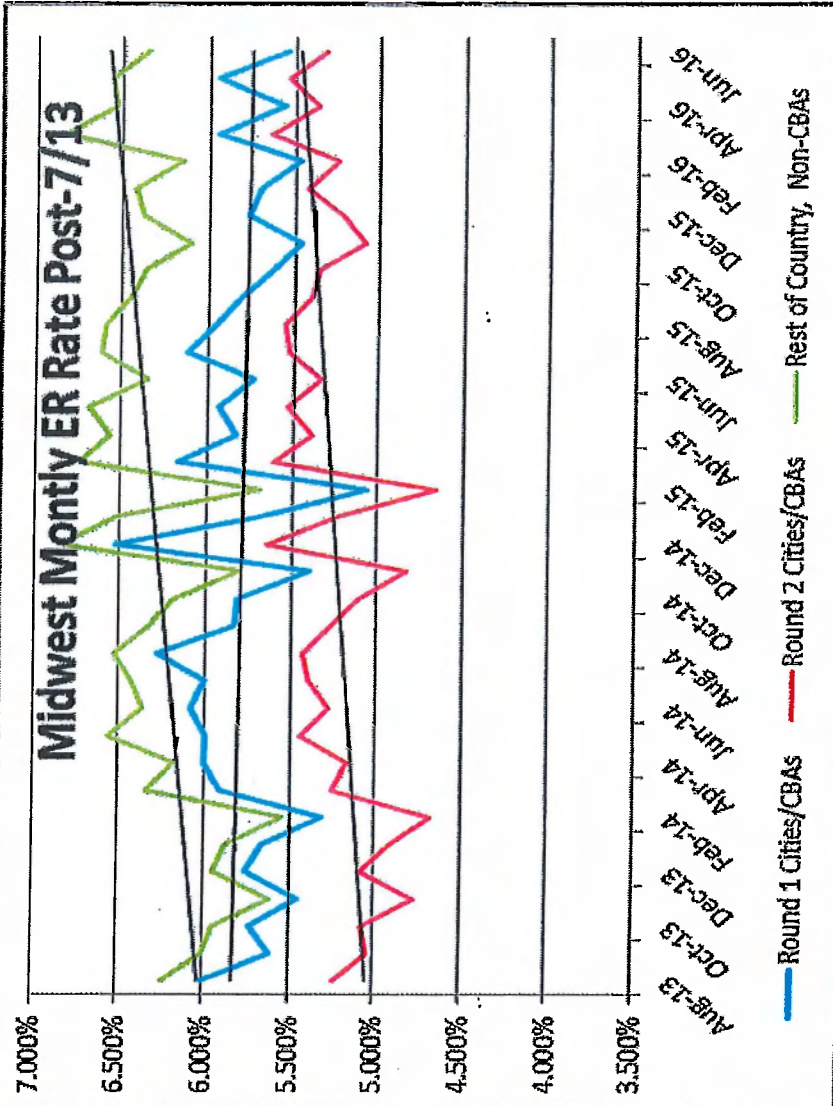
**Since National DTS Program Implementation (Post 7/1/13)**

Rest of Country, Non-CBAs	Round 1 Cities/CBAs	Round 2 Cities/CBAs	Rest of Country, Non-CBAs
Aug-13	5.518%	4.397%	5.367%
Sep-13	4.969%	4.185%	5.236%
Oct-13	5.152%	4.206%	5.212%
Nov-13	4.570%	3.939%	4.842%
Dec-13	4.827%	4.147%	5.047%
Jan-14	4.987%	4.252%	5.111%
Feb-14	4.695%	3.951%	4.810%
Mar-14	5.266%	4.420%	5.381%
Apr-14	5.267%	4.408%	5.291%
May-14	5.401%	4.458%	5.545%
Jun-14	5.387%	4.370%	5.484%
Jul-14	5.470%	4.557%	5.589%
Aug-14	5.634%	4.518%	5.594%
Sep-14	5.232%	4.368%	5.274%
Oct-14	5.305%	4.253%	5.322%
Nov-14	4.965%	3.993%	4.946%
Dec-14	5.656%	4.433%	5.492%
Jan-15	5.371%	4.559%	5.637%
Feb-15	4.771%	4.001%	4.964%
Mar-15	5.521%	4.555%	5.729%
Apr-15	5.411%	4.486%	5.593%
May-15	5.516%	4.629%	5.786%
Jun-15	5.388%	4.435%	5.533%
Jul-15	5.628%	4.660%	5.730%
Aug-15	5.467%	4.645%	5.697%
Sep-15	5.229%	4.456%	5.475%
Oct-15	5.124%	4.425%	5.501%
Nov-15	5.183%	4.212%	5.240%
Dec-15	5.460%	4.439%	5.450%
Jan-16	5.047%	4.358%	5.441%
Feb-16	4.698%	4.228%	5.257%
Mar-16	5.522%	4.658%	5.821%
Apr-16	5.167%	4.430%	5.641%
May-16	5.335%	4.526%	5.677%
Jun-16	5.228%	4.416%	5.496%
<b>Last 12 mos</b>	<b>68.475%</b>	<b>57.889%</b>	<b>71.958%</b>
<b>Increase</b>	<b>1.592%</b>	<b>3.229%</b>	<b>3.634%</b>

**Northeast Monthly ER Rate Post-7/13**

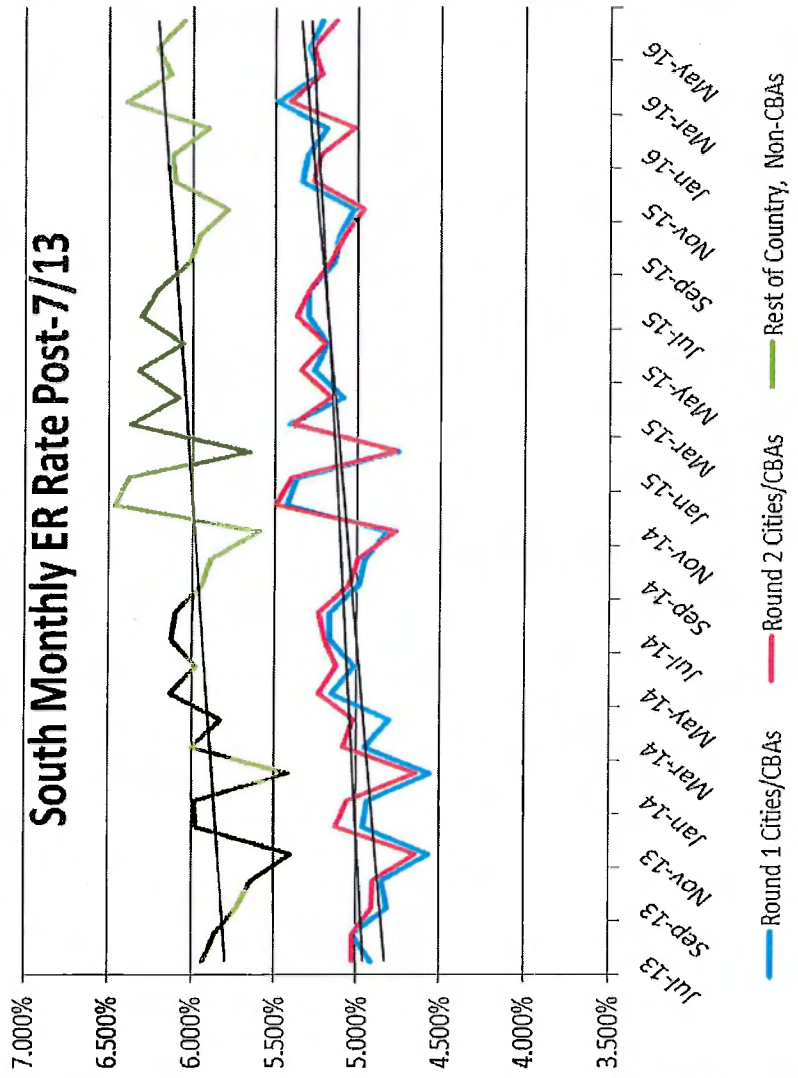


	Round 1 Cities/CBAs	Round 2 Cities/CBAs	Rest of Country, Non-CBAs
Midwest			
Aug-13	6.002%	5.234%	6.234%
Sep-13	5.611%	5.039%	6.002%
Oct-13	5.726%	5.071%	5.943%
Nov-13	5.449%	4.771%	5.611%
Dec-13	5.752%	5.085%	5.940%
Jan-14	5.663%	4.916%	5.873%
Feb-14	5.309%	4.676%	5.545%
Mar-14	5.909%	5.256%	6.339%
Apr-14	6.001%	5.171%	6.173%
May-14	5.994%	5.440%	6.557%
Jun-14	6.081%	5.278%	6.364%
Jul-14	6.006%	5.397%	6.434%
Aug-14	6.278%	5.435%	6.519%
Sep-14	5.829%	5.268%	6.325%
Oct-14	5.818%	5.110%	6.178%
Nov-14	5.396%	4.828%	5.805%
Dec-14	6.525%	5.649%	6.846%
Jan-15	5.680%	5.234%	6.515%
Feb-15	5.066%	4.656%	5.687%
Mar-15	6.165%	5.609%	6.740%
Apr-15	5.831%	5.393%	6.567%
May-15	5.934%	5.535%	6.684%
Jun-15	5.732%	5.340%	6.348%
Jul-15	6.114%	5.529%	6.621%
Aug-15	5.953%	5.555%	6.595%
Sep-15	5.806%	5.398%	6.448%
Oct-15	5.616%	5.356%	6.358%
Nov-15	5.458%	5.083%	6.094%
Dec-15	5.766%	5.222%	6.381%
Jan-16	5.699%	5.421%	6.422%
Feb-16	5.468%	5.247%	6.151%
Mar-16	5.947%	5.634%	6.831%
Apr-16	5.557%	5.364%	6.528%
May-16	5.947%	5.535%	6.558%
Jun-16	5.545%	5.323%	6.356%
Last 12 mos	74.607%	70.007%	83.690%
Increase	0.642%	5.114%	5.259%

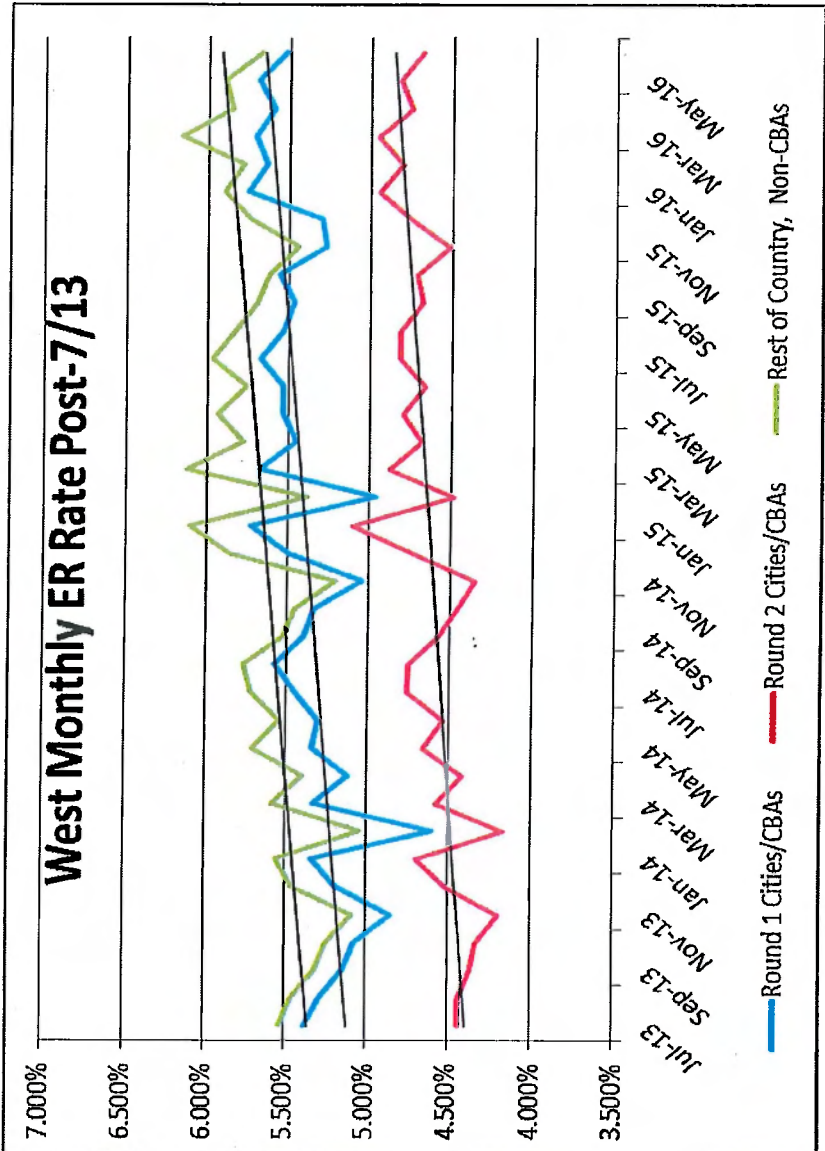


South	Round 1 Cities/CBAs	Round 2 Cities/CBAs	Rest of Country, Non-CBAs
Jul-13	4.915%	5.023%	5.928%
Aug-13	5.022%	5.025%	5.864%
Sep-13	4.819%	4.914%	5.726%
Oct-13	4.851%	4.900%	5.643%
Nov-13	4.573%	4.651%	5.402%
Dec-13	4.961%	5.127%	5.978%
Jan-14	4.934%	5.064%	5.980%
Feb-14	4.559%	4.645%	5.421%
Mar-14	4.955%	5.089%	6.001%
Apr-14	4.808%	5.025%	5.824%
May-14	5.154%	5.239%	6.131%
Jun-14	5.018%	5.128%	5.975%
Jul-14	5.165%	5.206%	6.124%
Aug-14	5.169%	5.239%	6.095%
Sep-14	4.995%	5.048%	5.936%
Oct-14	4.952%	5.003%	5.883%
Nov-14	4.814%	4.771%	5.597%
Dec-14	5.427%	5.503%	6.459%
Jan-15	5.368%	5.407%	6.368%
Feb-15	4.757%	4.769%	5.661%
Mar-15	5.414%	5.396%	6.357%
Apr-15	5.087%	5.166%	6.076%
May-15	5.262%	5.352%	6.320%
Jun-15	5.185%	5.205%	6.054%
Jul-15	5.300%	5.375%	6.299%
Aug-15	5.299%	5.297%	6.204%
Sep-15	5.150%	5.176%	6.021%
Oct-15	5.113%	5.091%	5.957%
Nov-15	5.029%	4.975%	5.789%
Dec-15	5.344%	5.273%	6.110%
Jan-16	5.311%	5.232%	6.122%
Feb-16	5.196%	5.025%	5.900%
Mar-16	5.489%	5.423%	6.397%
Apr-16	5.234%	5.231%	6.133%
May-16	5.300%	5.279%	6.214%
Jun-16	5.217%	5.137%	6.050%
<b>Last 12 mos</b>	<b>68.168%</b>	<b>67.720%</b>	<b>79.249%</b>
<b>Increase</b>	<b>5.951%</b>	<b>3.649%</b>	<b>3.858%</b>

**South Monthly ER Rate Post-7/13**



West	Round 1 Cities/CBAs	Round 2 Cities/CBAs	Rest of Country, Non-CBAs
Jul-13	5.378%	4.429%	5.528%
Aug-13	5.293%	4.436%	5.460%
Sep-13	5.145%	4.362%	5.320%
Oct-13	5.071%	4.328%	5.244%
Nov-13	4.854%	4.192%	5.085%
Dec-13	5.191%	4.511%	5.457%
Jan-14	5.343%	4.689%	5.555%
Feb-14	4.606%	4.169%	5.038%
Mar-14	5.330%	4.575%	5.583%
Apr-14	5.118%	4.415%	5.395%
May-14	5.346%	4.656%	5.704%
Jun-14	5.311%	4.529%	5.543%
Jul-14	5.449%	4.751%	5.713%
Aug-14	5.573%	4.741%	5.766%
Sep-14	5.396%	4.565%	5.521%
Oct-14	5.337%	4.454%	5.449%
Nov-14	5.038%	4.339%	5.199%
Dec-14	5.493%	4.718%	5.855%
Jan-15	5.723%	5.090%	6.096%
Feb-15	4.960%	4.478%	5.375%
Mar-15	5.669%	4.870%	6.116%
Apr-15	5.450%	4.675%	5.767%
May-15	5.532%	4.785%	5.932%
Jun-15	5.529%	4.657%	5.756%
Jul-15	5.670%	4.811%	5.967%
Aug-15	5.533%	4.808%	5.821%
Sep-15	5.471%	4.671%	5.692%
Oct-15	5.561%	4.708%	5.619%
Nov-15	5.274%	4.515%	5.442%
Dec-15	5.296%	4.745%	5.736%
Jan-16	5.753%	4.939%	5.896%
Feb-16	5.633%	4.800%	5.779%
Mar-16	5.710%	4.954%	6.159%
Apr-16	5.591%	4.746%	5.849%
May-16	5.688%	4.816%	5.892%
Jun-16	5.519%	4.686%	5.677%
<b>Last 12 mos</b>	<b>72.227%</b>	<b>61.856%</b>	<b>75.285%</b>
<b>Increase</b>	<b>4.597%</b>	<b>5.476%</b>	<b>5.234%</b>



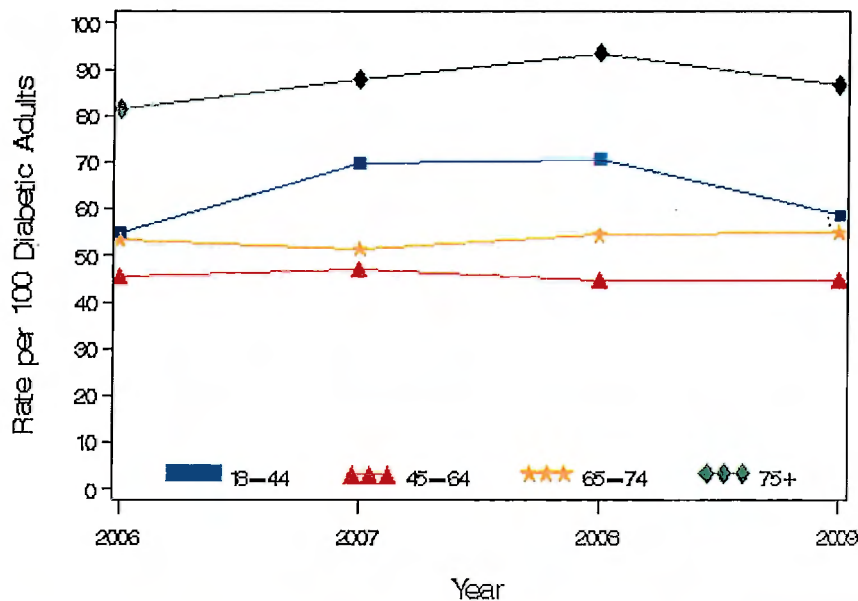
## Supplement to Appendix 4



CENTERS FOR DISEASE  
CONTROL AND PREVENTION

### Emergency Department Visit Rates for Diabetes as Any-Listed Diagnosis per 100 Diabetic Adults Aged 18 Years or Older, by Age, United States, 2006-2009

From 2006 to 2009, Emergency Department (ED) visit rates for diabetes as any-listed diagnosis were highest among persons aged 75 years or older and lowest among those aged 45-64 years. In 2006 and in 2009, ED visit rates were similar between those aged 18-44 years and 65-74 years. During the period, none of the age groups showed obvious trends in ED visit rates.



Year	Age Group							
	18-44		45-64		65-74		75+	
	Rate	Std Error	Rate	Std Error	Rate	Std Error	Rate	Std Error
<b>2006</b>	54.8	4.2	45.2	2.4	53.2	3.3	81.5	5.6
<b>2007</b>	70.0	6.2	47.1	2.4	51.4	3.1	88.0	6.1
<b>2008</b>	70.7	6.4	44.6	2.3	54.3	3.4	93.6	6.4
<b>2009</b>	58.7	4.4	44.6	2.2	54.8	3.2	86.6	5.5