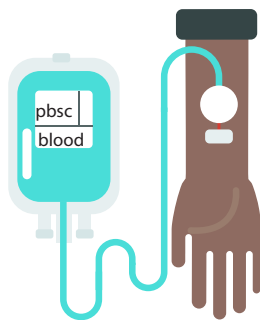




# HEMEOS

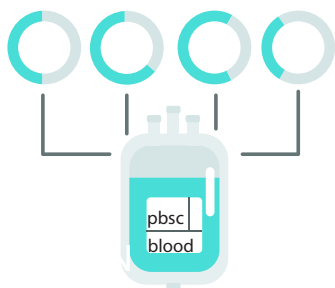


More African Americans are needed to save African Americans.

## THE FACTS

# OVER 1,000

There are over 1,000 deaths per year due to the lack of suitable peripheral blood stem cells (PBSC). Blood stem cell donations treat Leukemia, Lymphoma, Sickle Cell Disease and over 70 other diseases.

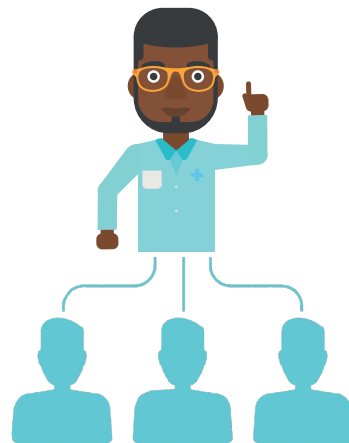


## THE PROBLEM

# ONLY 7 PERCENT

Donor patient matches are very specific genetic matches that usually occur within the same ethnic background. Only 7 percent of donors are African American.

## THE STATS - FINDING DONORS



1 in 3 African Americans can't find a donor

## THE STATS - RACE/ETHNICITY

PROBABILITY OF FINDING A DONOR BY RACE



WHITE

93%

HISPANIC

72%

ASIAN

73%

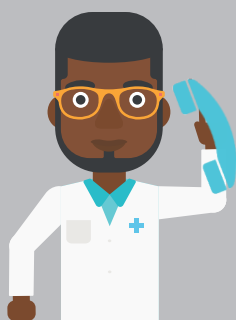
AFRICAN AMERICANS

66%

## HOW CAN YOU HELP?



SWAB



CONTACT



MEDICAL WORKUP

PROTEIN SHOT



COLLECTION

