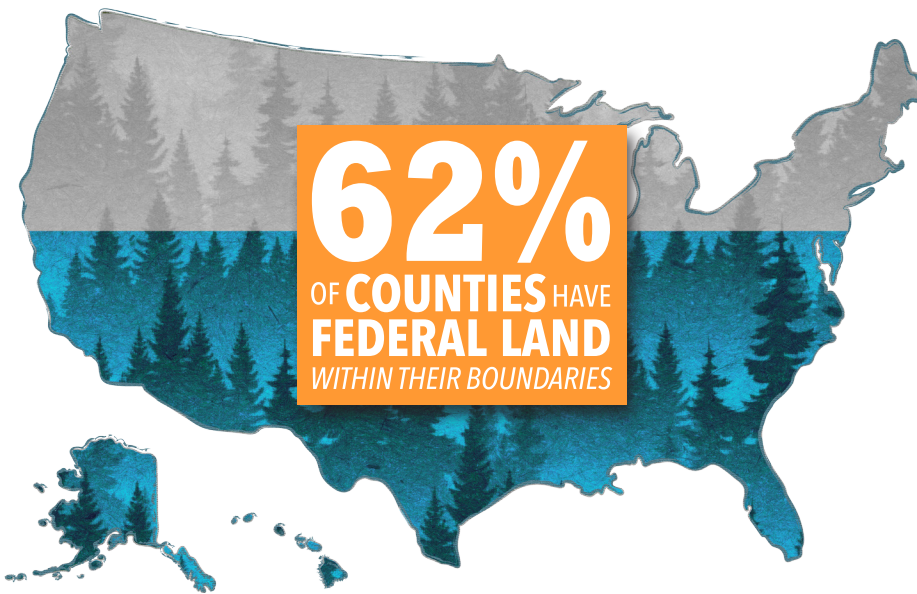


# 2014 PAYMENT IN LIEU OF TAXES (PILT)

## U.S. COUNTIES AND PILT

PILT RECEIVED, FY 2014:	PERCENT OF COUNTIES WITH FEDERAL LAND:	MEDIAN PROPERTY TAX GENERATED PER TAXABLE ACRE:	MEDIAN PILT AMOUNT PER FEDERAL ACRE:
<b>\$423 M</b>	<b>61.9%</b>	<b>\$13.55</b>	<b>\$2.58</b>

## FEDERAL LANDS, LOCAL COMMUNITIES



- **61.9% of counties have federal land** within their boundaries. Even though they are not able to collect property taxes on federal land, county governments must still provide essential services for their residents and those who visit these public lands each year. Such services include road and bridge maintenance, law enforcement, search and rescue, emergency medical, fire protection, solid waste disposal and environmental compliance.
- Our ask: **Counties urge Congress to provide full funding for PILT in FY 2015 and to support a sustainable long-term approach to financing essential local services in America's public lands counties.**

NOTES: NACo Analysis of Department of the Interior data and Census Bureau Census of Governments data.

### PILT FUNDING CRITICAL FOR SERVICES INCLUDING:

						
ROAD AND BRIDGE MAINTENANCE	LAW ENFORCEMENT	SEARCH AND RESCUE	EMERGENCY MEDICAL	FIRE PROTECTION	SOLID WASTE DISPOSAL	ENVIRONMENTAL COMPLIANCE